

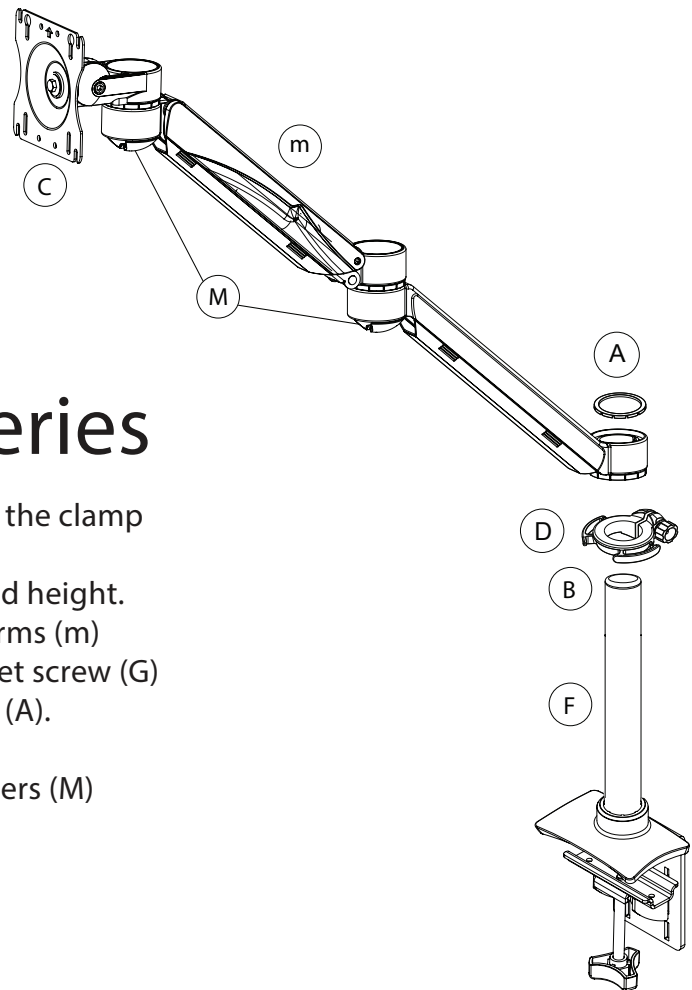
Avia Pole-mount Monitor Arm

Assembly Instructions

Page 1 of 3

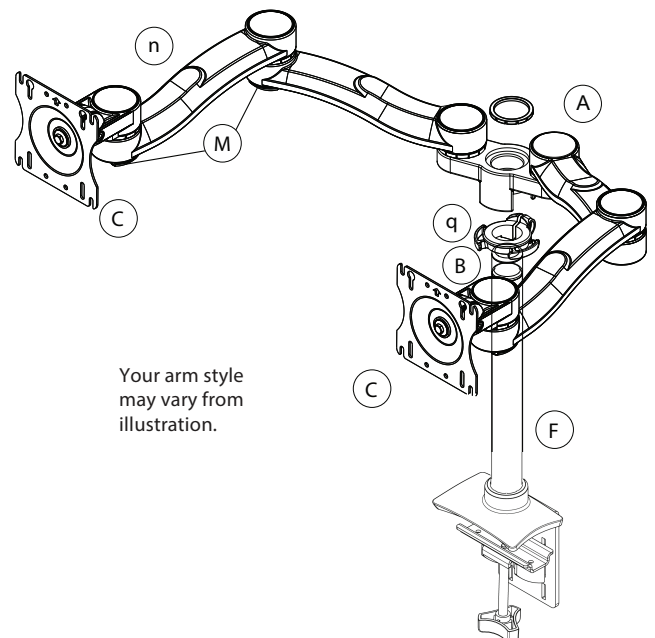
7823H & 7818H Series

1. Mount pole (F) to work surface using either the clamp or grommet (see sidebar).
2. Assemble support ring (D) to pole at desired height.
3. Mount arm assembly (E) or dual hub with arms (m) to pole (set to correct height) and tighten set screw (G) to for correct tension, followed by trim ring (A).
4. For additional screens, repeat steps 2 to 5.
5. Insert monitor cables through cable managers (M) and support ring tabs (D).
6. Mount monitor onto knuckle (C).



Dual Hub Models

1. Mount pole (F) to work surface using either the clamp or grommet (see sidebar).
2. Assemble support ring (q). to pole at desired height.
3. Mount Dual Hub assembly (n) to pole (set to correct height) making sure the front plate slides between the cable managers on the support ring (q) followed by trim ring (A).
4. Tighten set screws at rear of hub.
5. For optional third screen, assemble support ring (D) to pole at desired height. Mount monitor assembly (C) to pole (set to correct height) followed by trim ring (A).
6. For additional screens, repeat steps 2 to 5.*
7. Insert monitor cables through cable managers (M) and support ring tabs (D) and/or dual hub support ring (q).
8. Mount monitor onto knuckle (C).



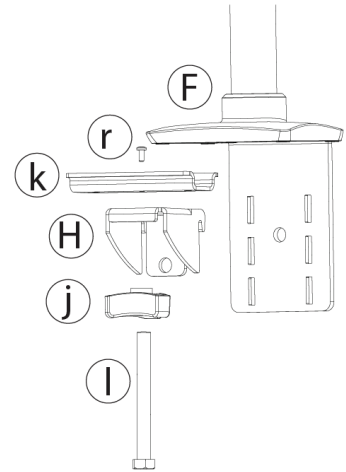
*20 lb. maximum screen weight per monitor mount.

Avia Pole-mount Monitor Arm Assembly Instructions

Page 2 of 3

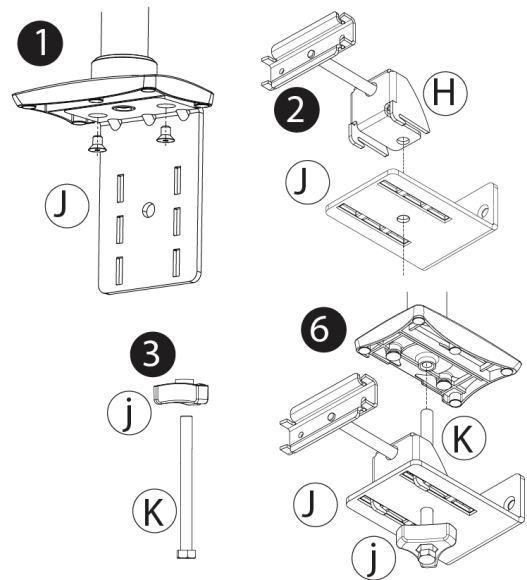
Mounting pole to work surface using the Clamp Mounting System:

1. Slide knob (j) on to bolt (l) (short 3/8" bolt), ensuring the bolt head is securely engaged into the knob.
2. Screw bolt (l) in to the lower clamp bracket (H) and using clamp pad screw (r) attach clamp (k) to the end of the bolt (l).
3. Hook lower clamp bracket (H) in to one of the top 2 (of the 3) positions provided.
4. Position clamp bracket and pole assembly (F) onto work surface in desired location.
5. Using knob (j) tighten securely.
6. For applications requiring increased tightness, slide knob up bolt to expose the bolt head and using a 9/16" wrench tighten the bolt to 90 in-lbs.
Caution: DO NOT OVERTIGHTEN



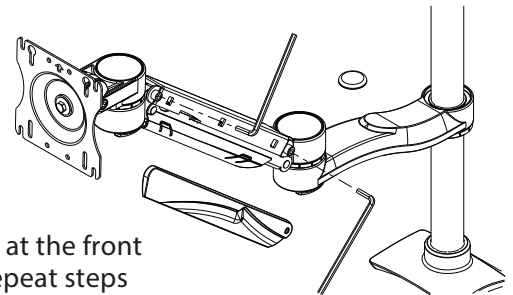
Mounting pole to work surface using the Grommet Mounting System:

1. Use Phillips screw driver to remove the screws which attach the upper clamp bracket (J) to pole base.
2. Assemble lower clamp bracket (H) to furthest slots on upper clamp bracket (J) to align clearance holes.
3. Slide knob (j) on to bolt (K) (long 3/8" bolt).
4. Lay monitor cables through grommet holes in the work surface.
5. Align pole on work surface.
6. Install bolt (K) through the clearance holes on clamp bracket (J) insert the threaded end through the grommet and into the pole base, using knob (j) to tighten securely.
7. For applications requiring increased tightness, remove knob from bolt head and using a 9/16" wrench tighten the bolt to 90 in-lbs. Caution: DO NOT OVERTIGHTEN



Adjusting the Height Adjustable Segment:

1. Remove the plastic shroud on the side of the height adjustable segment.
2. With the monitor mounted to the arm, move the monitor through the height range; Ensure the arm will hold the monitor in the position you placed it.
3. If the monitor drops or rebounds upward, adjust the tension screws at the front and back of the arm segment as shown using the 3/16" Allen key. Repeat steps until the monitor is counterbalanced.

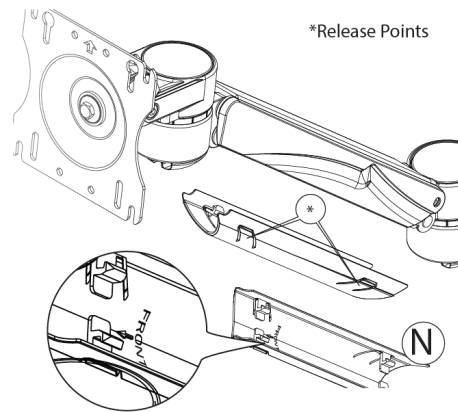


Avia Pole-mount Monitor Arm Assembly Instructions

Page 3 of 3

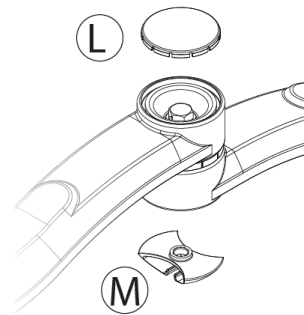
Using the Height Adjustable Cable Manager:

1. Remove cable manager (N) by pinching at release points.
2. Lay cables in cable manager.
3. Snap cable manager back into place. Note text indication "FRONT" inside cable manager.



Adjusting the torque:

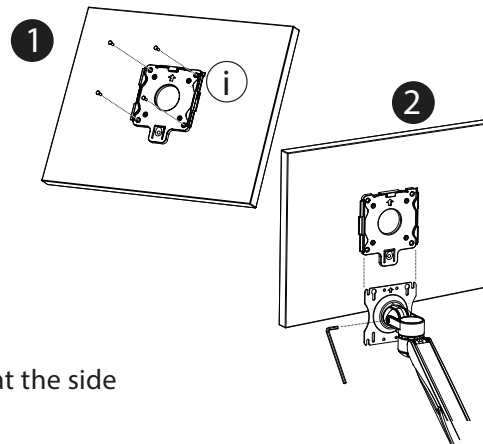
1. Remove joint cap (L) from the top of the joint using a small flat head screw driver.
2. Unscrew the cable manager (M) from the bottom of the joint.
3. Holding the bolt in the top of the joint with a 9/16" socket, use a second 9/16" socket on the nut in the bottom of the joint to adjust the torque setting.
4. Replace cap and reassemble cable manager.



Mounting the Monitor:

Quick Connect Bracket:

1. Affix Quick Connect Bracket to screen, make sure arrow is pointing up.
2. Make sure faceplate arrow is also pointing up then slide monitor mount assembly onto faceplate until bottom tab clicks onto faceplate.
3. To remove the monitor, depress tab and remove from monitor mount assembly.



Adjusting the Tilt Tension:

If the monitor drops or is too tight, adjust the tension screw at the side of the head as shown using the 3/16" Allen key.

ERGOADVANTAGE™
BY APPLIED ERGONOMICS

3401 Madison Street
Skokie, IL 60076
(847) 679-5148
sales@appliedergonomics.com