

# ERGO ADVANTAGE™

BY APPLIED ERGONOMICS

## *Height Adjustable Table Frame Kit*

Information Package



OEM  
INFORMATION  
PACKAGE

# Key Features and Benefits

Features	Benefits
Height adjustable range from 24" to 50"	With a 26" height adjustment range the Allegretto™ allows users to alternate between seated and standing positions, thereby reducing backaches, pains, stress, tension, and improves circulation.
Standard 'C' leg configuration	Increased under table space gives customers the option to customize their tables even further with ergonomic key board trays to create a complete ergonomic solution.
Height adjustment speed of 1.6 inches/second.	Tables can quickly be adjusted from one height to another in a short period of time.
Less than 58 dB of noise when in operation	This low noise level ensures that the operation of the table does not inconvenience others in the office environment.
Standby power consumption of .06 W	The table motors only use a combined .06W of standby power when not in use thus lowering the total cost of ownership for end users.
Supports up to 264 lbs.	Exceeding industry standards, the Allegretto™ can accommodate demanding weight applications.
An updated contemporary look	The Allegretto™ has been designed to provide a contemporary modern design feel to any office environment.
Frame ships flat packed	Every kit is shipped flat packed and is expandable with hinged legs that snap into position for easy assembly. Final assembly takes less than 30 minutes.
Adjustable width from 46" to 76"	The frame kits can easily be adjusted to fit different table top widths (46"-90") making purchasing much easier for the customer.
All the required components come in one compact shipping box.	Customers just need to order one part number. All required components are included. (excluding the top)
Motor comes with 'Anti-Collision' protection	To improve end user safety the leg motors have Anti-Collision protection that will stop and reverse the travel of the table when the table collides with a fixed object during operation.
5 Year Mechanical and 2 Year Electrical Warranty	The Allegretto™ has been designed and tested beyond industry standards to ensure a long service free life.



# Packaging

The Allegretto™ will be individually packaged as a pre-assembled product. The box dimensions for a two legged version are 49" x 9" x 12" and weighs 82 lbs. The box dimensions for the three legged version are 57" x 10" x 12" and weighs 117 lbs.

# BAA/TAA Compliance

The Allegretto™ Height Adjustable Table Kits are classified as TAA or BAA compliant.

## LEED Recyclability Calculations - Three Leg Table Kit

	Weight in lbs.	Recycled Content %
Total weight of kit (lbs.)	115.43	-
Recycled Content Total (lbs.)	67.6	59
Post Industrial (lbs.)	47.2	41
Post Consumer (lbs.)	20.43	18
<b>Recyclability of Product</b>	<b>114.23 lbs.</b>	<b>98.96 %</b>

## LEED Recyclability Calculations - Two Leg Table Kit

	Weight in lbs.	Recycled Content %
Total weight of kit (lbs.)	80.78	-
Recycled Content Total (lbs.)	47	58
Post Industrial (lbs.)	32.9	41
Post Consumer (lbs.)	14.16	18
<b>Recyclability of Product</b>	<b>79.93 lbs.</b>	<b>98.96 %</b>

## LEED Credit Ratings

LEED-CI Credit	Product
MANUFACTURING & RESOURCES	
MR Credit 4.1 – Required Recycled Content, 10%	Allegretto™
MR Credit 4.2 – Required Recycled Content, 20%	Allegretto™
INNOVATION & DESIGN PROCESS	
Credit 1.1 – 1.4 Innovation in Design Ergonomic products could be credited as part of an implemented Ergonomic Strategy	Allegretto™

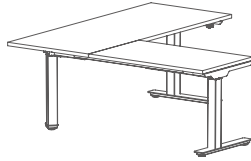


# Installation Manual: Three Leg Kit

## Installation Instructions

### STEP 21

Flip the table over. Reset the 4-Position Memory Controller before use.



## 4-Position Memory Control

### RESET \*\*\*PERFORM RESET BEFORE 1ST USE\*\*\*

1. Press both **▲** and **▼** buttons at the same time until the table is in its lowest position.
2. The display on the height adjustment controller will show "000" while conducting reset.
3. When height adjustment controller beeps, the buttons can be released and reset is complete.



**NOTE:** If anti-collision feature is activated by table contacting an immovable object, the reset function will need to be performed.

### NORMAL OPERATION

1. Press any button and the display shows current height in inches (in).
2. Press **▲** or **▼** button to adjust the height.
3. When no button has been pressed for 30 seconds, the system goes to <math><0.1 W</math> standby mode, and the display turns off. Press any button to wake the system and display the current base height.

### CHANGING STARTING HEIGHT

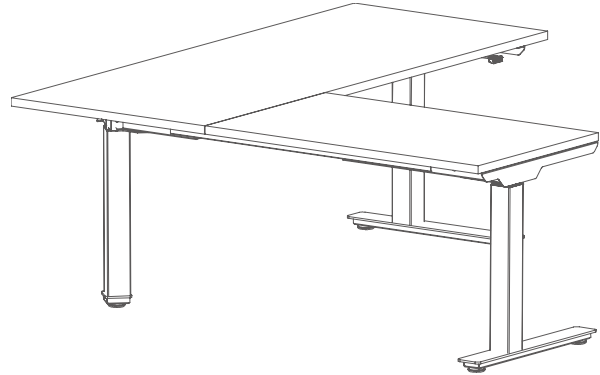
1. The default starting height is approximately 25".
2. To adjust the starting height, press **▲** button until reaching lowest position. At the lowest position, press **▼** button again for 5 seconds until display starts flashing for 10 seconds.
3. During this time, press **▲** or **▼** buttons to adjust height to preferred starting position, and then press **▲** and **▼** buttons together for 3 seconds to store this position.
4. Display stops flashing and the new starting height is shown in the display.

### SETTING & USING MEMORY PRESET POSITIONS

1. Operate the desk to preferred height.
2. Press any of **1**, **2**, **3**, **4** together with **▲** or **▼** for 2 seconds to store the current height. Display shows P1/P2/P3/P4 when the position has been stored.
3. To return table/desk to a stored position, hold the memory preset button **1**, **2**, **3**, **4** until the desk reaches the stored height.
4. Memory presets can be overwritten with a new position at any time.

## INSTALLATION MANUAL

## HEIGHT ADJUSTABLE TABLE: THREE LEG KIT



## Contents

Part List / Hardware List and Tools Required / Warnings/Disclaimer ..... 2  
 Installation Instructions - STEP 1 - STEP 21 ..... 2 - 8  
 4-Position Memory Control ..... 8

## Part List

<b>A</b> Leg 3 qty.	<b>B</b> Feet 2 qty.	<b>C</b> Mid Post Base 1 qty.	<b>D</b> Outer Frame (Left) 2 qty.
<b>E</b> Outer Frame (Right) 2 qty.	<b>F</b> Inner Frame 4 qty.	<b>G</b> Side Support Bracket (Right) 1 qty.	<b>H</b> Side Support Bracket (Left) 1 qty.
<b>I</b> Mid Post Frame (Left) 1 qty.	<b>J</b> Mid Post Frame (Right) 1 qty.	<b>K</b> Mid Post Bracket 1 qty.	<b>L</b> Controller 1 qty.
<b>M</b> Table Top Support Bracket 1 qty.	<b>N</b> Extension Cord 1 qty.	<b>O</b> Power Cable 1 qty.	<b>P</b> Height Adjustable Controller 1 qty.

## Hardware List and Tools Required

<b>A</b> M6 x 15 Bolt 8 pieces Tool: 5mm Allen Key	<b>B</b> M4 x 25 Phillips Screw 2 pieces Tool: #2 Phillips Screw Driver	<b>C</b> M5 x 20 Phillips Screw 35 pieces Tool: #2 Phillips Screw Driver
<b>D</b> M10 x 35 Bolt 8 pieces Tool: 5mm Allen Key	<b>E</b> Leveler 5 pieces Tool: 4mm Allen Key	<b>F</b> Set Screw (Pre-Installed) 8 pieces Tool: 4mm Allen Key
<b>G</b> M6*8-BW Hex Screw 6 pieces Tool: 4mm Allen Key	<b>H</b> M5 x 8 Screw 2 pieces Tool: #2 Phillips Screw Driver	<b>I</b> M10 x 20 Bolt 4 pieces Tool: 5mm Allen Key

## Warnings/Disclaimers

### INSTALLATION WARNINGS:

- Read the entire instruction manual before beginning any installation or assembly.
- Improper installation of this product may cause extensive property damage or serious personal injury, either during or after installation.

### DISCLAIMER:

- The manufacturer will bear no responsibility for any damages of any kind arising from improper installation of this product.

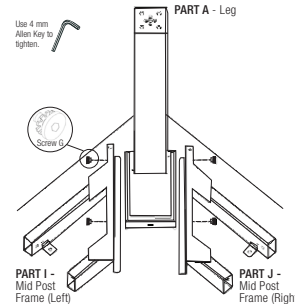
- Work surfaces will vary widely and the ultimate method of installing is out of the manufacturer's control. It is imperative that the installer consult the work surface installation guide to ensure that it can safely handle the applied load.

### ADJUSTMENT NOTIFICATION:

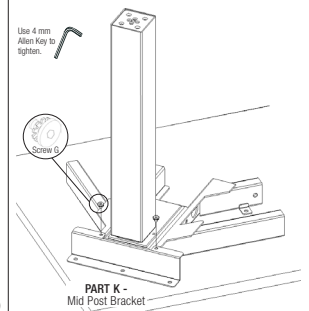
- Routine maintenance checks and adjustments are suggested to properly support the quality and optimal performance of this product.
- Over tightening of bolts during installation or adjustments can damage the product and affect the function and warranty.

## Installation Instructions

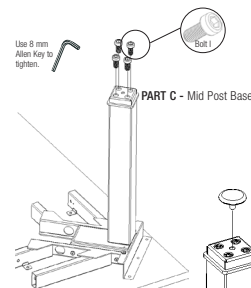
### STEP 1 Secure PART I & J - Mid Post Frames (Left/Right) to PART A - 1 x Leg with 4 x Screw G.



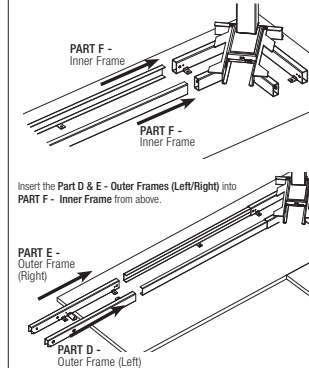
### STEP 2 Secure PART K - Mid Post Bracket to PART I and J with 2 x Screw G.



### STEP 3 Place PART C - Mid Post Base at the end of PART A - Leg. Secure with 4 x Bolt I.



### STEP 4 Insert PART F - 2 x Inner Frame into the Mid Post Frame from STEP 2.



Insert 1x Leveler E to the Mid Post Base. Tighten by hand. (The Leveler can be adjusted to level table surface later.)

# Installation Manual: Three Leg Kit

**STEP 5**  
Repeat STEP 4 on the opposite side.

PART F - Inner Frame  
PART D - Outer Frame (Left)  
PART E - Outer Frame (Right)

**STEP 6**  
Attach PART A - 1 x Leg to PART D & E - Outer Frames (Left/Right) from STEP 5 with 2 x Bolt A.

Use 5 mm Allen Key to tighten.

PART A - Leg  
PART D - Outer Frame (Left)  
PART E - Outer Frame (Right)

**STEP 7**  
Repeat STEP 6 on the opposite side.

Use 5 mm Allen Key to tighten.

PART A - Leg  
PART E - Outer Frame (Right)  
PART D - Outer Frame (Left)

**STEP 8**  
Slide PART G & H Side Support Brackets (Left/Right) into the Outer Frame (Left/Right) ends. The brackets must be fully inserted into the frame. A rubber mallet may be needed to complete engagement.

PART G - Side Support Bracket (Right)  
PART H - Side Support Bracket (Left)

**STEP 9**  
Fit each PART A - Leg into the final vertical position.

PART A - Leg

**STEP 10**  
Insert 4 x Bolt A through the sides of the table leg frame to secure the Side Support Brackets.

Use 5 mm Allen Key to tighten.

Bolt A

**STEP 11**  
Install PART L - Controller between the Inner Frames. Secure with 2 x Screw H.

Use a #2 Phillips Screwdriver to tighten.

PART L - Controller  
Screw H

**STEP 12**  
The optional PART M - Table Top Support Bracket should be secured with 8 x Screw C.

Use a #2 Phillips Screwdriver to tighten.

PART M - Table Top Support Bracket  
Screw C

4 Installation Manual: HEIGHT ADJUSTABLE TABLE: Three Leg Kit

5 Installation Manual: HEIGHT ADJUSTABLE TABLE: Three Leg Kit

**STEP 13**  
Connect PART P - Height Adjustment Controller to PART L - Controller.

PART L - Controller  
PART P - Height Adjustable Controller

**STEP 14**  
Connect PART N - Extension Cord to the farthest PART A - Leg from the PART L - Controller.

PART A - Leg  
PART N - Extension Cord  
PART L - Controller

**STEP 15**  
Connect all 3 Leg cables to the Controller.

Cable from Part A

**STEP 16**  
Connect PART O - Power Cable to the Controller.

PART O - Power Cable

**STEP 17**  
Adjust the frame to fit the table top.

**STEP 18**  
Secure the table frame to the table top using 27 x Screw C.

Use a #2 Phillips Screwdriver to tighten.

Screw C

**STEP 19**  
Tighten the 8 x Pre-installed Set Screw F on the inner side of the table leg frame.

Use 4 mm Allen Key to tighten.

Screw F

**STEP 20**  
Place the table Part B - Feet onto the ends of the legs. (Ensure the feet are facing the correct direction.) Use 8 x Bolt D to secure the feet to the legs. Insert the 4 x Leveler into the bottom of the feet. Tighten until secure. (The Levelers will have to be adjusted once the table is upright to ensure the table is level and stable)

Leveler  
PART B - Feet  
Screw D

Use 5 mm Allen Key to tighten.

6 Installation Manual: HEIGHT ADJUSTABLE TABLE: Three Leg Kit

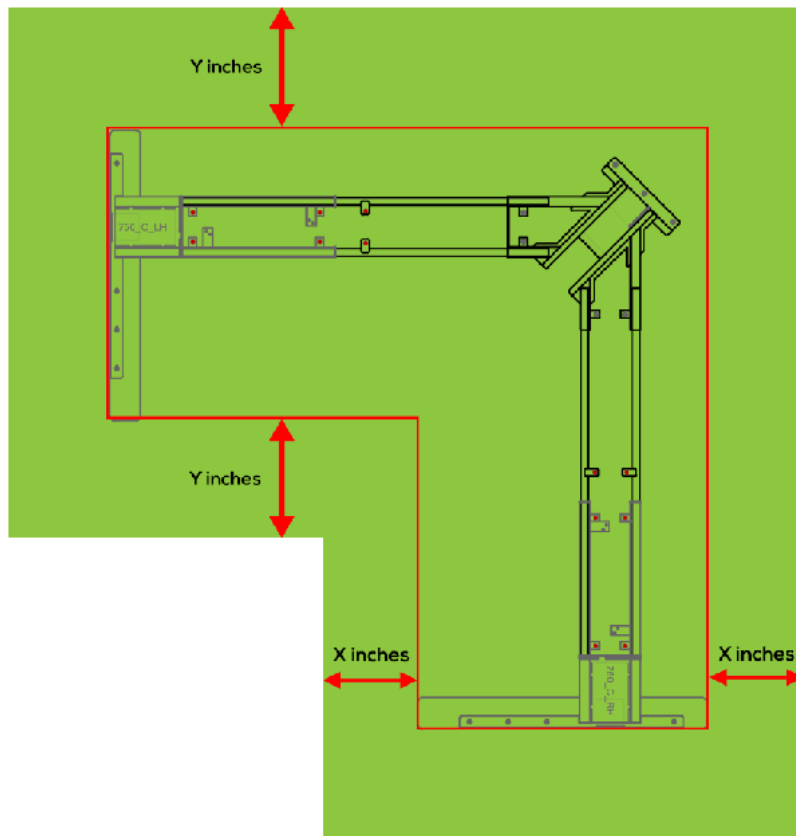
7 Installation Manual: HEIGHT ADJUSTABLE TABLE: Three Leg Kit

## How to attach your desktop to your base

### *L-shape and Corner Desks*

1. Assemble desk base per manufacturer's instructions and adjust it to fit your desktop size.
2. Using a carpenter's square, configure location where you will attach the desktop per Figure 1:

**Fig. 1**

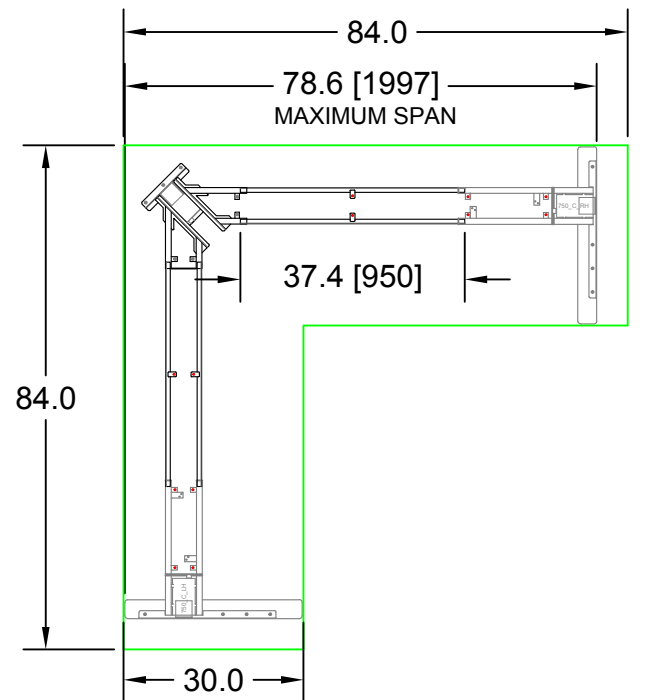
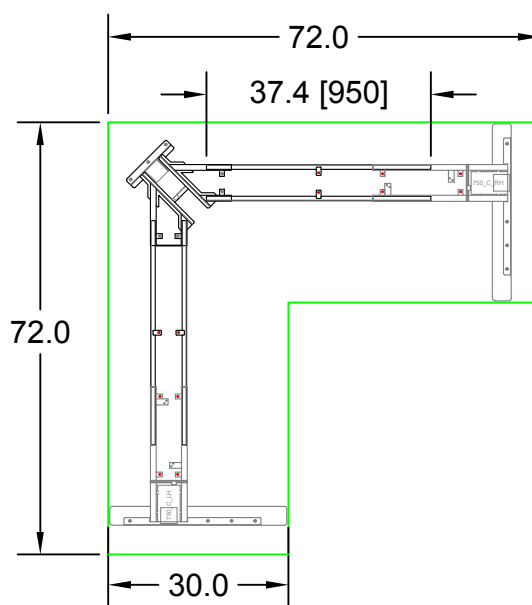
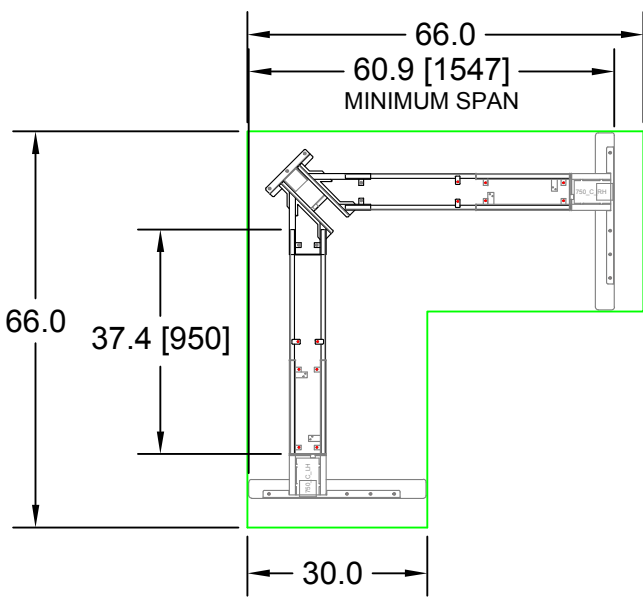
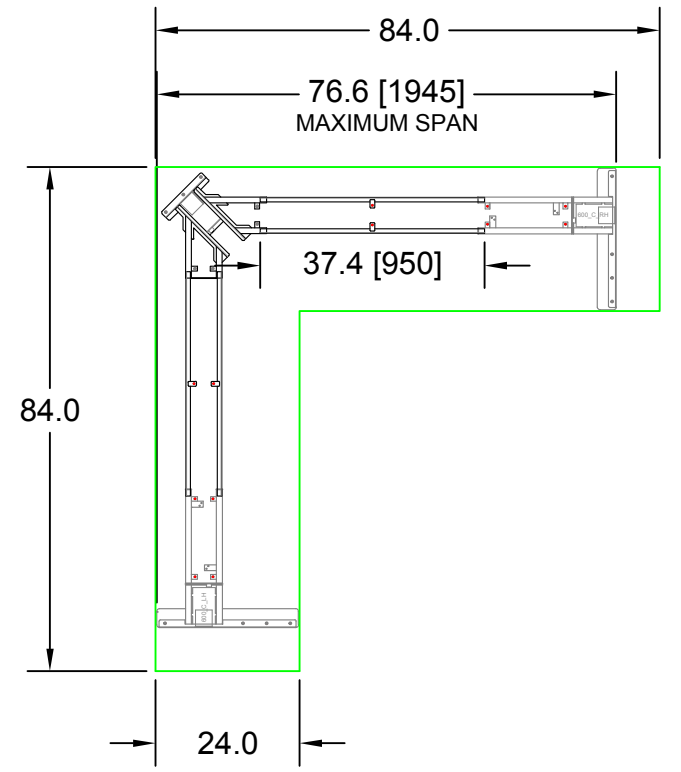
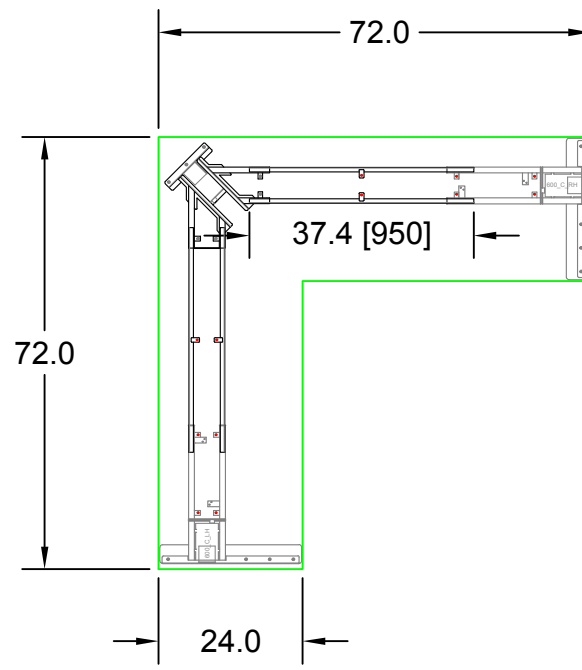
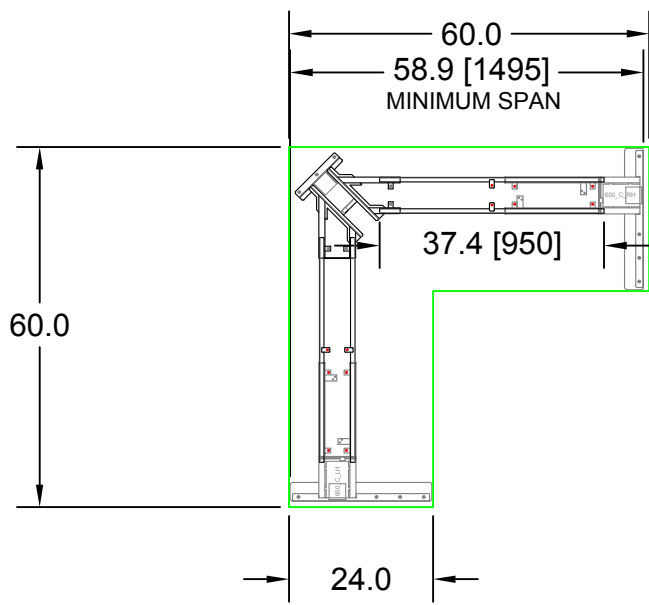


Use the carpenter's square to keep the rectangular profile of the base (represented by red outline) parallel to the edges of the desktop and centered therein. To



calculate the “X” and “Y” distances, subtract 23” from the overall width (X) and length (Y) of your desktop and divide by 2. Slight production variations may occur in the base mounting, so slight manual adjustments may be required to perfectly center the desktop.

3. ***Before you insert screws in desktop, do a quick check and make sure your screws are the proper length (make sure they don’t pierce the desktop surface!).***
4. Set desktop on base and attach it directly with screws per Figure 2. *Leave them loose to start* as you will likely have to make small adjustments for a snug fit with the base. *Do not overtighten.*





## Warranty

### **1.B3V\*D†      Height-adjustable L-shape/Corner Desk with Premium Base**

The manufacturer warrants to the original purchaser that the products it manufactures are free from defects in design, material and workmanship. With prompt written notice, the manufacturer will repair or replace, free of charge, any product, part or component which fails under normal use as a result of such defect.

The following exceptions to the warranty do apply:

- Electric components and motors are limited to 2 years, under normal operational conditions, subject to the inspection and determination of the manufacturer.
- Steel parts are limited to 5 years.

This warranty does not apply to:

- Damage in shipment caused by a carrier
- Defects caused by improper installation
- COM or third party materials applied to the products
- Customer modifications to the product
- Products subject to improper use and conditions.