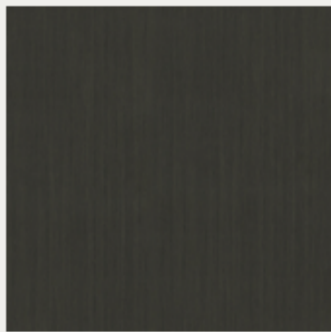
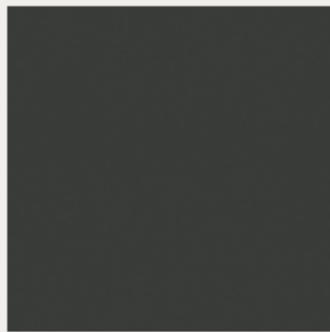


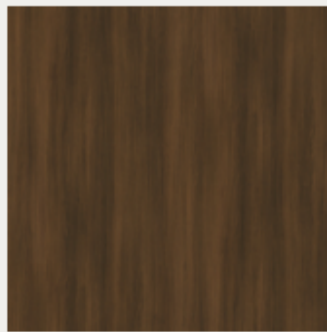
Laminates



Carbon (CB)



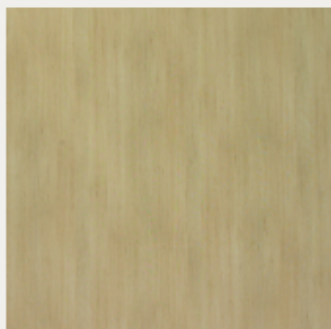
Charcoal (F)



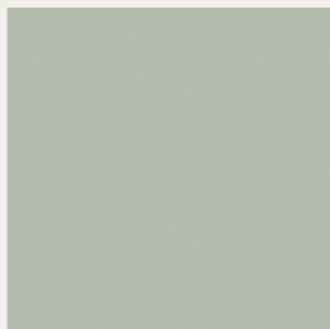
Chestnut (CG)



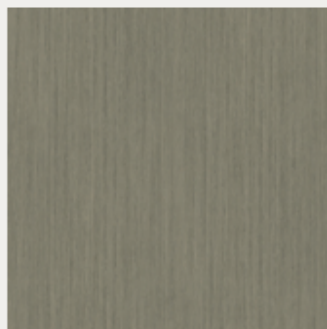
Dalia (DA)



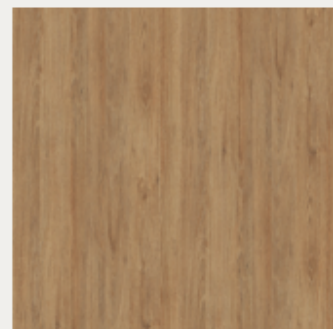
Douglas Pine (DP)



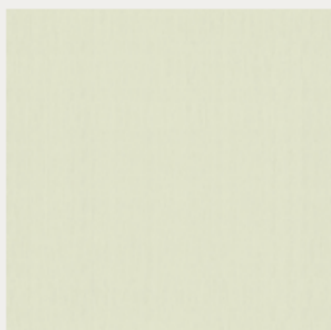
Frost (A)



Galaxy (GX)



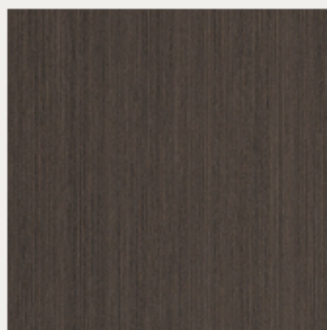
Ginger Root (GG)



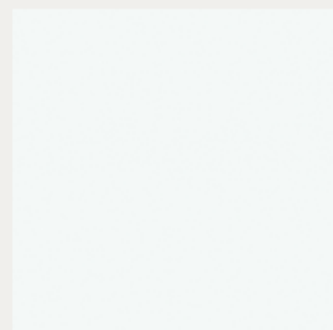
Sea Salt (SM)



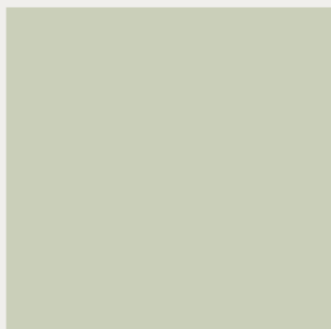
Sesame (SE)



Twilight (TL)



White (BW)

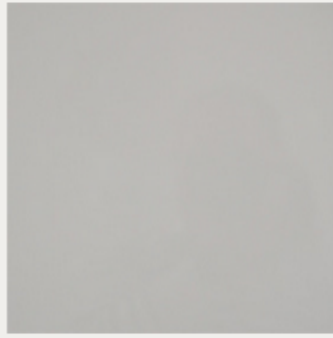


Willow Grey (WG)

Acrylics



Charcoal (AY01)



Grey (AY03)

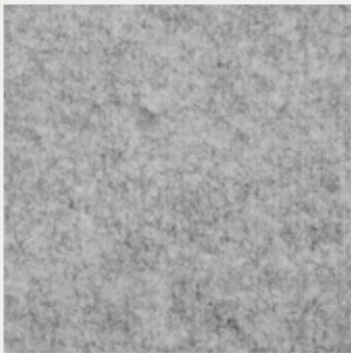


Sand (AY04)

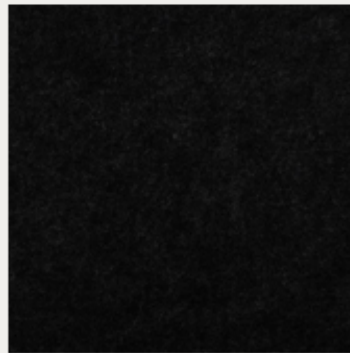


White (AY02)

Felt

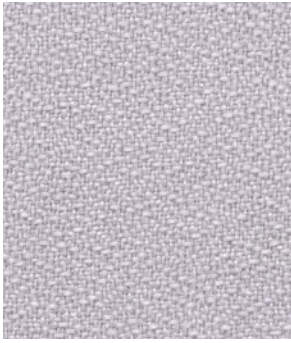


Mist (FE11)



Shadow (FE03)

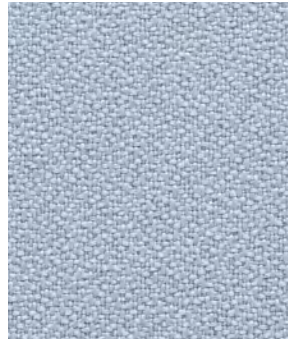
Panel Fabrics (Grade A only)



Fog / Brume
NA01



Sand / Sable
NA04



Azure / Azur
NA07



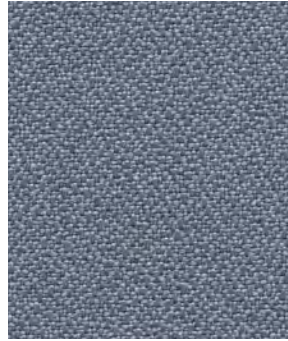
Poppy / Coquelicot
NA10



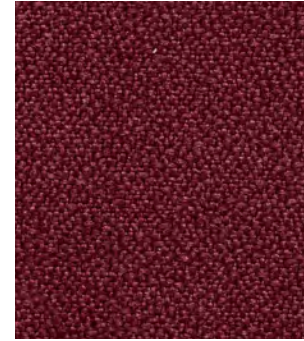
Squall / Orage
NA02



Mole / Taupe
NA05



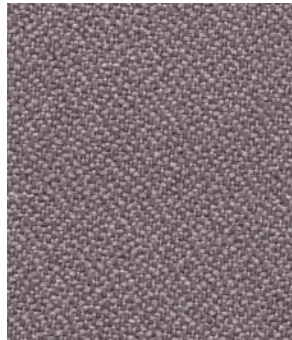
Storm / Rafale
NA08



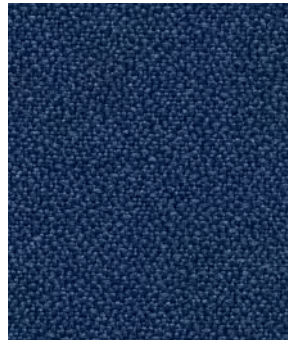
Plum / Prune
NA11



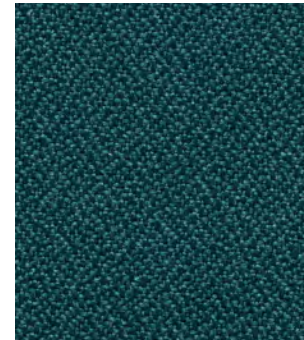
Black / Noir
NA03



Ash / Cendre
NA06



Navy / Marine
NA09



Forest / Forêt
NA12

SPECIFICATION / SPÉCIFICATIONS

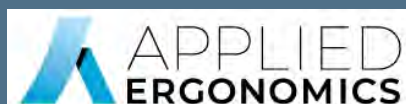
SPECIFICATION / SPÉCIFICATIONS	NATURE
Composition	100% Polyester
Weight-linear yard / Poids-verge linéaire	11.2 oz
Width / Largeur	60"
Flammability / Inflammabilité California - Tech. bulletin 117 Sec. E (CS-191-53) Californie - Bulletin tech. 117 Sec. E (CS-191-53)	Pass Passe
Tear strength / Résistance au déchirement ASTM D2261	Warp : 28 lbs Fill : 23 lbs

SPECIFICATION / SPÉCIFICATIONS

SPECIFICATION / SPÉCIFICATIONS	NATURE
Tensile strength ASTM D5034 / Résistance à la rupture ASTM D5034	Warp : 191 lbs Fill : 138 lbs
Color fastness to crocking AATCC 8 / Résistance au dégorçement AATCC 8	Dry / Sec : Class 4-5 Wet / Humide : Class 4-5
Abrasion resistance ASTM D4157 / Résistance à l'abrasion ASTM D4157	100 000 D.R. / D.F.
Cleaning code / Nettoyage	WS

© ARTOPEX INC. L1385-B-1018

artopex®



Please make an appointment to visit us
3401 Madison Street Skokie, IL 60076
www.appliedergonomics.com

Call us
Tel: (847) 679-5148
Fax: (847) 933-0018

Email the President directly
jmeltzer@appliedergonomics.com