

# Wood finishes & more finis bois et plus

## Symphony

Reconstituted Wood  
Soft-Touch  
Lacquer  
Glass

Bois reconstitué  
Soft-Touch  
Laque  
Verre

artopex®

## Wood - Seating Collection / Bois - Collection de fauteuils



Golden / Doré 214

Corresponding wood finishes:  
Assorti aux finis de bois :

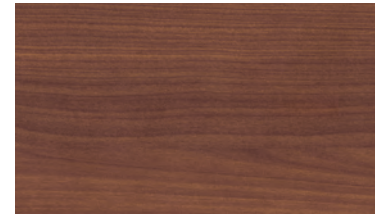
- WZ14  
Golden Zebra / Zebra doré
- WO14  
Golden Oak / Chêne doré



Natural / Naturel 300

Corresponding wood finishes:  
Assorti aux finis de bois :

- WZ78  
Natural Zebra / Zebra naturel
- WZ01  
Amber Zebra / Zebra ambré
- WO78  
Horizon Oak / Chêne horizon



Cognac 280

Corresponding wood finishes:  
Assorti aux finis de bois :

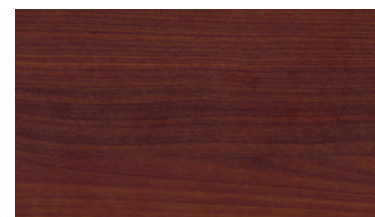
- WZ80  
Cognac Zebra / Zebra cognac
- WT80  
Cognac Teak / Teck cognac



Mocha / Moka 302

Corresponding wood finishes:  
Assorti aux finis de bois :

- WZ02  
Mocha Zebra / Zebra moka
- WO02  
Oak Zebra / Chêne moka
- WT01  
Amber Teak / Teck ambré



Ruby / Rubis 283

Corresponding wood finish:  
Assorti au fini de bois :

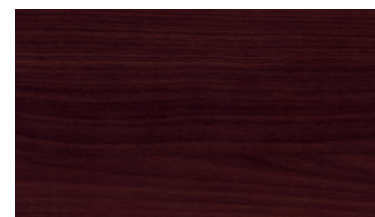
- WT83  
Ruby Teak / Teck rubis



Choco 303

Corresponding wood finishes:  
Assorti aux finis de bois :

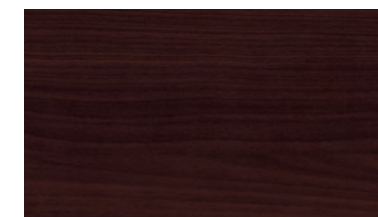
- WZ03  
Choco Zebra / Zebra choco
- WO03  
Choco Oak / Chêne choco



Porto 284

Corresponding wood finish:  
Assorti au fini de bois :

- WT84  
Porto Teak / Teck porto



Espresso 216

Corresponding wood finishes:  
Assorti aux finis de bois :

- WZ16  
Espresso Zebra / Zebra espresso
- WS16  
Dark Walnut / Noyer foncé
- All other Zebra colors /  
Toutes les autres couleurs Zebra



Silver / Argenté 304

Corresponding wood finish:  
Assorti au fini de bois :

- WS78  
Silver Walnut / Noyer argenté

Reproductions of the above colors may vary slightly from the actual colors.  
Please refer to actual samples available through your distributor.

Les couleurs ci-haut peuvent différer légèrement des couleurs réelles.  
Pour plus d'exactitude, veuillez vous référer aux échantillons véritables  
disponibles chez votre distributeur.

artopex®

Head Office / Siège social  
800 Vadnais  
Granby, Quebec J2J 1A7  
CANADA

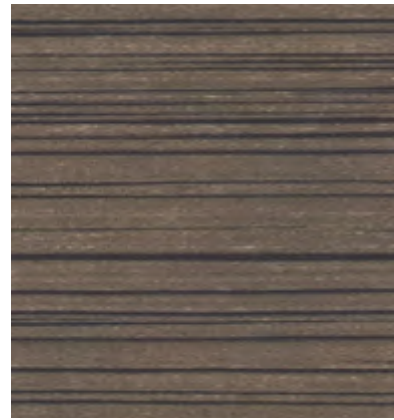
Telephone: (450) 378-0189  
1 800 363-3040  
Fax: (450) 378-9712  
artopex.com



Zebra



Natural Zebra / Zebra naturel WZ78



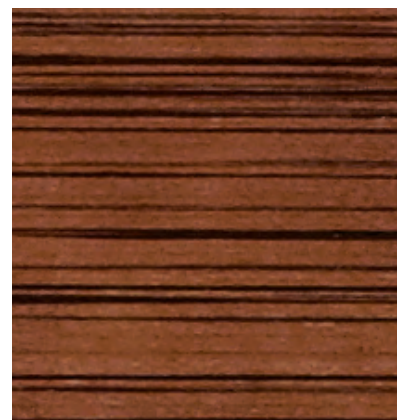
Silver Zebra / Zebra argenté WZ04



Amber Zebra / Zebra ambré WZ01



Golden Zebra / Zebra doré WZ14



Cognac Zebra / Zebra cognac WZ80



Mocha Zebra / Zebra moka WZ02



Espresso Zebra / Zebra espresso WZ16



Choco Zebra / Zebra choco WZ03

Oak / Chêne



Horizon Oak / Chêne horizon WO78



Golden Oak / Chêne doré WO14



Mocha Oak / Chêne moka WO02

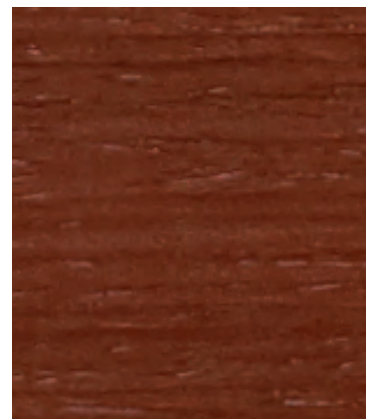


Choco Oak / Chêne choco WO03

Teak / Teck



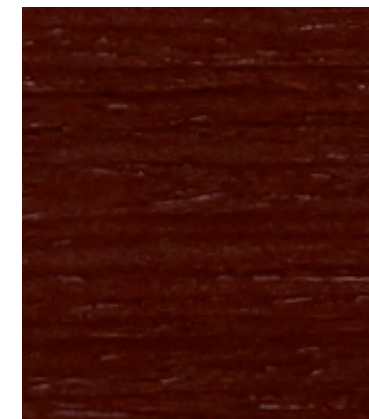
Amber Teak / Teck ambré WT01



Ruby Teak / Teck rubis WT83



Cognac Teak / Teck cognac WT80



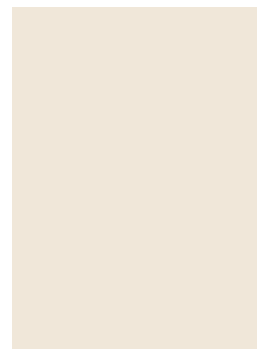
Porto Teak / Teck porto WT84

Walnut / Noyer



Dark Walnut / Noyer foncé WS16

Soft-Touch



Cream / Crème FT41



Terra Cotta FT42

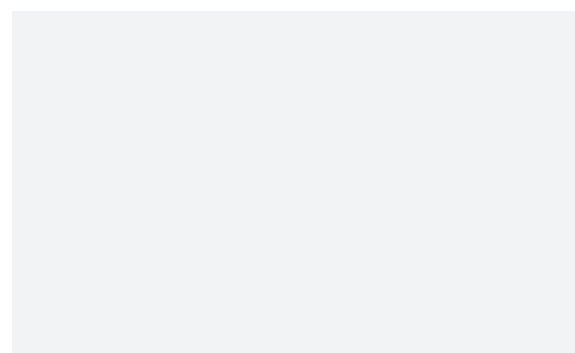


Brown / Brun FT43



Black / Noir FT44

Lacquer / Laque

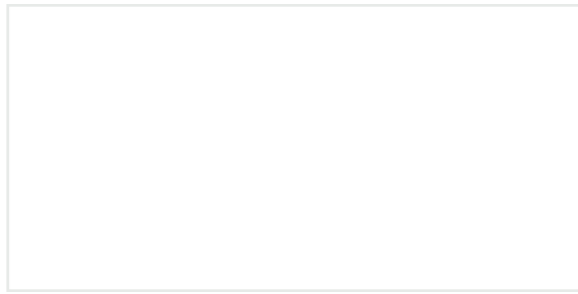


White / Blanc LQ31

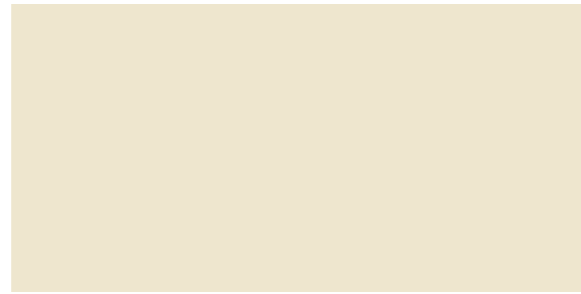
Glass / Verre



White Acid-Washed Glass / Verre dépoli blanc VG51



Polar White / Blanc polaire  
ARTOPEX - 3002



Antique White / Blanc antique  
ARTOPEX - 3004



Lemon / Citron  
ARTOPEX - 3104



Cactus  
ARTOPEX - 3105



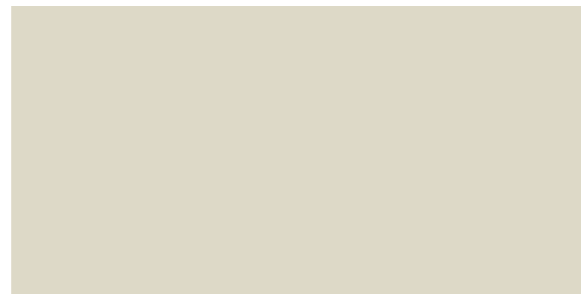
Suede / Suède  
ARTOPEX - 3023



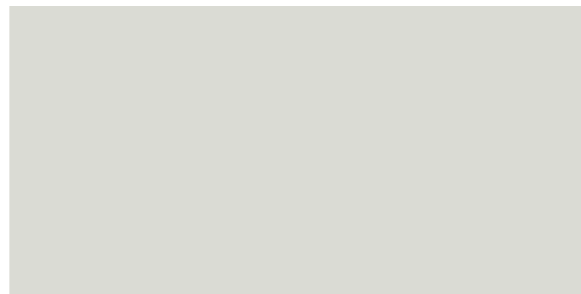
Espresso  
ARTOPEX - 3076



Silver / Argent  
ARTOPEX - 3090 \* Standard prices / Prix standards



Eggshell / Coquille d'oeuf  
ARTOPEX - 3005



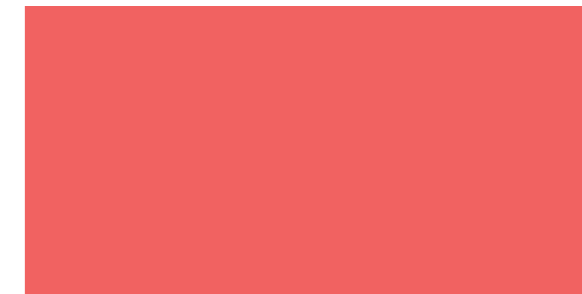
Fossil / Fossile  
ARTOPEX - 3102



Abyss / Alysse  
ARTOPEX - 3113



Mocha - Moka  
ARTOPEX - 3075



Smoothie  
ARTOPEX - 3109



Champagne  
ARTOPEX - 3311 \*\* Metallic prices / Prix métalliques



Sand / Sable  
ARTOPEX - 3009



Frost / Grès  
ARTOPEX - 3065



Source  
ARTOPEX - 3106



Mimosa  
ARTOPEX - 3114



Poppy / Coquelicot  
ARTOPEX - 3110



Ashen / Cendré  
ARTOPEX - 3370 \*\* Metallic prices / Prix métalliques



Warm Grey / Gris chaud  
ARTOPEX - 3061



Grey / Gris  
ARTOPEX - 3063



China Blue / Bleu Chine  
ARTOPEX - 3048



Amber / Ambre  
ARTOPEX - 3108



Cherry / Cerise  
ARTOPEX - 3111



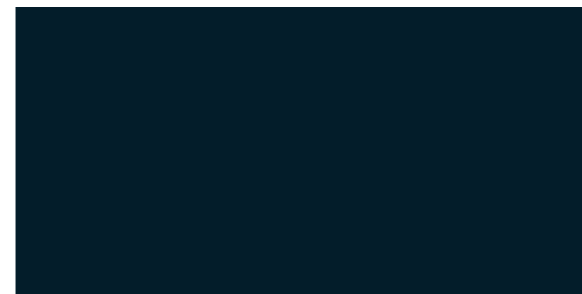
Black / Noir  
ARTOPEX - 3067



Shadow / Ombre  
ARTOPEX - 3101



Charcoal / Fusain  
ARTOPEX - 3064



Navy / Marine  
ARTOPEX - 3050



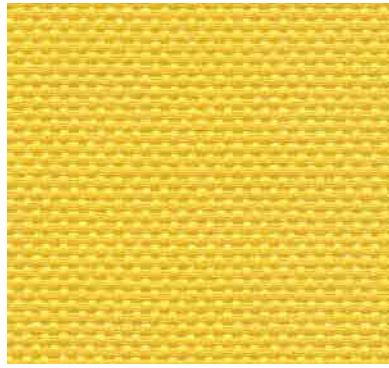
Tangerine  
ARTOPEX - 3020



Grenadine  
ARTOPEX - 3044

# Grade 1

## WHISPER II



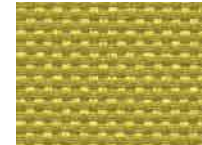
Peep WH91



Dim WH76



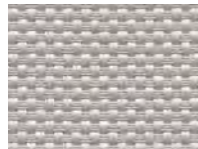
Tranquility WH80



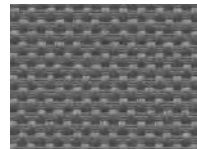
Reserve WH90



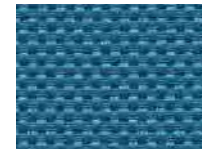
Muffle WH87



Stillness WH83



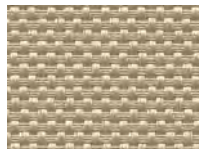
Lull WH89



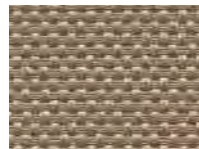
Placid WH94



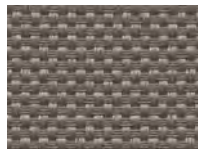
Mellow WH93



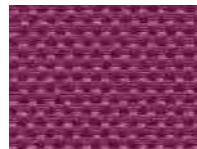
Hush WH81



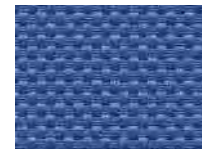
Mute WH84



Serenity WH85



Mum WH97



Secret WH96



Chant WH95

## NETIQUETTE



Inkjet NT96



Bitmap NT91



Refresh NT99



Gamma NT98



Analog NT94

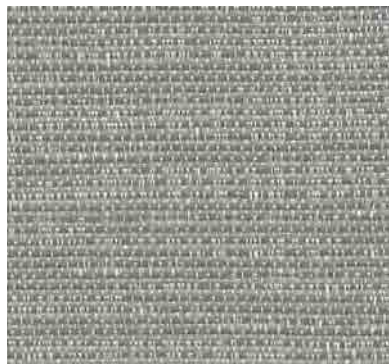


Pixel NT90



Vector NT97

## STRATA



Glacial SR81



Crag SR13



Lichen SR57



Seacliff SR45



Petra SR85



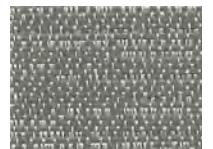
Tor SR11



Seneca SR58



Metamorphic SR52



Levee SR83



Druid SR12



Gully SR15

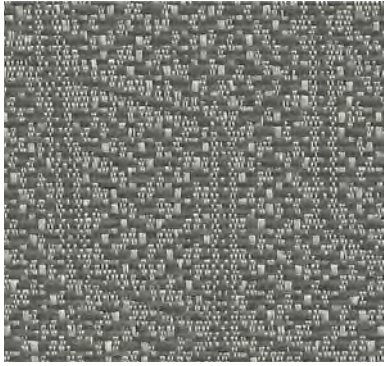


Sediment SR71



Meteora SR78

## CRYSTALLINE



Carbonate YS82



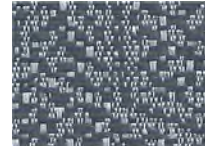
Travertine YS13



Stalagmite YS83



Pyroxene YS81



Mineral YS42



Tectonic YS21



Seismic YS52



Diorite YS51



Concentric YS41



Stalagite YS12



Vesuvian YS72



Mantle YS71



Feldspar YS31

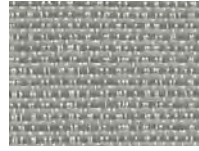
## CASCADE



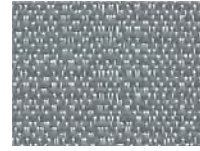
Calcium AS10



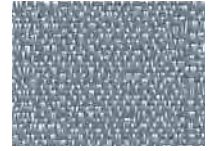
Aero AS19



Gorge AS86



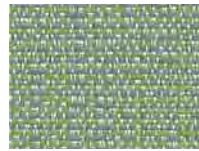
Promontory AS83



Stack AS45



Escarpment AS17



Geologic AS52



Peak AS51



Spur AS85



Kimberlite AS21



Granulite AS15



Igneous AS91



Plutonic AS73

## Grade 2

### OFF THE GRID



Flame OF10



Thermal OF06



Lava OF05



Flora OF12



Coal OF02



Fossil OF04



Hydro OF03



Tidal OF11



Earthglow OF09

## DASHING



Bespoke Tan DH46



Polished Slate DH44



Genteel Beige DH43



Dapper Grey DH47

## ESSENCE



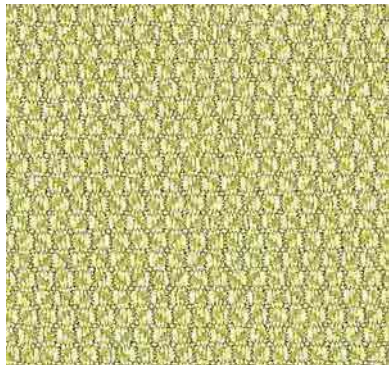
Mayflower ES35



Queen Mary ES37

## Grade 3

### PACT



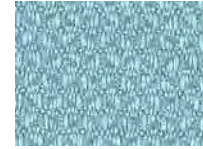
Fern PC88



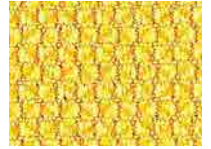
Dove PC55



Coastal PC33



Azure PC11



Eureka PC77



Taupe PC31



Roast PC76

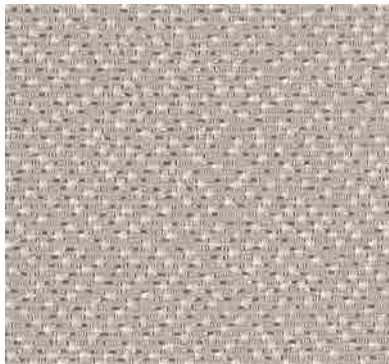


Nectar PC43



Roma PC87

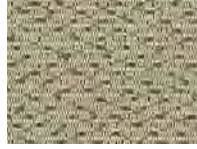
### UNIVERSE



White Cap UN77



Mica UN33



Seneca UN55

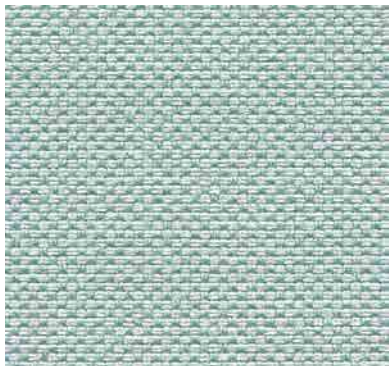


Cosmic UN26



Milkyway UN44

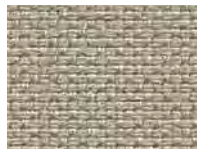
### CAPE COD



Cloud OD30



Linen OD31



Dune OD40



Apricot OD10



Surf OD62



Key lime OD50

# Moodboard

PROPOSED COLOR SCHEMES / PROPOSITION D'AGENCEMENT DE COULEURS



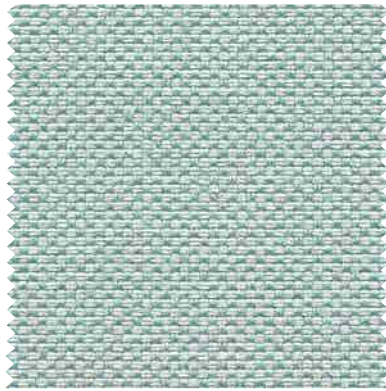
Sea Salt / Sel de mer SM



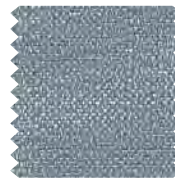
NT94



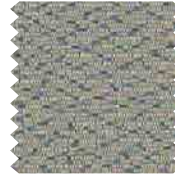
AS86



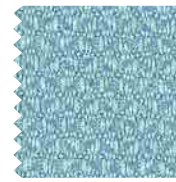
OD30



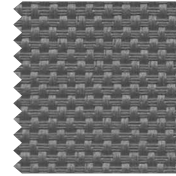
AS45



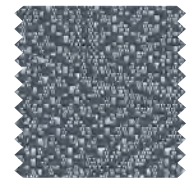
UN26



PC11



WH89



YS42



OF11



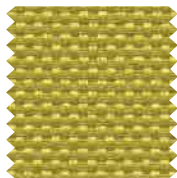
DH43



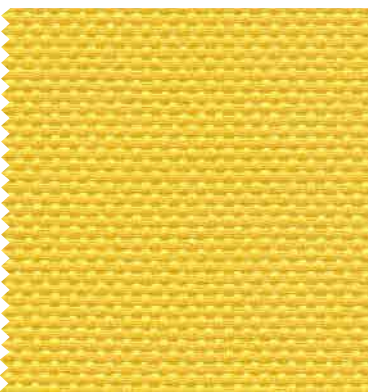
PC88



NT99



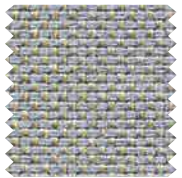
WH90



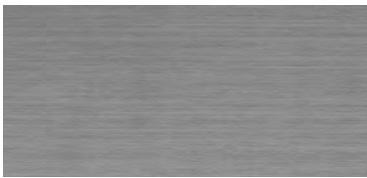
WH91



NT96



OD62

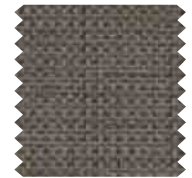


Galaxy / Galaxie

GX



AS73



OF02



WH76



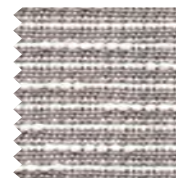
UN55



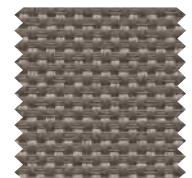
OD50



Carbon / Carbone CB



DH47



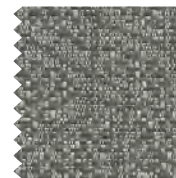
WH85



OD31



AS51



YS82



AS91



YS21



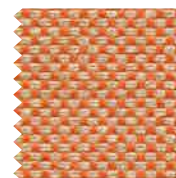
PC77



PC43



PC31



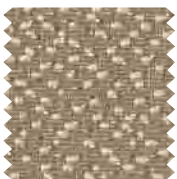
OD10



PC76



OD40



UN44



OF04



Twilight

TL

SPECIFICATION / SPÉCIFICATIONS	WHISPER II*	NETIQUETTE	STRATA	CRYSTALLINE	CASCADE
Composition	53% Recyc. - PC 100% Polyester	31% Recyc. - PC 100% Polyester	100% Recyc. - PC 100% Polyester	100% Recyc. - PC 100% Polyester	100% Recyc. - PC 100% Polyester
Weight-linear yard / Poids-verge linéaire	10.9 oz	9.6 oz	10 oz	11 oz	11 oz
Width / Largeur	68"	66"	67"	67"	67"
<b>PERFORMANCE / PROPRIÉTÉS</b>					
Tensile strength / Résistance à la rupture	Warp : 274 lbs Fill : 150 lbs	Warp : 259 lbs Fill : 132 lbs	Warp : 100 lbs Fill : 100 lbs	Warp : 100 lbs Fill : 100 lbs	Warp : 100 lbs Fill : 100 lbs
Color fastness to light / Résistance à la lumière	40hrs. Class/Classe 4.5	40hrs. Class/Classe 4	40hrs. L5	40hrs. L5	40hrs. L5
Color fastness to crocking AATCC 8 / Résistance au dégoûgement AATCC 8	Dry / Sec : Class 5 Wet / Humide : Class 5	Dry / Sec : Class 5 Wet / Humide : Class 5	Dry / Sec : Class 5 Wet / Humide : Class 5	Dry / Sec : Class 5 Wet / Humide : Class 5	Dry / Sec : Class 5 Wet / Humide : Class 5
Abrasion resistance / Résistance à l'abrasion	ASTM D-4157 100 000 D.R. / D.F.	ASTM D-4157 50 000 D.R. / D.F.			
Cleaning code / Nettoyage	WS	WS	WS	WS	WS
Acoustic textiles / Tissus acoustiques	Yes / Oui	Yes / Oui			
<b>FLAMMABILITY / INFLAMMABILITÉ</b>					
ASTM E-84	Class 1 or A	Class 1 or A	Class 1 or A	Class 1 or A	Class 1 or A
California - Tech. bulletin 117 Sec. E (CS-191-53) Californie - Bulletin tech. 117 Sec. E (CS-191-53)	Passes Passe	Passes Passe			
<b>SAMPLING CONTACT / ÉCHANTILLON</b>	victortextiles.com (418) 227-9897	victortextiles.com (418) 227-9897	artopex.com (800) 363-3040	artopex.com (800) 363-3040	artopex.com (800) 363-3040

SPECIFICATION / SPÉCIFICATIONS	OFF THE GRID*	DASHING	ESSENCE	PACT	UNIVERSE	CAPE COD
Composition	87% Recyc. 49% Pl, 38% PC 100% Polyester	100% Recyc. 100% Polyester	100% Polyester	100% Recyc. 65% Pl, 35% PC 100% Polyester	50% Recyc. - PC 100% Polyester	100% Recyc. 76% Pl, 24% PC 100% Polyester
Weight-linear yard / Poids-verge linéaire	10 oz	10.9 oz	11.8 oz	12.9 oz	11.7 oz	12.4 oz
Width / Largeur	67"	66"	66"	66"	66"	66"
<b>PERFORMANCE / PROPRIÉTÉS</b>						
Tensile strength / Résistance à la rupture	Warp : 188 lbs Fill : 169 lbs	Warp : 240 lbs Fill : 191 lbs	Warp : 140 lbs Fill : 105 lbs	Warp : 292 lbs Fill : 307 lbs	Warp : 137 lbs Fill : 190 lbs	Warp : 150 lbs Fill : 150 lbs
Color fastness to light / Résistance à la lumière	40hrs. Class/Classe 4	40hrs. Class/Classe 4	40hrs. L5	40hrs. Class / Classe 4	40hrs. Class / Classe 4	40hrs. Class / Classe 4
Color fastness to crocking AATCC 8 / Résistance au dégoûgement AATCC 8	Dry / Sec : Class 5 Wet / Humide : Class 5	Dry / Sec : Class 4 Wet / Humide : Class 4	Class/Classe 4	Dry / Sec : Class 4.5 Wet / Humide : Class 4.5	Dry / Sec : Class 5 Wet / Humide : Class 5	Dry / Sec : Class 4 Wet / Humide : Class 3
Abrasion resistance / Résistance à l'abrasion	ASTM D-4157 100 000 D.R. / D.F.	ACTM D-4157 Mod. 60 000 D.R. / D.F.	ASTM D-4157 Mod.	50 000 D.R. / D.F.		
Cleaning code / Nettoyage	WS	WS	WS	WS	WS	WS
Acoustic textiles / Tissus acoustiques						Yes / Oui
<b>FLAMMABILITY / INFLAMMABILITÉ</b>						
ASTM E-84	Class 1 or A	Class 1 or A	Class 1 or A	Class 1	Class 1 or A	Class 1 or A
California - Tech. bulletin 117 Sec. E (CS-191-53) Californie - Bulletin tech. 117 Sec. E (CS-191-53)	Passes Passe	Passes Passe	Passes Passe	Passes Passe	Passes Passe	Passes Passe
<b>SAMPLING CONTACT / ÉCHANTILLON</b>	victortextiles.com (418) 227-9897	victortextiles.com (418) 227-9897	victortextiles.com (418) 227-9897	memosamples.com (800) 366-6839	memosamples.com (800) 366-6839	guilfordofmaine.com (800) 544-0200

\* OFF THE GRID - lava OF05, thermal OF06 / WHISPER II- dim WH76, peep WH91.  
These four colours are not recommended with the TakeOff System.  
Ces quatre couleurs ne sont pas recommandées avec le SystèmeTakeOff.

## Graded-in and pre-tested fabrics

In order to offer a wide selection of fabrics, a list of fabrics graded-in and pre-tested by Artopex (in various grades) is available at artopex.com. Please refer to the websites of the fabric manufacturers and distributors on this list to view the choices and/or to order samples of complementary fabrics.

## Tissus pré-gradés et pré-testés

Dans le but d'offrir une grande variété de tissus, une liste de tissus pré-gradés et pré-testés par Artopex (incluant divers grades) est disponible sur le artopex.com. Veuillez vous référer au site internet des différents manufacturiers et distributeurs de tissus présentés sur cette liste afin de visualiser les choix offerts et/ou commander des échantillons pour ces tissus complémentaires.

Colours may vary from the actual colours due to the printing process used.  
Please refer to samples for true colours.  
Les couleurs sont aussi fidèles que les techniques d'impression le permettent.  
Référez-vous aux échantillons pour les couleurs réelles.



Please make an appointment to visit us  
3401 Madison Street Skokie, IL 60076  
[www.appliedergonomics.com](http://www.appliedergonomics.com)

Call us  
Tel: (847) 679-5148  
Fax: (847) 933-0018

Email the President directly  
[jmeltzer@appliedergonomics.com](mailto:jmeltzer@appliedergonomics.com)