



Dedicated to Design.  
Committed to Quality.

# Seating Upholstery

& Finish Color Selection Guide



Grade 5



Lava  
LAV12 Stratum



LAV07 Terra



LAV13 Stream



LAV06 Bedrock



LAV05 Sunfire



LAV04 Obsidian



LAV01 Geode

Grade 2



New Hempstead  
NH509 Galaxy



NH420 Jodhpurs



NH359 Azure



NH389 Red Red Wine



NH424 Cocoa



NH366 Steel

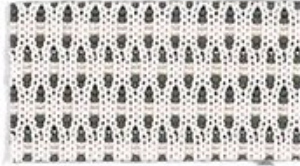


NH395 Grey

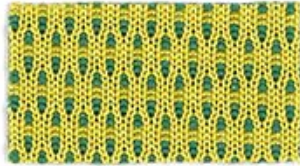
Grade 4



Flex  
63237 Moody



63232 Contrast



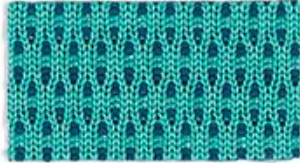
63230 Refresh



63238 Passion



63236 Storm



63233 Escape



63240 Thunder

Grade 3



Clean Slate  
CLN39 Indigo



CLN28  
Acorn



CLN32  
Tangerine



CLN34  
Lime



CLN41  
Teal



CLN40  
Chili



CLN46  
Mocha



CLN22  
Stone



CLN27  
Shark



CLN42  
Willow



CLN20  
Cobalt



CLN44  
Maroon



CLN48  
Onyx

## Grade 4 - Nytek® Breathable Nylon Upholsteries



**Black Finesse**



**Grey Finesse**



**Indigo Finesse**

## Grade 3 - Phoenix+ Vinyl Upholsteries



**PH65 Pearl**



**PH64 Nearly Black**



**PH62 Claret**



**PH63 Navy**

\* Can meet CA 133 with suitable components

## Colors for GG Series Chairs



**Burgundy**



**Navy Blue**



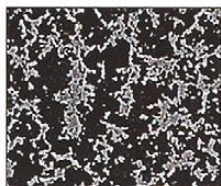
**Black**

Please note: Actual colors may differ from those shown.

## Standard Metal Part Powder Coat Finishes\*



**06 Black**



**05 Silvervein**



**04 Gray**



**02 Almond**

Please note: Actual colors of metal part finishes may differ from those shown.

\*Chrome available for additional cost.

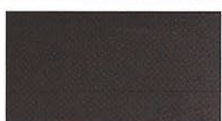
## Shell Colors for KX Series Chairs



**Newport Burgundy**



**Highland Green**



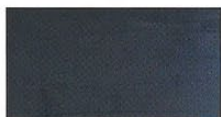
**Nordic Black**



**Mediterranean Blue**



**Caribbean Orange**



**Pacific Blue**

Please note: Actual colors of upholstery may differ from those shown here. Swatches are available upon request.

## Performance Attributes of Patterns

Pattern	Enhanced Soil/Stain Resistance	Fluid-Barrier Protection	Extreme Durability >100,000 dr	Antimicrobial Protection	Bleach-Solution Cleanable	Reduced Environmental Impact
<b>Avant</b>	•	•	•	•	•	GREENGUARD
<b>Bryant Park</b>	•		•			GREENGUARD Gold
<b>Clean Slate</b>	•	•	•	•	•	GREENGUARD
<b>Dart</b>	•					GREENGUARD Gold Facts™ Gold Recycled Content
<b>Flex</b>	•		•	•	•	GREENGUARD Gold bluesign®
<b>Helix</b>	•		•	•	•	GREENGUARD Gold / Recycled Content
<b>Lava</b>	•	•	•	•	•	GREENGUARD
<b>Moccasin</b>	•	•	•	•	•	GREENGUARD
<b>New Hempstead</b>	•		•			GREENGUARD Gold
<b>Sideline</b>	•		•			GREENGUARD Gold / Recycled Content
<b>Tribeca</b>	•		•			GREENGUARD Gold

## Specifications

Pattern	Content	Abrasion (Wyzenbeek)	Protective Finish	Cleaning Code
<b>Avant</b>	Contract Vinyl	1,500,000 double rubs	Advanced Soil/Stain Resistant Top Coat	<b>W-S</b>
<b>Bryant Park</b>	100% Polyester	100,000 double rubs	Enhanced Soil/Stain Protection	<b>W</b>
<b>Clean Slate</b>	Contract Vinyl	100,000 double rubs	Advanced Soil/Stain Resistant Top Coat + Ink Resistance	<b>W-S</b>
<b>Conductive Black Vinyl</b>	Vinyl Coated Fabric		Dirt/Stain Resistant	
<b>Dart</b>	58% Polyester, 27% Post Industrial Recycled Polyester, 15% Post Consumer Recycled Polyester	70,000 double rubs	Enhanced Soil/Stain Protection	<b>W-S</b>
<b>Flex</b>	100% Polyester	100,000 double rubs	Non-PFOA Stain Resistant	<b>W-S</b>
<b>Helix</b>	50% Post Industrial Recycled Solution Dyed Nylon, 50% Solution Dyed Nylon	100,000 double rubs	Blockaide™ Soil/Stain Protection	<b>W-S</b>
<b>Lava</b>	Contract Vinyl	100,000 double rubs	Zeron® Protective Finish	<b>W-S</b>
<b>Microcon Vinyl</b>	Static-dissipative Vinyl	100,000 double rubs		<b>W**</b>
<b>Moccasin</b>	Contract Vinyl	100,000 double rubs	Soil/Stain Resistant Top Coat	<b>W-S</b>
<b>New Hempstead</b>	100% Polyester	750,000 double rubs	Enhanced Soil/Stain Protection	<b>W-S</b>
<b>Nytek®</b>	Nytek® Specially Engineered Nylon Fiber Matrix	250,000 double rubs	Built-in Stain Resistant Finish	<b>W</b>
<b>Phoenix</b>	Contract Vinyl	250,000 double rubs	Enhanced Soil/Stain Protection	<b>W-S</b>
<b>Sideline</b>	100% Post Industrial Recycled Polyester	100,000 double rubs	Enhanced Soil/Stain Protection	<b>W-S</b>
<b>Tribeca</b>	100% Polyester	100,000 double rubs	Enhanced Soil/Stain Protection	<b>W-S</b>
<b>U R Grounded</b>	97.5% Nylon, 2.5% Conductrol™	100,000 double rubs		

Conductrol™ is a trademark of Sterling Fibers, Inc.  
Nytek® is a registered trademark of Majilite Corporation, Dracut, MA 01826.

### \*\* Cleaning:

Clean with a solution of mild liquid soap and water, then wipe with a lint-free cloth. The use of any product containing silicone, alcohol, or solvents is not recommended, as it will adversely affect the ESD properties of the materials.

### Flammability:

All patterns meet or exceed the flammability requirements of California Technical Bulletin 117-2013, Sec.1. Some patterns have been tested for other flammability specifications. These patterns may contribute to compliance with California Technical Bulletin 133 when used in conjunction with other suitable components.

### Cleaning Codes:

**W:** Water-based cleaning agents and foam may be used for cleaning. Cleaning by a professional furniture cleaning service is recommended.

**W-S:** Water-based cleaning agents and foam may be used for cleaning. This material may also be cleaned with mild, water-free solvents. Cleaning by a professional furniture cleaning service is recommended.

**Memo Samples:** Please contact BioFit at 800-597-0246 or [biofit@biofit.com](mailto:biofit@biofit.com)



Please make an appointment to visit us at:  
3401 Madison Street  
Skokie, IL 60076  
[www.appliedergonomics.com](http://www.appliedergonomics.com)

Call us (847) 679-5148  
Toll-free: (844) 859-9247  
Fax: (847) 933-0018

Email the President directly  
[jmeltzer@appliedergonomics.com](mailto:jmeltzer@appliedergonomics.com)