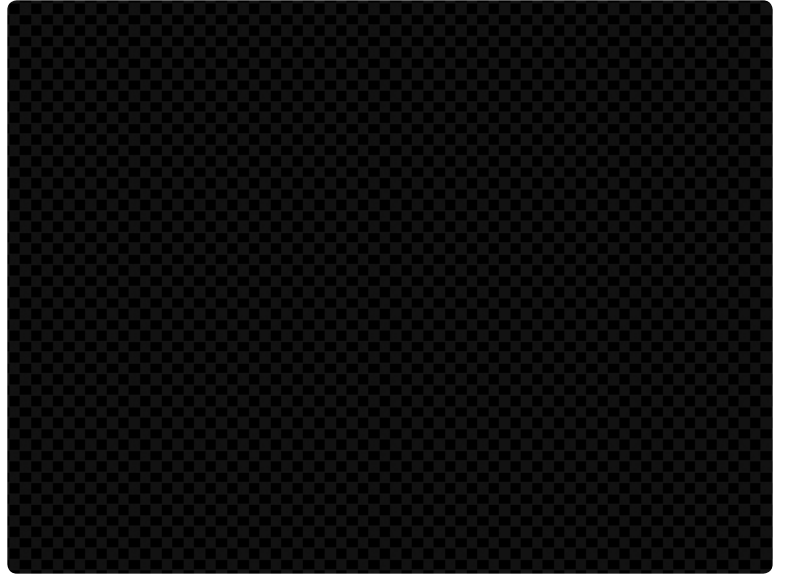
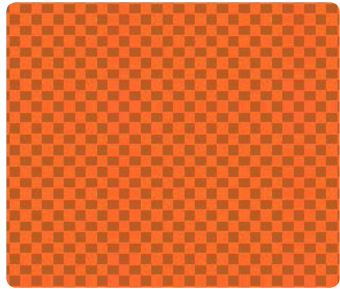


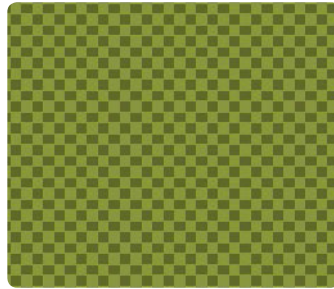
compel[®]



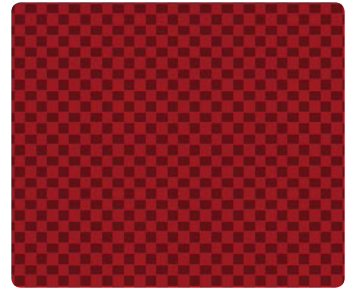
Black



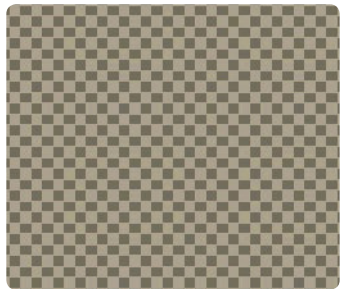
Orange



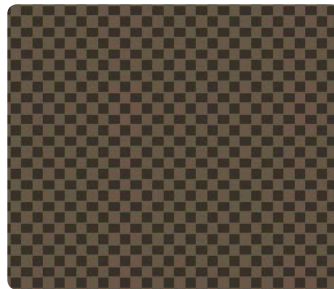
Green



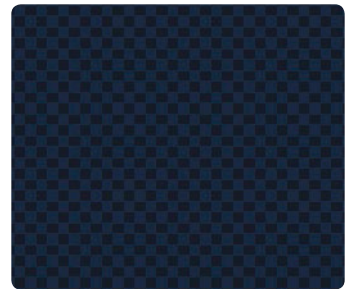
Red



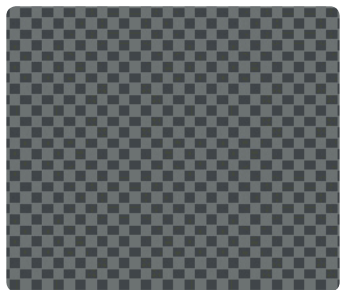
Beige



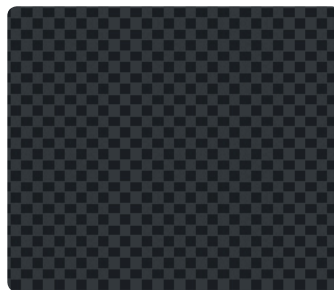
Brown



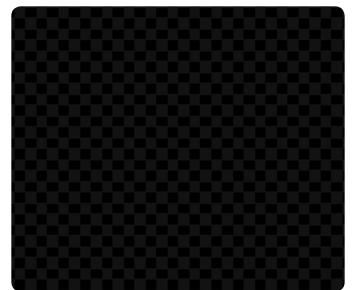
Nautical



Alloy

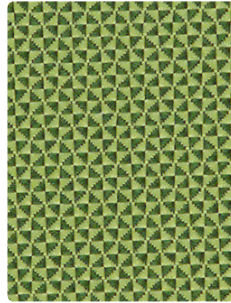


Graphite

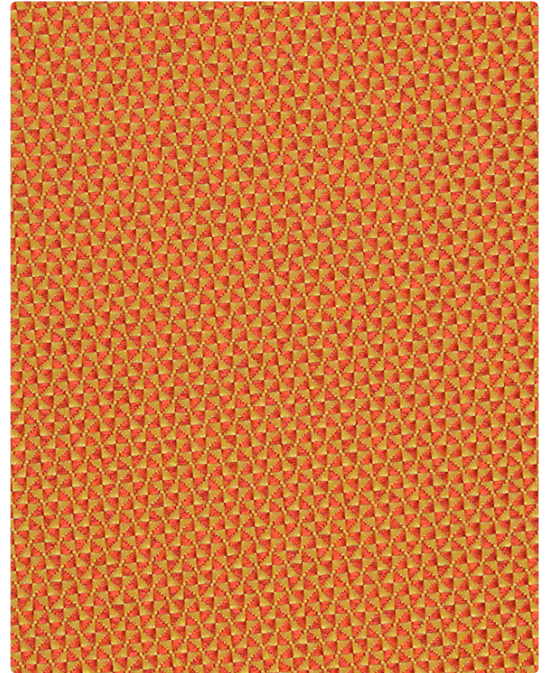


Black

MAYER FABRICS QUATTRO - GRADE 1



300-003
Spring Green



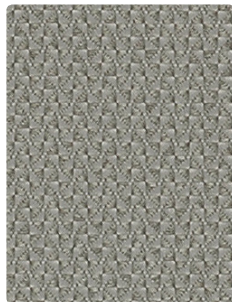
300-019
Golden Orange



300-036
Pumice



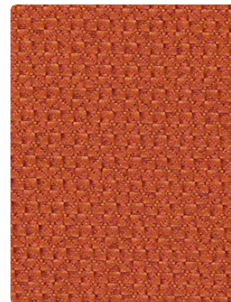
300-033
Leaf



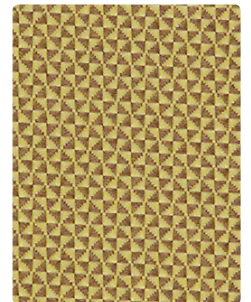
300-026
Mercury



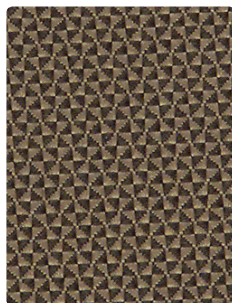
300-023
Mallard



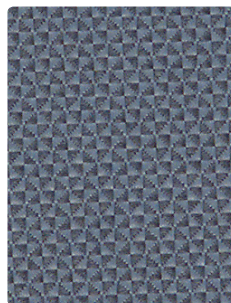
300-009
Umber



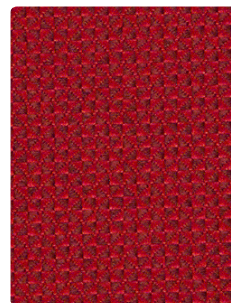
300-002
Wheat



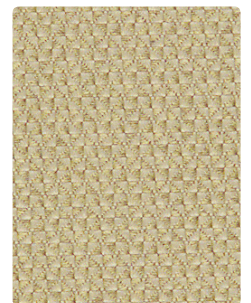
300-016
Khaki



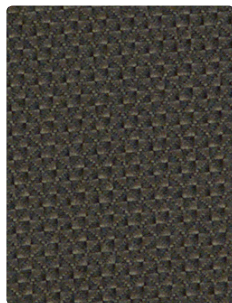
300-024
Laguna



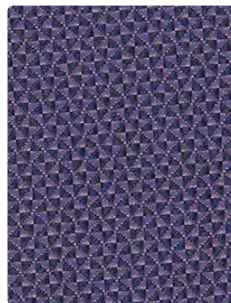
300-001
Deep Crimson



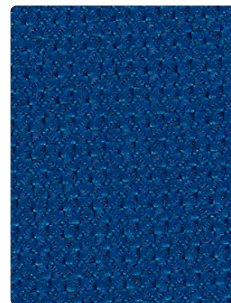
300-007
Chalk



300-006
Granite



300-004
Midnight Blue



300-014
Skyway



300-000
Honeycomb

compel[®]

Application
Upholstery Seating

Content
100% Polyester

Width
54 inches

Abrasion (Wyzenbeek/Cotton Duck)
Passes 237,000 Double Rubs

Finish
Stain Repellent

Reduced Environmental Impact
GREENGUARD Gold Certified



TECHNICAL INFORMATION

Content: 100% Polyester

Width: 54"

Backing: Acrylic

Approx. Repeat: Non-matching

Weight: 13.06 oz./linear yard

Finish: Stain Repellent

Directional: Yes

Shown Railroaded: No

PERFORMANCE

Surface Abrasion: Heavy Duty ASTM D 4157
(Wyzenbeek/Cotton Duck)

Pilling Resistance ASTM D 3511

Colorfastness to Crocking AATCC-8

Colorfastness to Light AATCC 16

Results

Passes 237,000 Double Rubs Multiple factors affect fabric durability and appearance retention, including end-user application and proper maintenance. Wyzenbeek results above 100,000 double rubs have not been shown to be a reliable indicator of increased fabric lifespan.

Class 5

Dry: Class 4 min / Wet: Class 4 min

Class 4.5 at 40 hours

FLAMMABILITY

California Technical Bulletin 117-2013

NFPA 260/UFAC Class 1

ASTM E84 (Unadhered) Class 1 or A

IMO A.652(16) 8.2

May comply with California Technical Bulletin 133 when combined with appropriate components.

REDUCED ENVIRONMENTAL IMPACT

This product is GREENGUARD Gold Certified for low chemical and particle emissions to UL standard UL 2818 and may contribute to LEED certification. For complete information visit mayerfabrics.com and UL.com/gg.

CLEANING INFORMATION

S: Solvent

ADDITIONAL INFORMATION

Custom Capabilities: All patterns can be custom colored. Minimum yardage applies.

Digital Swatch Card Color Matching: Due to color variations on different monitors and color printers, actual swatch colors may vary slightly. Please request a memo sample from Mayer Fabrics to ensure proper color representation.

Specifications: Specifications are correct at the time of printing. Current specifications are available on our website.



This fabric meets or exceeds these ACT performance guidelines.
*Certification Marks owned by ACT®



This 100% polyester fabric is included in the Underwriter's Laboratory Fabric Recognition Program. Additional testing of this U.L. recognized component is not required on approved panels from participating manufacturers.



Water and Stain
Repellent Finish



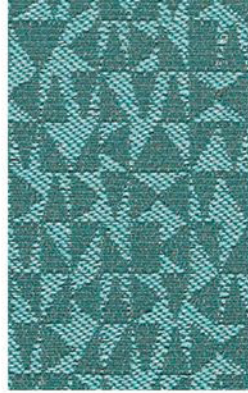
MAYERFABRICS



MOMENTUM TEXTILES GRADE 2



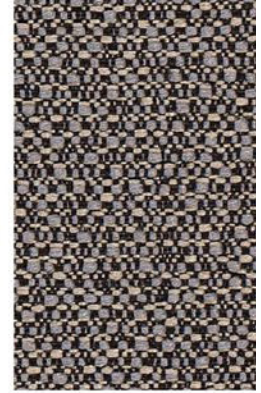
SKIP CHALK



SYNTAX TURQUOISE



PERK PEWTER



BANGLE GRANITE



MUSHROOM



NICKEL



CAMEL



PLANT



SESAME



DIJON



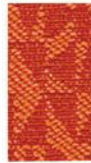
CORK



POOL



CLEMENTINE



FLARE



SHALE



CABANA



CEDAR



ORCHID



COBALT



RUBY



CARMINE



PEWTER



COLOR



PEWTER



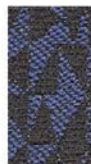
TEAK



SPRITE



ALLOY



HUDSON



COCOA



CRIMSON



PATRIOT



BALTIC



SPARROW



CAPTAIN



VIOLET



TIGER EYE



REGAL



FLINT



SUEDE



DEEP



ONYX



STEEL



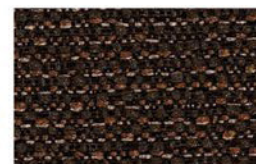
ASPHALT



WALNUT



EBONY



SABLE

MOMENTUM TEXTILES GRADE 2



INSIGHT WASABI



HABIT ASPEN



ORIGIN GAIA



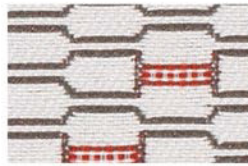
FUSE LUNAR



FOSSIL



BLONDE



SALT



SYSTEM



MIKAN



SAFFRON



MALTED



SHALE



REAL RED



KINDLE



SODALITE



POPPY



MOREL



PRISTINE



PERIWINKLE



PORT



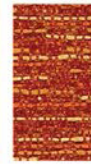
DUNE



INDIGO



FEZ



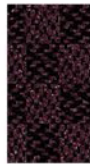
PIMENTO



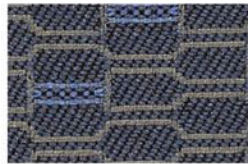
CRESS



MIDNIGHT



EGGPLANT



BLUEPRINT



SAPPHIRE



GARNET



GINGER



AZUREAN



SUMMIT



BARK



PIER



MANTA



STEEL



CARMINE



WALNUT



PEPPER



EBONY



TAILOR



IRON



JET



IRIS



PEPPER