



THE SAMPLER

April 2017

The Final Touch

LACASSE

Office Furniture Solutions

A COLORFUL WORLD!

THERMOFUSED / HIGH PRESSURE LAMINATES

Wood grains and patterns



* Thermofused / High pressure laminates – Salta, Caramello, Mojave, Grigio, Karoo, Musta, Fossil and Totem are textured finishes.



Lacasse QuickShip Program

Several finishes, products, suggested layouts and accessories identified by this pictogram are part of the **Lacasse QuickShip Program**. Please refer to the current Lacasse Price Book for a complete list of available products and finishes as well as the QuickShip Program terms, conditions and limitations.

Groupe Lacasse's vast range of colors and finishes offer you an array of styles and combinations for a custom look every time. Coordinate elements of the same collection, match colors of various products or create your very own combination for a totally personalized look. Your imagination is your only guide as all our collections are designed to match together with harmony.

THERMOFUSED / HIGH PRESSURE LAMINATES AND METAL PAINT COLORS

Solid colors and matching metal paint colors



OTHER METAL PAINT COLORS (cont'd)

Standard palette



Warning: The colors shown are as exact as printing techniques will allow. Please request an actual color sample; available for any standard finish or color.

METAL PAINT COLORS

Trendy palette; add 10% to the list price



Handles/Pulls

Painted metal, plated metal, anodized aluminum or thermoplastic polymer.

| | | | QUAD | NEX | MORPHEO | OPTIONS | CONCEPT 3 | CONCEPT 70 | CONCEPT 400E | CONCEPT 300 | C.A. | PANGRAM | STAD OFFICE FURNITURE SYSTEM | C.I.T.É. OFFICE FURNITURE SYSTEM | QUORUM MULTICONFERENCE | LAMINATE LATERAL FILES | METAL STORAGE FURNITURE | THINK SMART | HARMONÍA |
|---|--------------|------------------------|------|-----|---------|---------|-----------|------------|--------------|-------------|------|---------|------------------------------|----------------------------------|------------------------|------------------------|-------------------------|-------------|----------|
| ARCADE A | | SILVER (ANTIBACTERIAL) | | | ✓ | | | | | | | | | | | | | | ✓ |
| | | ANTHRACITE GREY | | | ✓ | | | | | | | | | | | | ✓ | | |
| CURVED B | | SILVER | | | | ✓ | | | | | | | | | | | | | |
| | | ANTHRACITE GREY | | | | ✓ | | | | | | | | | | | | | |
| CUBIC C | | ANODIZED ALUMINUM | | | ✓ | | ✓ | | | | | | | | ✓ | ✓ | | | |
| | | ANTHRACITE GREY | | | ✓ | | | | | | | | | | ✓ | ✓ | | | |
| STRAIGHT D | | NICKEL | | | | | | | ✓ | | | | | | | | | | |
| | | ANTHRACITE GREY | | | | | | | ✓ | | | | | | | | | | |
| | | BRASS | | | | | | | ✓ | | | | | | | | | | |
| SQUARE E | | SILVER | | | | | | | ✓ | | ✓ | | | | | | | | ✓ |
| ROUND F | | SILVER | | | | | | | ✓ | | | | | | | | | | ✓ |
| LINEAR F | | PAINTED | | | | | | | | | | | | | | | | ✓ | |
| LINEAR H | | ANODIZED ALUMINUM | | | | | | | | | | | | | | | | | ✓ |
| CLASSIC K | | NICKEL | | | | | | ✓ | | | | | | | | | | | |
| | | ANTHRACITE GREY | | | | | | ✓ | | | | | | | | | | | |
| | | BRASS | | | | | | ✓ | | | | | | | | | | | |
| CLASSIC K | | SILVER | | | ✓ | | | | | | | | | | | ✓ | ✓ | | |
| | | ANTHRACITE GREY | | | ✓ | | | | | | | | | | | ✓ | ✓ | | |
| FULL L | | SILVER | | | | ✓ | | | | | | | | | | ✓ | | ✓ | |
| | | ANTHRACITE GREY | | | | ✓ | | | | | | | | | | ✓ | | ✓ | |
| | | BLACK | | | | | | | ✓ | | | | | | | | | | |
| NEX | | ANODIZED ALUMINUM | | ✓ | | | | | | | | | | | | | | | |
| QUAD C.I.T.É. METAL STORAGE FURNITURE (M) | W | WHITE | | | | | | | | | | | | ✓ | | | ✓ | | |
| | S (M) | SILVER | ✓ | | | | | | | | | | | ✓ | | | ✓ | | |
| | A (M) | ANTHRACITE GREY | ✓ | | | | | | | | | | | | | | ✓ | | |
| STAD P | | ANODIZED ALUMINUM | | | | | | | | | | | ✓ | | | | | | |
| SQUARE Q | | SILVER | | | | | | | | | | ✓ | | | | | | | ✓ |
| | | ANTHRACITE GREY | | | | | | | | | | ✓ | | | | | | | ✓ |
| RECESSED R | | UNPAINTED ALUMINUM | | | | | | | | | | | | | | | | ✓ | |
| D-SHAPE U | | NICKEL | | | | | | | | | | | | | | | | | ✓ |
| ROUND V | | SILVER | | | | | | | | | | ✓ | | | | | | | ✓ |
| | | ANTHRACITE GREY | | | | | | | | | | ✓ | | | | | | | ✓ |
| WATERFALL W | | SILVER | | | ✓ | | | | | | | | | | | ✓ | | | |
| | | ANTHRACITE GREY | | | ✓ | | | | | | | | | | | ✓ | | | |
| STAINLESS X | | STAINLESS STEEL | | | | | | | ✓ | | | | | | | | | | |
| ALUMINUM Y | | ANODIZED ALUMINUM | | | | | | | ✓ | | | | | | | | | | |
| STRAIGHT Z | | SILVER | | | ✓ | ✓ | | | | | | | | | | ✓ | ✓ | | |
| | | ANTHRACITE GREY | | | ✓ | ✓ | | | | | | | | | | ✓ | ✓ | | |

THE SAMPLER

Options

FRAMES

Door frames and modesty panels.



ALU ANODIZED ALUMINUM: Morpheo, Options, Concept 3, QUORUM MULTICONFERENCE and Think Smart



A ANTHRACITE GREY: Quad



S SILVER: Quad

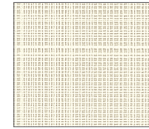
Translucent materials or perforated metal for screens, door frames and modesty panels.



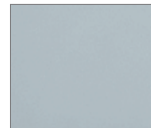
T TRANSLUCENT: Quad, Morpheo, Options, Concept 3, PanGram, Stad, C.I.T.E., QUORUM MULTICONFERENCE and Think Smart



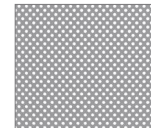
L LEXAN: Quad



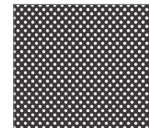
X MATRIX: Morpheo



Y TRANSLUCENT SKY: C.I.T.E.



S SILVER PAINTED PERFORATED METAL: Quad



A ANTHRACITE GREY PAINTED PERFORATED METAL: Quad

Solid wood angled legs



W20 WILD CHERRY: Stad



W21 TERRA CHERRY: Stad

FABRICS

Please consult the Lacasse, United Chair® and Arold standard collection upholstery cards for your choices of upholstery for chairs, soft seating, tackboards, screens and cushions.

EDGEBANDING

All edges on our laminate thermofused furniture are finished with thick ABS edgbanding (with the exception of thermoformed laminate components).

1" AND 1 1/2" (25 MM AND 38 MM) THICK TOPS



SMOOTH **N** EDGE

SMOOTH 1/8" (3 MM) THICK EDGE.

The **N** edge is **matched** with the wood grain, pattern and solid color finishes.

1" (25 mm) thick tops: Nex, Morpheo, Options, Concept 3, Concept 400E, Concept 300, C.A., PanGram, Stad, C.I.T.E., laminate lateral files, QUORUM MULTICONFERENCE training tables, Think Smart, Harmoniä and Metal Storage Furniture.

1 1/2" (38 mm) thick tops: Quad, Nex, Morpheo, Options, Concept 70, Stad, C.I.T.E., QUORUM MULTICONFERENCE conference/modular tables, Think Smart and Metal Storage Furniture.



SMOOTH SILVER **S** EDGE

SMOOTH 1/8" (3 MM) THICK EDGE.

The **S** edge is **Silver**.

1" (25 mm) thick tops: QUORUM MULTICONFERENCE training tables.

1 1/2" (38 mm) thick tops: QUORUM MULTICONFERENCE conference/modular tables.



TEXTURED **1** EDGE

TEXTURED 5/32" (4 MM) THICK EDGE.

The Textured **1** edge is **available and in matching color only when a wood grain is specified** for the top.

1 1/2" (38 mm) thick tops: Morpheo, Concept 70, QUORUM MULTICONFERENCE conference/modular tables and Think Smart.



TEXTURED **2** EDGE

TEXTURED 5/32" (4 MM) THICK EDGE.

The Textured **2** edge is **available and in matching color only when a wood grain is specified** for the top.

1 1/2" (38 mm) thick tops: Morpheo, Concept 70, QUORUM MULTICONFERENCE conference/modular tables and Think Smart.



K KNIFE EDGE

SMOOTH 1/8" (3 MM) THICK EDGE.

The **K** edge is **available and in matching color only when a wood grain is specified** for the top. (All wood grains as well as SNO Snow).

1 1/2" (38 mm) thick tops: Nex, C.I.T.E., QUORUM MULTICONFERENCE.



THERMOFORMED **3** EDGE

SEAMLESS EDGE.

The Thermoformed **3** edge is **available only for tops and drawer fronts in specific wood grains**; ERH, NTL, TWT as well as SNO Snow.

1" (25 mm) thick tops: Harmoniä bed side tables.

3/4" (19 mm) drawer fronts: Harmoniä storage units.

GROUPE
LACASSE

**APPLIED
ERGONOMICS**

Please make an appointment to visit us at:

3401 Madison Street
Skokie, IL 60076
www.appliedergonomics.com

Call us: (847) 679-5148
Toll-free: (844) 859-9247
Fax: (847) 933-0018

Email the President directly
jmeltzer@appliedergonomics.com