

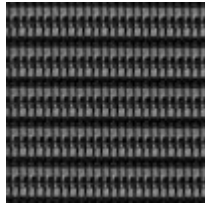
Humanscale Back Mesh Styles

M - Monofilament Stripe

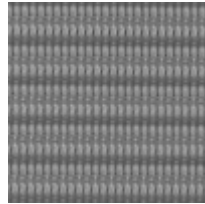
Using only monofilament yarns that are thin and strong, a simple but classic stripe pattern is achieved through weave structure and yarn placement. This pattern has slight elasticity but terrific memory.



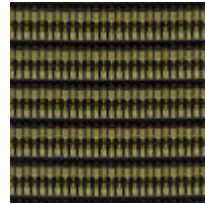
Black (M10)



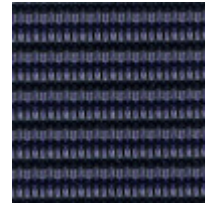
Carbon (M11)



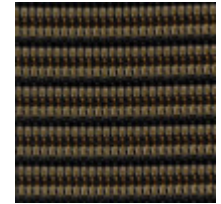
Platinum (M14)



Green (M41)



Atlantic (M51)



Amber (M81)

C - Silver Check

This unique translucent pattern is achieved using monofilament and a silver-plated yarn spun with polyester at its core. More than simply an aesthetic choice, the silver-plated yarn gives the textile flexibility and strength.



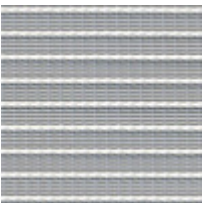
Alloy (C12)



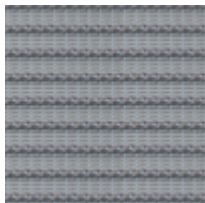
Topaz (C32)

N - Pinstripe

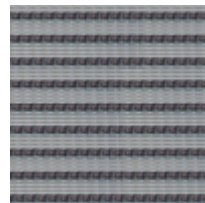
Designed specifically to work with the Diffrient World Chair, this lightweight fabric provides the strength and support of a much heavier mesh by using two different monofilament stretch yarns to provide proper support.



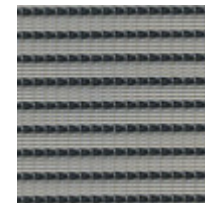
White (N01)



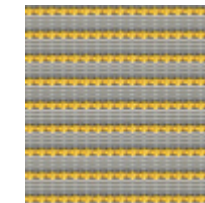
Silver (N02)



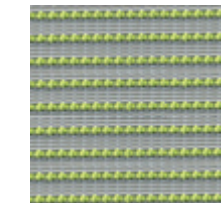
Graphite (N03)



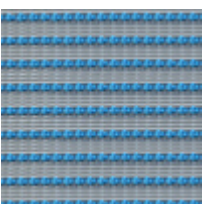
Black (N10)



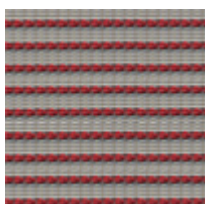
Cadmium Yellow (N34)



Citron (N43)



Cyan (N58)



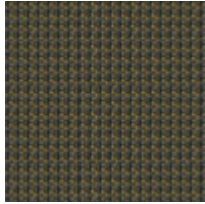
Crimson (N74)

J - Catena

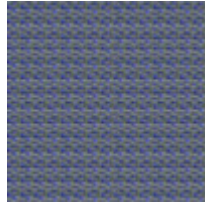
Catena's dense and rich hues are inspired by the vibrant spice markets of India. When used as a backrest textile, this proprietary non-stretch mesh provides a customized lumbar support through its tri-panel patented design that fits the user like a tailored shirt.



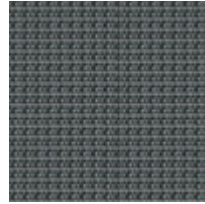
Black (J10)



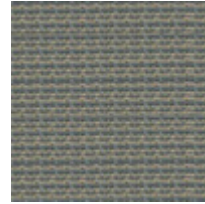
Bayberry (J35)



Cornflower (J50)



Poppy Seed (J1A)



Caraway (J1B)

A - Dash

Designed to resemble embroidery floss, Dash is stronger, more responsive, lighter weight and uses less material than most mesh textiles. It gives the user support, comfort and ease of movement, while meeting Humanscale's seating requirements.



Platinum (A14)



Zinc (A19)

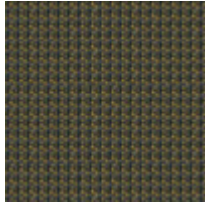
Humanscale Seat Mesh Textiles

J - Catena

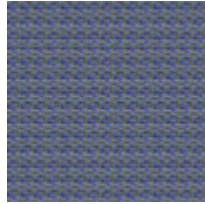
Catena's dense and rich hues are inspired by the vibrant spice markets of India. When used as a backrest textile, this proprietary non-stretch mesh provides a customized lumbar support through its tri-panel patented design that fits the user like a tailored shirt.



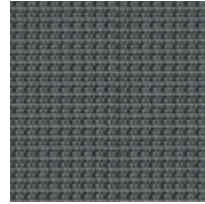
Black (J10)



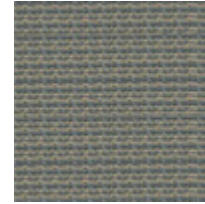
Bayberry (J35)



Cornflower (J50)



Poppy Seed (J1A)



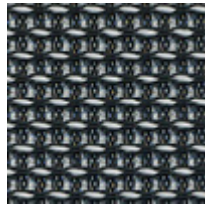
Caraway (J1B)

A - Dash

Designed to resemble embroidery floss, Dash is stronger, more responsive, lighter weight and uses less material than most mesh textiles. It gives the user support, comfort and ease of movement, while meeting Humanscale's seating requirements.



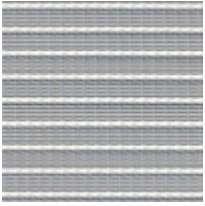
Platinum (A14)



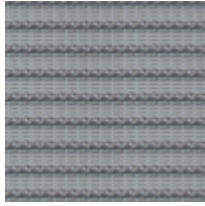
Zinc (A19)

N - Pinstripe

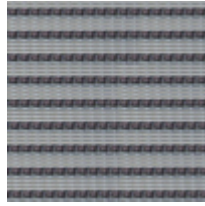
Designed specifically to work with the Diffrient World Chair, this lightweight fabric provides the strength and support of a much heavier mesh by using two different monofilament stretch yarns to provide proper support.



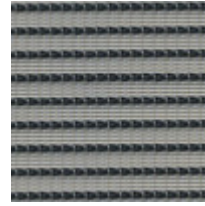
White (N01)



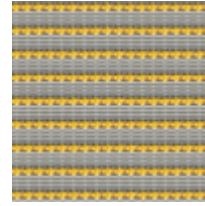
Silver (N02)



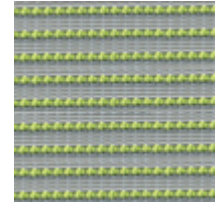
Graphite (N03)



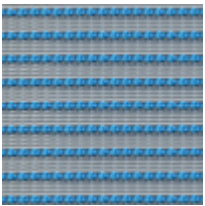
Black (N10)



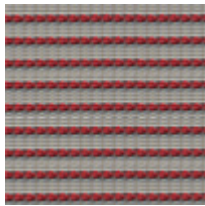
Cadmium Yellow
(N34)



Citron (N43)



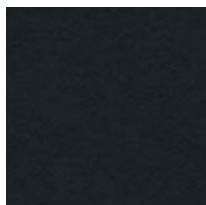
Cyan (N58))



Crimson (N74)

K - Lotus - (Textile Grade 1)

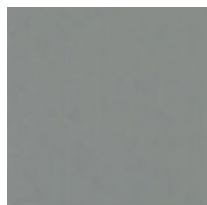
This four-way stretch textile is water repellent and easy to clean, making it an ideal textile for healthcare and hospitality environments. Its polyurethane finish with nylon backing boasts a soft texture while offering exceptional durability. It exceeds all standards for contract upholstery and healthcare tests.



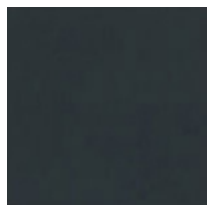
Black (K101)



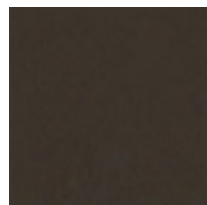
White (K128)



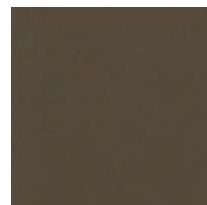
Shale (K158)



Hematite (K182)



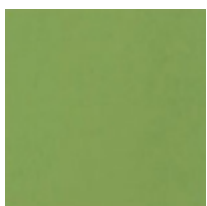
Walnut (K281)



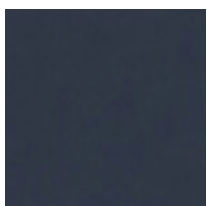
Umber (K2C4)



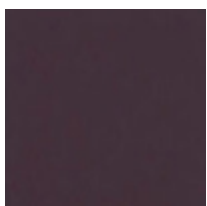
Ochre (K302)



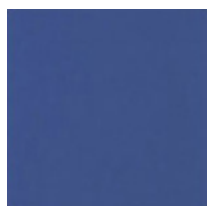
Verdant (K459)



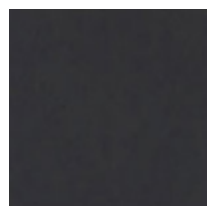
Navy (K507)



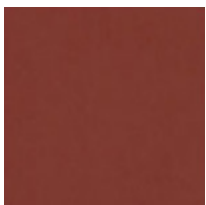
Plum (K603)



Crocus (K608)



Eggplant (K624)



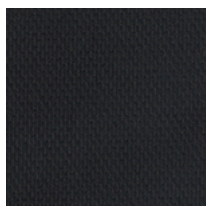
Earth Red (K757)



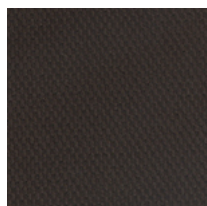
Lucky Red (K758)

CF - Corde 4 (Textile Grade 1)

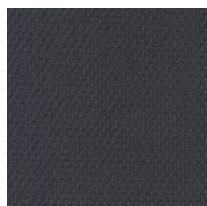
Designed with a four-way stretch, Corde 4 provides sitters with ultimate comfort as they adjust positions. Its intricate weave structure, dimensional surface and wide array of neutral and vibrant shades are visually appealing and engaging to the touch.



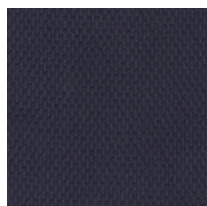
Black



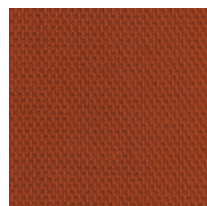
Dark Brown



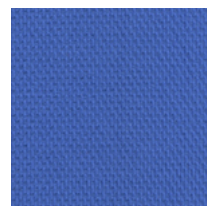
Graphite



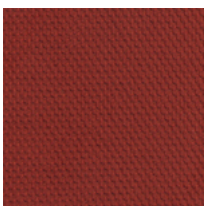
Navy



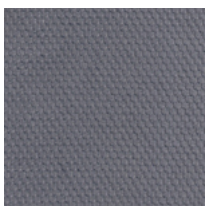
Pumpkin



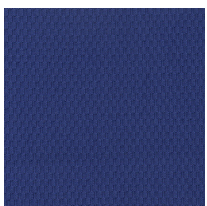
Azure



Parma Red



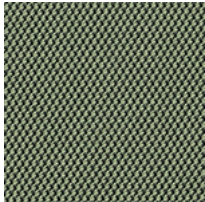
Medium Grey



Thalo

FT - Fourtis (Textile Grade 1)

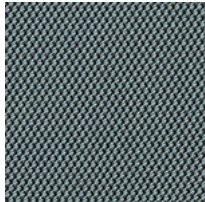
Designed with a four-way stretch, Fourtis conforms to our cushions for the ultimate in comfort and flexibility. While still adjustable, its satin crepe weave structure is highly durable and creates a strong, high performance fabric.



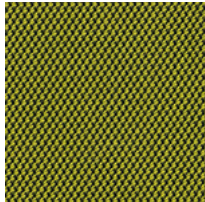
Ash



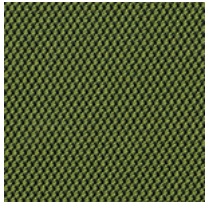
Granite



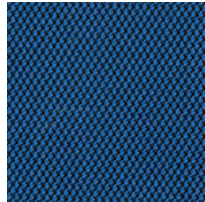
Nimbus



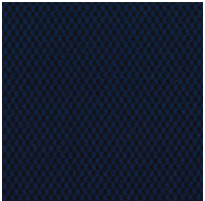
Alaria



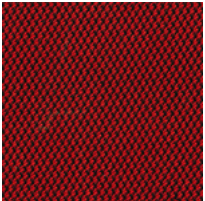
Clover



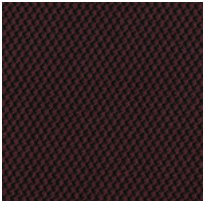
Hyacinth



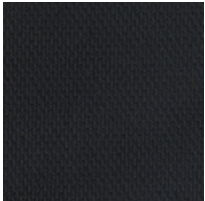
Navy



Winterberry



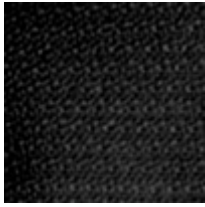
Boysenberry



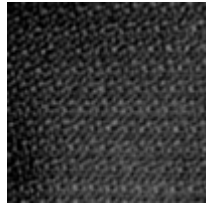
Black

F - Ginkgo (Textile Grade 2)

Composed of 90% Wool, Ginkgo offers a pleasing texture and durability. Its subtle and elegant pattern makes this textile appropriate for a variety of environments. Ginkgo comes in vibrant and saturated colors, expanding the scope of Humanscale's upholstery line.



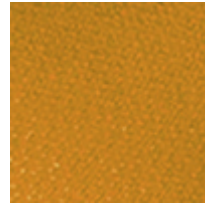
Black (F101)



Charcoal (F197)



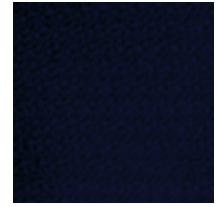
Walnut (F281)



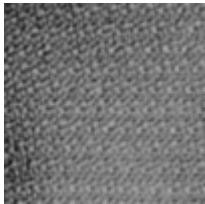
Wheat (F315)



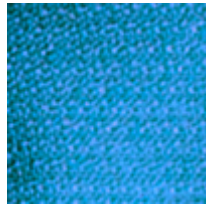
Green (F463)



Navy (F507)



Storm (F556)



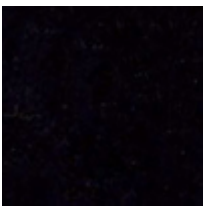
Horizon (F568)



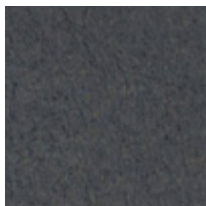
Harvest Orange
(F816)

D - Sensuede (Textile Grade 3)

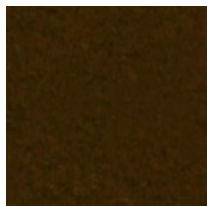
Sensuede was developed to be the best and most luxurious engineered suede available. The faux suede's soft touch comes from the use of breathable and wrinkle resistant recycled microfibers that are finer than a human hair but are extra-strong, resulting in a very resilient fabric. This material also was selected because of its environmentally sensitive content and manufacturing process.



Ebony (D111)



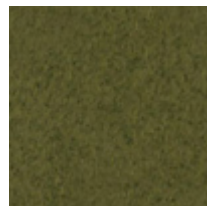
Pewter (D115)



Chocolate
(D208)



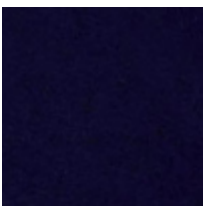
Goldenrod
(D305)



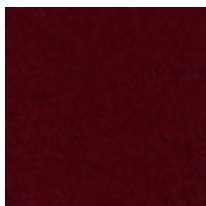
Olive (D406)



Pear (D411)



Persian (D517)



Oxblood (D712)



Please make an appointment to visit us at:
3401 Madison Street
Skokie, IL 60076
www.appliedergonomics.com

Call us: (847) 679-5148
Toll-free: (844) 859-9247
Fax: (847) 933-0018

Email the President directly
jmeltzer@appliedergonomics.com