

Humanscale Textiles

CF - Corde 4 (Textile Grade 1)

Designed with a four-way stretch, Corde 4 provides sitters with ultimate comfort as they adjust positions. Its intricate weave structure, dimensional surface and wide array of neutral and vibrant shades are visually appealing and engaging to the touch.



Black



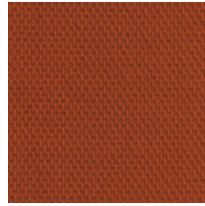
Dark Brown



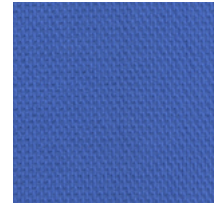
Graphite



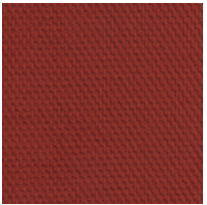
Navy



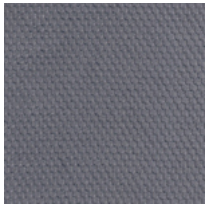
Pumpkin



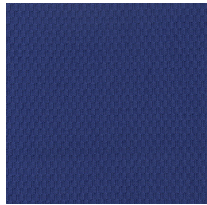
Azure



Parma Red



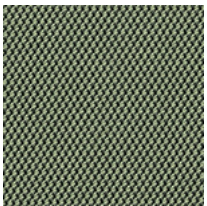
Medium Grey



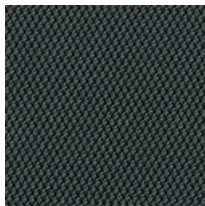
Thalo

FT - Fourtis (Textile Grade 1)

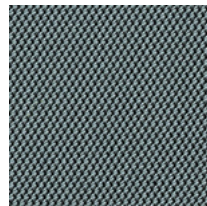
Designed with a four-way stretch, Fourtis conforms to our cushions for the ultimate in comfort and flexibility. While still adjustable, its satin crepe weave structure is highly durable and creates a strong, high performance fabric.



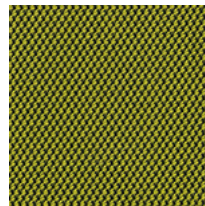
Ash



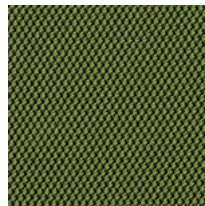
Granite



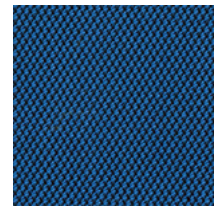
Nimbus



Alaria



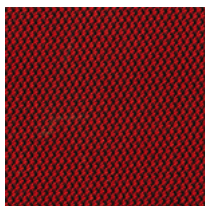
Clover



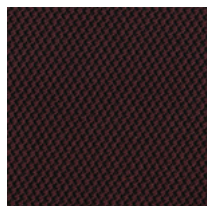
Hyacinth



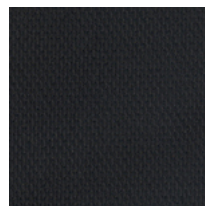
Navy



Winterberry



Boysenberry



Black

K - Lotus - (Textile Grade 1)

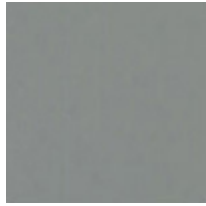
This four-way stretch textile is water repellent and easy to clean, making it an ideal textile for healthcare and hospitality environments. Its polyurethane finish with nylon backing boasts a soft texture while offering exceptional durability. It exceeds all standards for contract upholstery and healthcare tests.



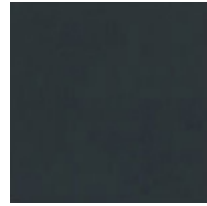
Black (K101)



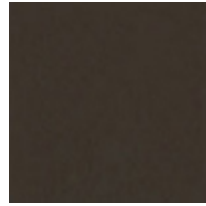
White (K128)



Shale (K158)



Hematite (K182)



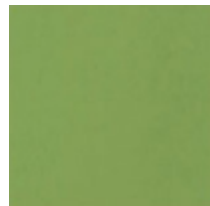
Walnut (K281)



Umber (K2C4)



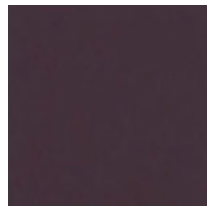
Ochre (K302)



Verdant (K459)



Navy (K507)



Plum (K603)



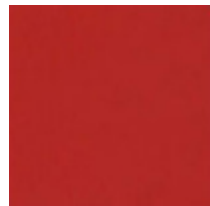
Crocus (K608)



Eggplant (K624)



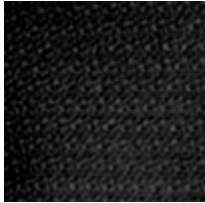
Earth Red (K757)



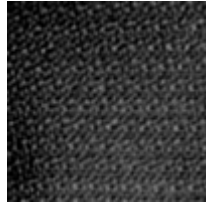
Lucky Red (K758)

F - Ginkgo (Textile Grade 2)

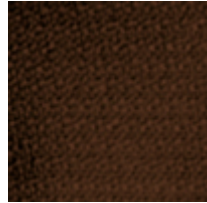
Composed of 90% Wool, Ginkgo offers a pleasing texture and durability. Its subtle and elegant pattern makes this textile appropriate for a variety of environments. Ginkgo comes in vibrant and saturated colors, expanding the scope of Humanscale's upholstery line.



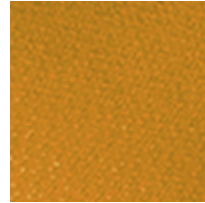
Black (F101)



Charcoal (F197)



Walnut (F281)



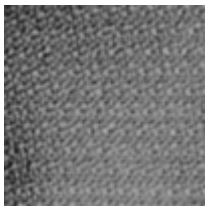
Wheat (F315)



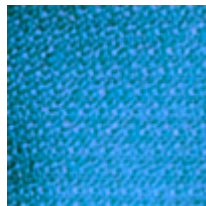
Green (F463)



Navy (F507)



Storm (F556)



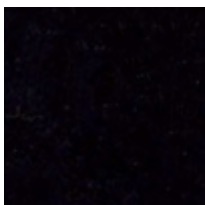
Horizon (F568)



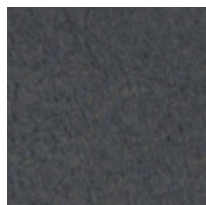
Harvest Orange
(F816)

D - Sensuede (Textile Grade 3)

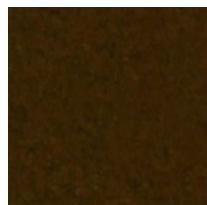
Sensuede was developed to be the best and most luxurious engineered suede available. The faux suede's soft touch comes from the use of breathable and wrinkle resistant recycled microfibers that are finer than a human hair but are extra-strong, resulting in a very resilient fabric. This material also was selected because of its environmentally sensitive content and manufacturing process.



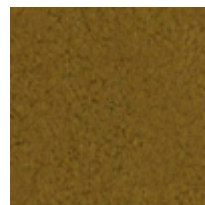
Ebony (D111)



Pewter (D115)



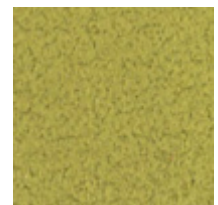
Chocolate
(D208)



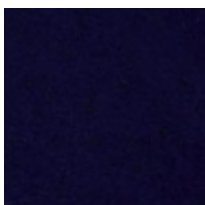
Goldenrod
(D305)



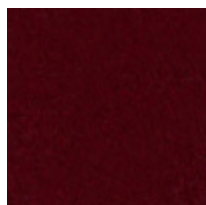
Olive (D406)



Pear (D411)



Persian (D517)



Oxblood (D712)

TL - Ticino (Chrome-Free Leather Grade 1)

Ticino is a semi-aniline dyed leather available in a variety of rich colors inspired by nature. It is a top, corrected grain leather to create a more natural aesthetic and ensure the leather remains as unique as the hide itself.



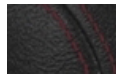
Obsidian /
Noir



Obsidian /
Vanilla



Obsidian /
Blue



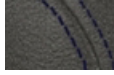
Obsidian /
Red



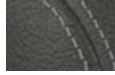
Umber /
Cocoa



Canyon /
Coffee



Charcoal /
Midnight



Charcoal /
Light Grey



Pebble /
Light Grey



Sand /
Vanilla



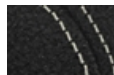
Glacier /
White

CL - Corvara (Chrome-Free Leather Grade 3)

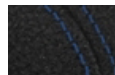
Corvara is a semi-aniline dyed leather that offers a smooth, silky feel and ultimate durability. It is a top, full grain leather that is embossed lightly for a consistent, uniform grain structure.



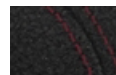
Onyx /
Noir



Onyx /
Vanilla



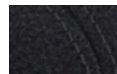
Onyx /
Blue



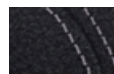
Onyx /
Red



Java /
Cocoa



Midnight /
Noir



Midnight /
Light Grey



Jasper /
Cherry



Saddle /
Tan



Mineral /
Vanilla



Please make an appointment to visit us at:
3401 Madison Street
Skokie, IL 60076
www.appliedergonomics.com

Call us: (847) 679-5148
Toll-free: (844) 859-9247
Fax: (847) 933-0018

Email the President directly
jmeltzer@appliedergonomics.com