

Fresh Possibilities

Fabric for spaces that are beyond the ordinary.

Indiana
FURNITURE

Stinson®

Interactive Samples

Click on the image to order a memo sample.



Square One
64856 Fleece



64862 Skyway



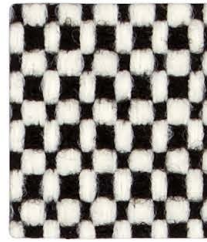
64861 Grasshopper



64853 Oak



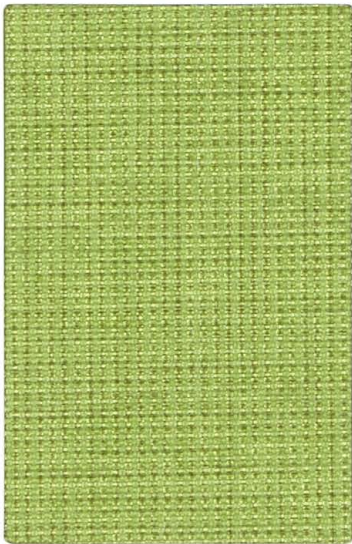
64858 Dolphin



64854 Black & White



64852 Glow



Aerie
AIE 63 Key Lime



AIE 62 Dew



AIE 66 Frosted



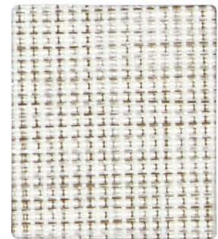
AIE 68 Ablaze



AIE 70 Ink



AIE 69 Pewter



AIE 61 White Cap



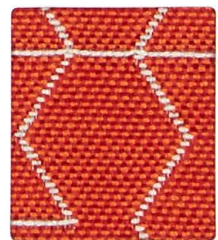
Tangram
64881 Key Lime



64889 Denim



64880 Parchment



64882 Guava



64886 Grotto



64888 Slate



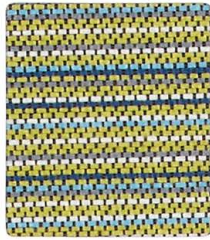
64887 Flax

Interactive Samples

Click on the image to order a memo sample.



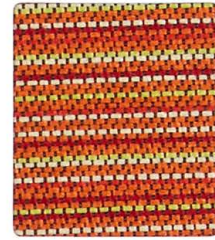
Lateral
64843 Calypso



64841 Citrine



64842 Horizon



64845 Papaya



64844 Sterling



64840 Mist



64847 Sangria



Riddle
64120 Iris



64121 Frost



64125 Chalkboard



64119 Malt



64124 Surf



64122 Citron



64118 Siren



Artisan
65074 Seaport



65073 Marlin



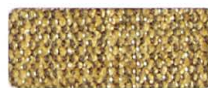
65075 Fossil



65067 Chiffon



65077 Brook



65068 Anjou



65071 Quill



65070 Tungsten



65072 Valley



65079 Moody



65082 Darth



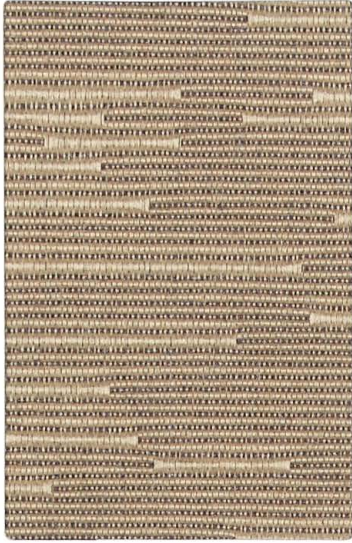
65069 London



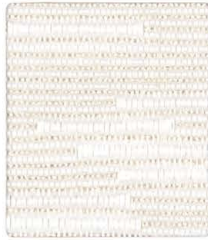
65078 Hearth

Interactive Samples

Click on the image to order a memo sample.



Nikko
NIK 88 Beach



NIK 89 Frost



NIK 90 Chill



NIK 91 Aspen



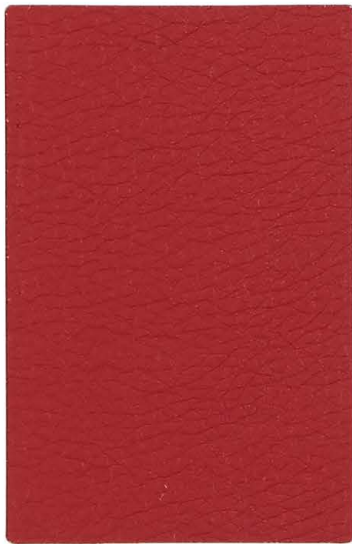
NIK 92 Blonde



NIK 93 Shark



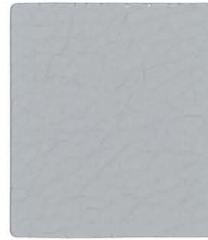
NIK 88 Beach



Staple
STP 67 Fire



STP 64 Camel



STP 66 Mist



STP 65 Smith



STP 63 Malt



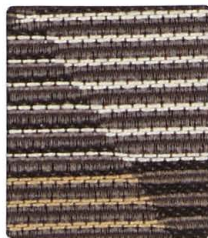
STP 68 Morel



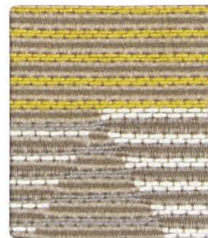
STP 74 Nautical



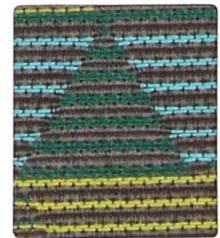
Euclid
64923 Tart



64922 Alpaca



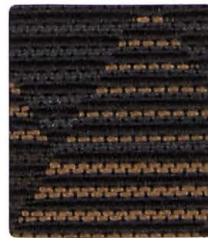
64921 Yarrow



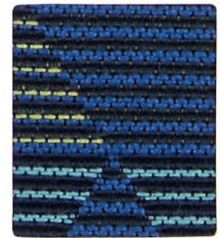
64924 Parrot



64926 Razzle



64925 Charred



64920 Cobalt

Specifications

Pattern	Grade	Content	Finish	Abrasion Resistance	Cleaning Code
Aerie	3	49% Post Industrial Recycled Polyester, 38% Post Consumer Recycled Polyester, 13% Polyester	N/A	N/A	W-S
Artisan	3	100% Polyester	Enhanced Soil and Stain Protection	100,000 D.R.	W-S
Euclid	3	45% Polyester, 35% Post Industrial Recycled Polyester, 20% Post Consumer Recycled Polyester	Non-PFOA Stain Resistant	51,000 D.R.	W-S Bleach Cleanable
Lateral	2	65% Post Consumer Recycled Polyester, 35% Polyester	GreenShield® patented, nano-particle based, reduced environmental impact soil and stain protection	120,000 D.R.	W-S Bleach Cleanable
Nikko	3	51% Post Industrial Recycled Polyester, 49% Post Consumer Recycled Polyester	N/A	N/A	W-S
Riddle	3	100% Polyester	Non-PFOA Stain Resistant	60,000 D.R.	W-S Bleach Cleanable
Square One	3	63% Polyester, 37% Olefin	Non-PFOA Stain Resistant	87,000 D.R.	W-S Bleach Cleanable
Staple	2	Polyurethane made with Polycarbonate and Polyester resins	N/A	200,000 D.R.	W-S Bleach Cleanable
Tangram	4	74% Polyester, 17% Post Industrial Recycled Polyester, 9% Post Consumer Recycled Polyester	Non-PFOA Stain Resistant	51,000 D.R.	W-S Bleach Cleanable

Dye lots may vary slightly from samples shown.

Aerie and Nikko are intended for vertical surface applications.

Flammability*:

All patterns shown pass California Bulletin 117-2013, Section 1, UFAC - Class 1, and NFPA 260 - Class 1. In addition, Aerie and Nikko pass ASTM E84 Unadhered.

*This term and any corresponding data refer to typical performance in the tests indicated and should not be construed to imply the behavior of this or any other material under actual fire conditions.



REDUCED ENVIRONMENTAL IMPACT

These patterns are produced using a minimum of 50% recycled fiber.



The following patterns are GREENGUARD Gold Certified:

Aerie, Artisan, Euclid, Lateral, Nikko, Riddle, Square One, and Tangram.

Stinson
SEE / SAMPLE / SPEC

Visit the Stinson See/Sample/Spec sample room at indianafurniture.com to view all Stinson patterns with their respective Indiana Furniture grades. Order memo samples directly from the site, or contact Indiana Furniture Customer Service. To contact CF Stinson, LLC directly, please call 800.841.6279 or visit cfstinson.com.

Please make an appointment to visit us at:
3401 Madison Street
Skokie, IL 60076
www.appliedergonomics.com

Call us
Tel: (847) 679-5148
(844) 859-9247
Fax: (847) 933-0018

Email the President directly
jmeltzer@appliedergonomics.com

