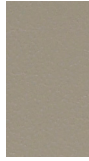


Lasting Favorites

The materials you want when endurance matters.



ENDURANCE EPU IVORY



GULL



SMITH



TAUPE



NEPTUNE



SEED



ARMOR



GRAVEL



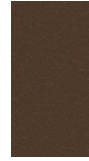
HEATHER



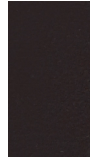
PAPRIKA



INK



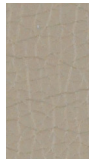
JAVA



NOIR



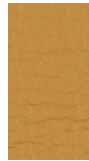
CANTER EPU SAND



QUARRY



SAFARI



SADDLE



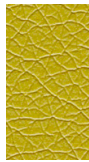
NIMBUS



EARTH



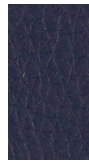
IRON



KIWI GREEN



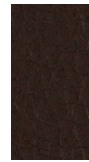
BALLAD



NIGHT



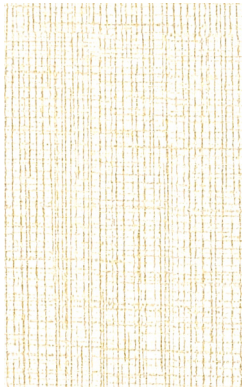
SUMAC



SABLE



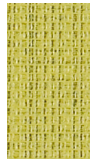
ONYX



BEELINE EPU CANVAS



OAT



SPROUT



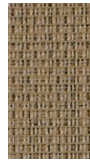
GEYSER



NIMBUS



TIDAL



PORTOBELLO



FOSSIL



CORK



ORIOLE



FORGE



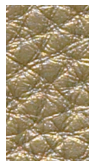
WALNUT



ECLIPSE



BRAVO II DRIFTWOOD



HEMATITE



TWILIGHT



GRAYSTONE



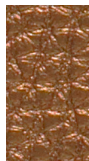
DUSK



CINDER



IRON



COPPER



OUTBACK



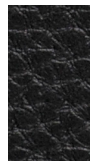
SADDLE



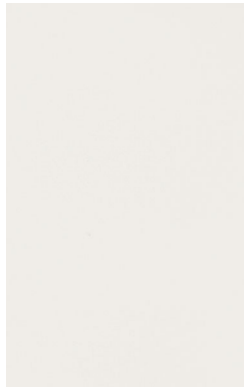
MICA



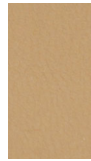
NIGHT



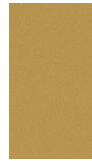
BLACK



SILICA CUMULUS



BROWNSTONE



GINGER



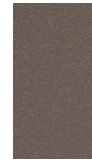
AQUA



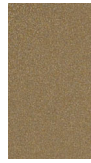
APPLETINI



TROPIC



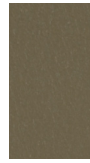
ALLOY



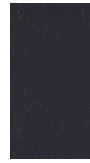
QUARTZ



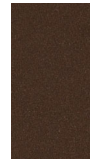
MARIGOLD



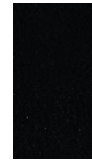
SKETCH



GALLANT



TERRA



NERO



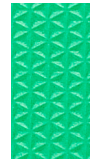
SILICA TRIAD IVORY



LUSTER



ZING



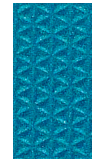
JULEP



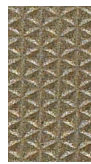
BRUT



HEAT



CREST



SETTLE



SMOKE



SONAR



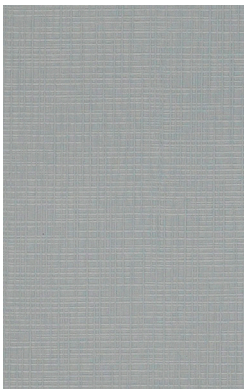
BREW



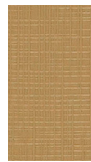
MOOD



SUIT



SILICA ETCH WISTFUL



DOE



SAGE



JUNIPER



RAIN



MANTA



NICKEL



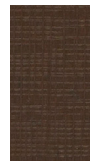
WETSTONE



FRENCH



INK



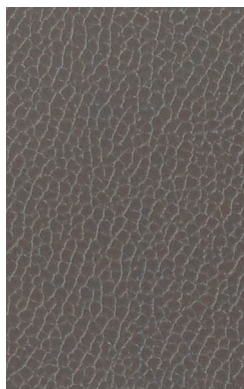
MINK



CHAMBORD



SLATE



SILICA LEATHER PEWTER



ALMOND



BARLEY



DOVE



SADDLE



DRIFTWOOD



SHADOW



LICHEN



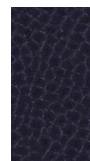
EARTHEN



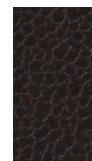
MINK



UMBER



INK



ECLIPSE

TECHNICAL INFORMATION

54" Pattern	Fiber Content & Backing	Abrasion (D.R.)	Light-fastness	Approx. Repeats	Cleaning Code	+Grades
BEELINE EPU ☘ ☒ ☀ ☘ ☘*	100% EPU Polyurethane Polyester Backing	900,000	200 Hrs. Class 4		W Bleach Cleanable (4:1)	3
BRAVO II ☘ ☒ ☀ ☘ ☘*	100% Polyurethane/PVC Free Polyester Backing	500,000	200 Hrs. Class 4.5		W Bleach Cleanable (4:1)	4
CANTER EPU ☘ ☒ ☀ ☘ ☘*	100% EPU Polyurethane Polyester Backing	1,000,000	200 Hrs. Class 4		W Bleach Cleanable (4:1)	3
ENDURANCE EPU ☘ ☒ ☀ ☘ ☘*	100% EPU Polyurethane Polyester Backing	1,000,000	200 Hrs. Class 4		W Bleach Cleanable (4:1)	3
SILICA ☘ ☒ ☀ ☘ ☘*	100% Silicone Polyester Backing	365,000	200 Hrs. Class 4.5		WS Bleach Cleanable (4:1)	6
SILICA ETCH ☘ ☒ ☀ ☘ ☘*	100% Silicone Polyester Backing	270,000	200 Hrs. Class 4.5		WS Bleach Cleanable (4:1)	6
SILICA LEATHER ☘ ☒ ☀ ☘ ☘*	100% Silicone Polyester Backing	210,000	200 Hrs. Class 4		WS Bleach Cleanable (4:1)	6
SILICA TRAUD ☘ ☒ ☀ ☘ ☘*	100% Silicone Polyester Backing	200,000	200 Hrs. Class 4.5	1/8" L, 1/4" W	WS Bleach Cleanable (4:1)	6

*ACT® Registered Certification Marks

+Grades provided are based on August 2018 price list.



GREENGUARD Gold Certified. CA Section 01350 compliant. Eligible for CHPS Low-Emitting Material Credits.



In 5 simple clicks, you can find hundreds of pre-approved, in grade, and in stock fabrics.

All Momentum fabrics are made with recycled or natural fibers. All products are PVC free and GREENGUARD certified.