

# Indiana

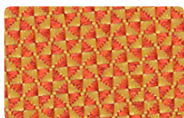
FURNITURE

**ALIGN**COORDINATES

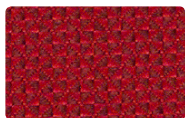
---



**MAYER**FABRICS



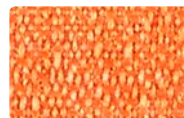
**QUATTRO**  
300-019 Golden Orange



**QUATTRO**  
300-001 Deep Crimson



**PATIO**  
420-002 Sunshine



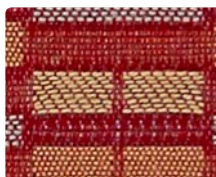
**CONTINUUM**  
422-009 Mandarin



**CONTINUUM**  
422-019 Brick



**ALIGN**  
398-009 Fruit Punch



**PATIO**  
420-001 Sangria



**ALIGN**  
398-001 Cardinal



**PATIO**  
420-009 Coral Reef



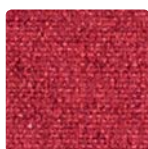
**CONTINUUM**  
422-001 Lipstick



**CONTINUUM**  
422-008 Beet



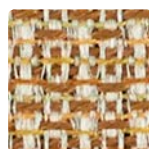
**FEDORA**  
621-019 Tangelo



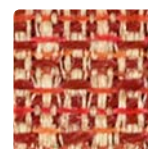
**FEDORA**  
621-001 Ruby



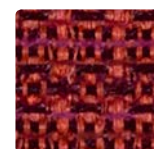
**FEDORA**  
621-008 Plum



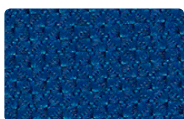
**VALET**  
399-002 Chamois



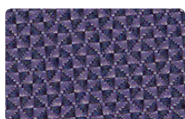
**VALET**  
399-009 Amber



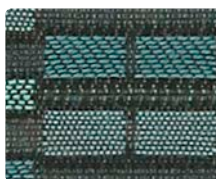
**VALET**  
399-001 Rouge



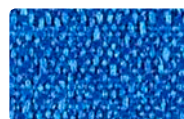
**QUATTRO**  
300-014 Skyway



**QUATTRO**  
300-004 Midnight Blue



**PATIO**  
420-024 Aquatint



**CONTINUUM**  
422-014 Electric



**CONTINUUM**  
422-004 Indigo



**ALIGN**  
398-004 Tattoo



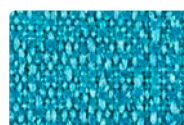
**PATIO**  
420-004 Oceanic



**ALIGN**  
398-014 Moody Blue



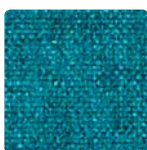
**PATIO**  
420-014 Mediterranean



**CONTINUUM**  
422-044 Ocean



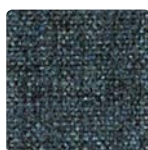
**CONTINUUM**  
422-024 Caribbean



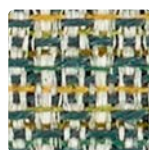
**FEDORA**  
621-053 Aegean



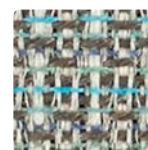
**FEDORA**  
621-014 Indigo



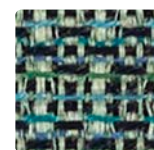
**FEDORA**  
621-004 Midnight



**VALET**  
399-013 Jadeite

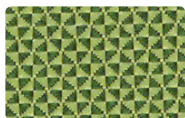


**VALET**  
399-026 Aquatint

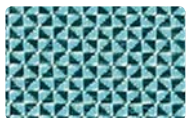


**VALET**  
399-004 Oceanic

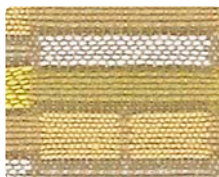
Additional colors are available. Please refer to the Mayer Fabrics website.



**QUATTRO**  
300-003 Spring Green



**QUATTRO**  
300-023 Mallard



**PATIO**  
420-013 Citron



**CONTINUUM**  
422-003 Spring



**CONTINUUM**  
422-013 Emerald



**ALIGN**  
398-003 Limeade



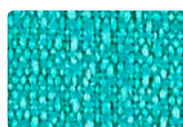
**PATIO**  
420-003 Jungle



**ALIGN**  
398-013 Oasis



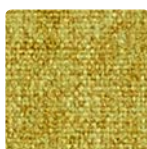
**PATIO**  
420-010 Sea Salt



**CONTINUUM**  
422-034 Turquoise



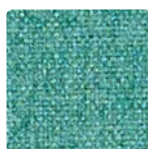
**CONTINUUM**  
422-033 Pine



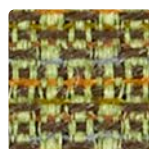
**FEDORA**  
621-013 Citron



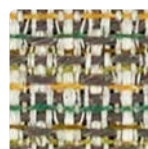
**FEDORA**  
621-033 Opal



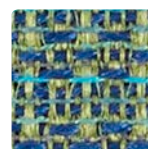
**FEDORA**  
621-043 Aquamarine



**VALET**  
399-003 Jungle



**VALET**  
399-030 Cypress



**VALET**  
399-014 Oasis



**QUATTRO**  
300-000 Honeycomb



**QUATTRO**  
300-006 Granite



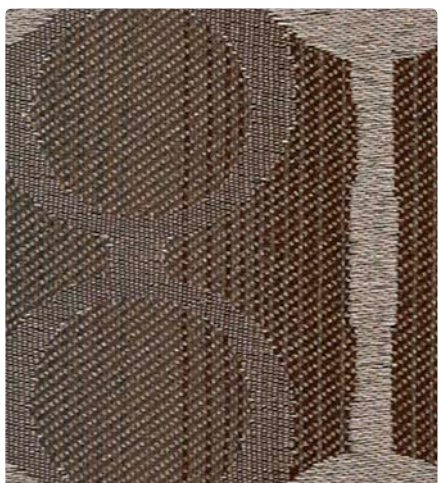
**PATIO**  
420-007 Vellum



**CONTINUUM**  
422-007 Cafe Au Lait



**CONTINUUM**  
422-036 Iron



**ALIGN**  
398-006 Java



**PATIO**  
420-000 Basket



**ALIGN**  
398-007 Sea Salt



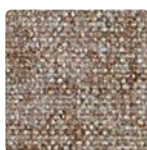
**PATIO**  
420-006 Slate



**CONTINUUM**  
422-000 Espresso



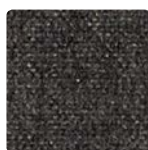
**CONTINUUM**  
422-006 Onyx



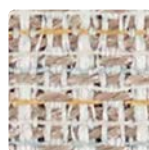
**FEDORA**  
621-017 Fawn



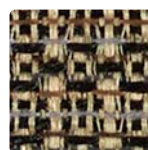
**FEDORA**  
621-036 Dapper



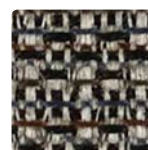
**FEDORA**  
621-006 Bitumen



**VALET**  
399-007 Pearl



**VALET**  
399-020 Truffle



**VALET**  
399-006 Sultry

Additional colors are available. Please refer to the Mayer Fabrics website.

# TECHNICAL INFORMATION

## Align Seating Coordinates

Pattern 54"	Content and Backing	Certifications	Weight/ Linear Yd.	Pattern Repeat	Finish	Abrasion Wyzenbeek	Light-Fastness	Flammability	Cleaning Code	Grade
<b>ALIGN</b> <i>Directional Railroaded</i>	100% Polyester Backing: Acrylic	GREENGUARD Gold	15.392 oz.	3.625" H, 4.375" V	Stain Repellent	60,000 Double Rubs	40 hours	Cal. 117-2013 NFPA 260/UFAC Class 1	WS, BC	2
<b>CONTINUUM</b> <i>Directional</i>	100% Post-Consumer Recycled Polyester Backing: Latex	GREENGUARD Gold	15 oz.	0.50" H, 0.59" V	Stain Repellent	130,000^ Double Rubs	40 hours	Cal. 117-2013 NFPA 260/UFAC Class 1 ASTM E84 (Unadhered) Class 1 or A	WS	2
<b>FEDORA</b> <i>Directional</i>	100% Polyester Backing: Polyester Knit	GREENGUARD Gold	17.2 oz.	None	Stain Repellent- PFOA Free	100,000 Double Rubs	40 hours	Cal. 117-2013 NFPA 260/UFAC Class 1 ASTM E84 (Unadhered) Class 1 or A	W	2
<b>PATIO</b> <i>Directional</i>	100% Polyester Backing: Acrylic	GREENGUARD Gold	15.504 oz.	1.875" H, 1.25" V	Stain Repellent	51,000 Double Rubs	40 hours	Cal. 117-2013 NFPA 260/UFAC Class 1	WS, Bleach Cleanable	2
<b>QUATTRO</b> <i>Directional</i>	100% Polyester Backing: Acrylic	GREENGUARD Gold	13.06 oz.	Non- Matching	Stain Repellent	237,000^ Double Rubs	40 hours	Cal. 117-2013 NFPA 260/UFAC Class 1 ASTM E84 (Unadhered) Class 1 or A IMO A.652(16) 8.2	S	1
<b>VALET</b> <i>Directional</i>	100% Polyester Backing: Acrylic	GREENGUARD Gold	14.912 oz.	0.063" H, 1.818" V	Stain Repellent	51,000 Double Rubs	40 hours	Cal. 117-2013 NFPA 260/UFAC Class 1	WS, Bleach Cleanable	2

### REDUCED ENVIRONMENTAL IMPACT

These products are GREENGUARD Gold Certified for low chemical and particle emissions to UL standard UL 2818 and may contribute to LEED certification. For complete information visit [mayerfabrics.com](http://mayerfabrics.com) and [UL.com/gg](http://UL.com/gg).

### Continuum



### CARE AND CLEANING INFORMATION

S: Solvent      W: Water-Based Cleaner      WS: Water/Solvent Cleaner

Bleach Cleanable – 1 part bleach, 9 parts water = 10% bleach, 90% water solution. Do not clean/disinfect fabric for longer than 10 minutes using the 10% bleach solution. Always rinse promptly with clean water after applying the bleach solution. Failure to do so will void any and all warranties.

### ADDITIONAL INFORMATION

**CAL TB 133:** All patterns may comply with California Technical Bulletin 133 when combined with appropriate components.

**^Abrasion:** Multiple factors affect fabric durability and appearance retention, including end-user application and proper maintenance. Wyzenbeek results above 100,000 double rubs have not been shown to be a reliable indicator of increased fabric lifespan.

**Custom Capabilities:** All patterns can be custom colored. Minimum yardage applies.

**Digital Swatch Card Color Matching:** Due to color variations on different monitors and color printers, actual swatch colors may vary slightly. Please request a memo sample from Mayer Fabrics to ensure proper color representation.

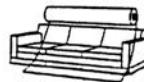
**Specifications:** Specifications are correct at the time of printing. Additional specifications are available on our website.



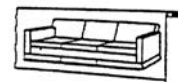
These fabrics meet or exceed these ACT performance guidelines. \*Certification Marks owned by ACT\*



**Railroaded:** This feature allows reduction of seams and enables smoother furniture tailoring.



Fabric "up the roll" or "regular" position

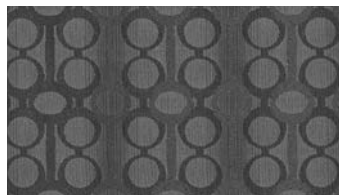


Fabric "railroaded" or "top selvage" position

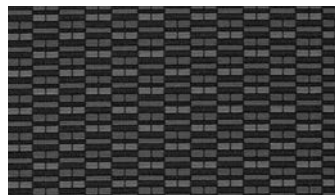
We recommend all railroaded patterns should be upholstered as shown on card.

### Continuum, Quattro

**UL** This 100% polyester fabric is included in the Underwriter's Laboratory Fabric Recognition Program. Additional testing of this U.L. recognized component is not required on approved panels from participating manufacturers.



ALIGN – Repeat: 3.625" H, 4.375" V  
Shown Railroaded



PATIO – Repeat: 1.875" H, 1.25" V