

# Indiana

FURNITURE

**RENEWAL**COORDINATES

---



**MAYER**FABRICS



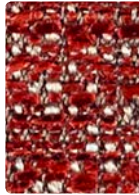
**VIPASSANA**  
439-001 Fire



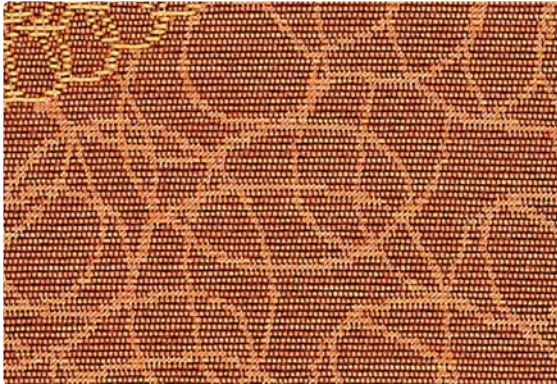
**ODESSA**  
624-002 Marigold



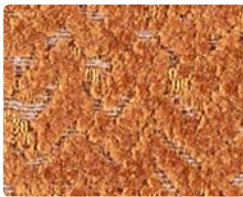
**ODESSA**  
624-009 Mandarin



**ODESSA**  
624-001 Ruby



**LOTUS**  
442-009 Spice



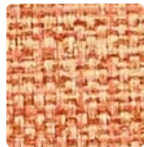
**MARMARA**  
625-009 Spice



**MARMARA**  
625-001 Garnet



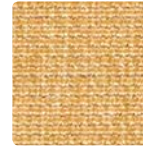
**MINGLE**  
MG-002 Straw



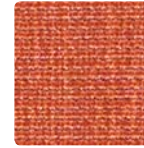
**MINGLE**  
MG-009 Melon



**MINGLE**  
MG-001 Rouge



**ESSENCE**  
ES-002 Sunray



**ESSENCE**  
ES-009 Persimmon



**ESSENCE**  
ES-001 Port



**EPHEBUS**  
623-002 Topaz



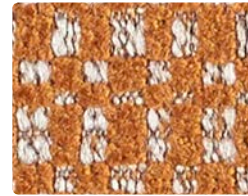
**EPHEBUS**  
623-009 Spice



**SUNA**  
437-001 Vermillion



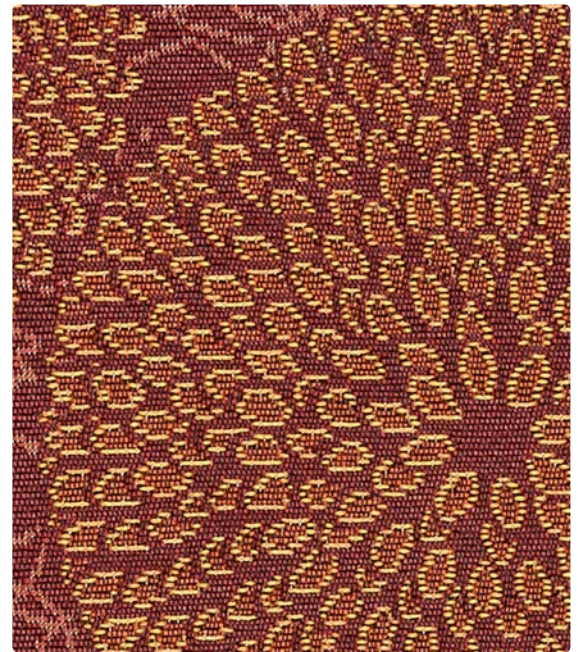
**EPHEBUS**  
623-001 Garnet



**ANKARA**  
622-019 Spice



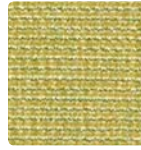
**ANKARA**  
622-001 Garnet



**LOTUS**  
442-001 Currant



**VIPASSANA**  
439-003 Pear



**ESSENCE**  
ES-013 Citron



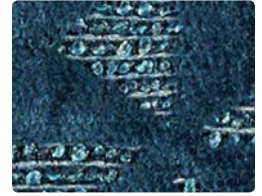
**ESSENCE**  
ES-023 Sea



**ESSENCE**  
ES-004 Ink



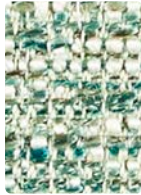
**EPHEBUS**  
623-023 Citron



**EPHEBUS**  
623-014 Ink



**ODESSA**  
624-003 Grass



**ODESSA**  
624-013 Sea



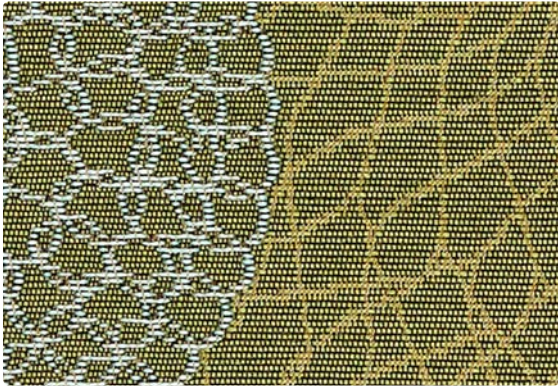
**ODESSA**  
624-004 Indigo



**SUNA**  
437-003 Leaf



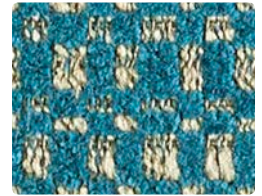
**SUNA**  
437-014 Niagara



**LOTUS**  
442-003 Moss



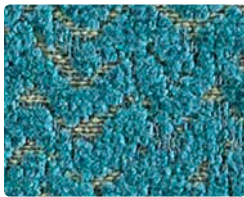
**ANKARA**  
622-023 Citron



**ANKARA**  
622-014 Aegean



**MARMARA**  
625-013 Grass



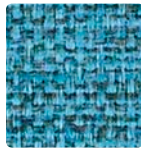
**MARMARA**  
625-014 Aegean



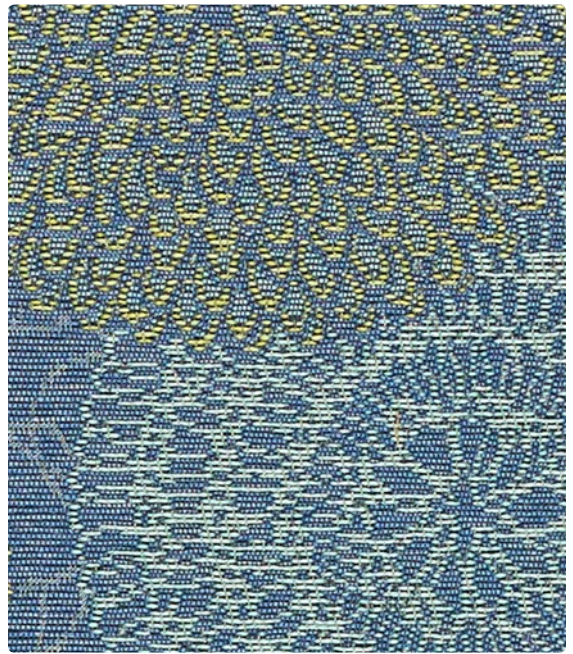
**MINGLE**  
MG-003 Aloe



**MINGLE**  
MG-023 Turquoise



**MINGLE**  
MG-014 Sky



**LOTUS**  
442-014 Sea



**VIPASSANA**  
439-000 Teak



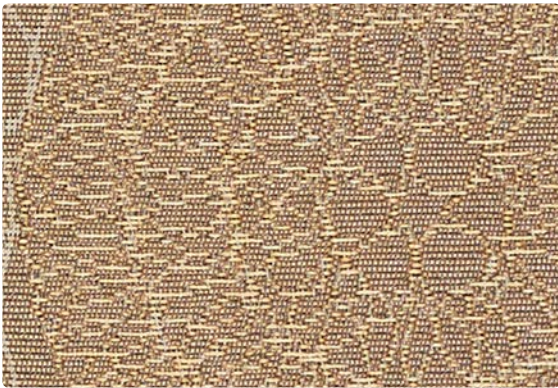
**ODESSA**  
624-007 Oyster



**ODESSA**  
624-000 Bark



**ODESSA**  
624-006 Gravel



**LOTUS**  
442-007 Stone



**MARMARA**  
625-000 Mocha



**MARMARA**  
625-006 Onyx



**MINGLE**  
MG-026 Cloud



**MINGLE**  
MG-010 Latte



**MINGLE**  
MG-006 Charcoal



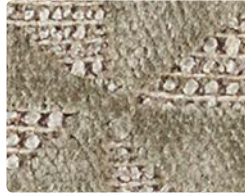
**ESSENCE**  
ES-017 Stone



**ESSENCE**  
ES-000 Cocoa



**ESSENCE**  
ES-006 Charcoal



**EPHEBUS**  
623-007 Stone



**EPHEBUS**  
623-000 Mocha



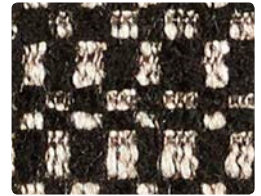
**SUNA**  
437-006 Coal



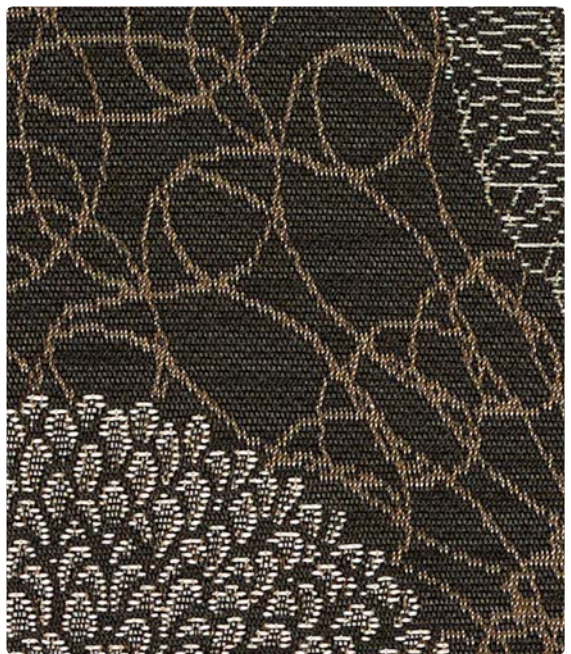
**EPHEBUS**  
623-006 Onyx



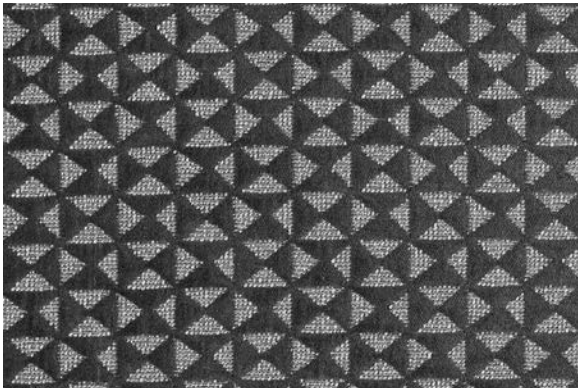
**ANKARA**  
622-000 Mocha



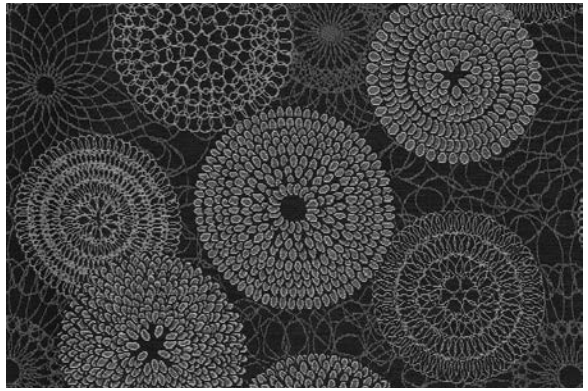
**ANKARA**  
622-006 Onyx



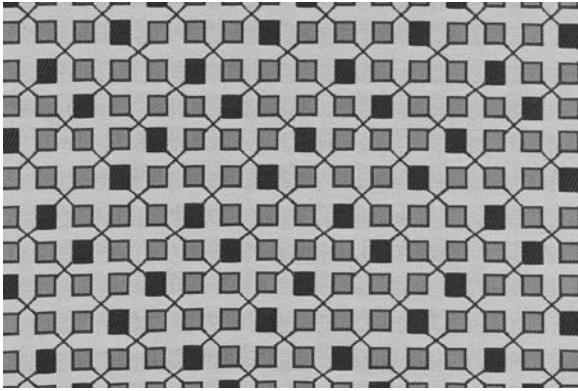
**LOTUS**  
442-006 Metal



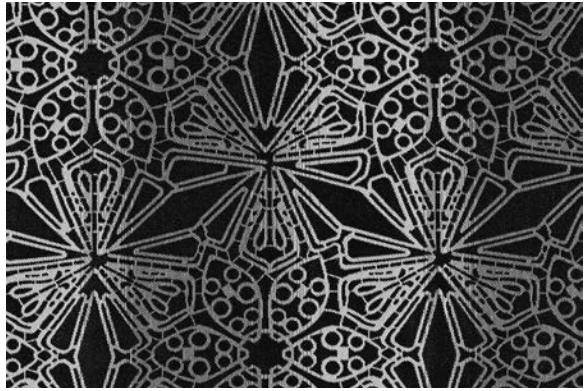
EPHESUS – Approx. Repeat: 14.17" H, 11.81" V Random Match



LOTUS – Approx. Repeat: 13.87" H, 14.5" V

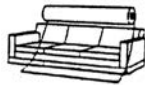


SUNA – Approx. Repeat: 3.688" H, 7" V

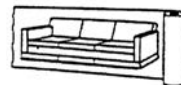


VIPASSANA – Approx. Repeat: 8.125" H, 14.625" V  
Shown Railroaded

Railroaded: This feature allows reduction of seams and enables smoother furniture tailoring.



Fabric "up the roll"  
or "regular" position



Fabric "railroaded" or  
"top selvage" position

We recommend all railroaded patterns should be upholstered as shown on card.

# TECHNICAL INFORMATION

## Renewal Seating Coordinates

Pattern 54"	Content and Backing	Certifications	Weight/ Linear Yd.	Pattern Repeat	Finish	Abrasion Wyzenbeek	Light-Fastness	Flammability	Cleaning Code	Grade
<b>ANKARA</b> <i>Directional</i>	55% Acrylic, 40% Polyester, 5% Viscose Backing: Acrylic	GREENGUARD Gold	23.25 oz.	14.17" H, 3.54" V Random Match	Stain Repellent-PFOA Free	50,000 Double Rubs	40 hours	Cal. 117-2013 NFPA 260/UFAC Class 1	WS	5
<b>EPHESUS</b> <i>Directional</i>	61% Polyester, 30% Acrylic, 9% Viscose Backing: Acrylic	GREENGUARD Gold	25.08 oz.	14.17" H, 11.81" V Random Match	Stain Repellent-PFOA Free	145,000 <sup>^</sup> Double Rubs	40 hours	Cal. 117-2013 NFPA 260/UFAC Class 1	WS	5
<b>ESSENCE</b> <i>Directional</i>	80% Vinyl Phthalate Free face, 20% Polyester backing	GREENGUARD	30 oz.	None	Soil & Stain Resistant Topcoat with Ink Resistant Technology	250,000 <sup>^</sup> Double Rubs	200 hours	Cal. 117-2013 NFPA 260/UFAC Class 1	WS, Bleach Cleanable	4
<b>LOTUS</b> <i>Directional</i>	100% Solution-Dyed Pre-Consumer Recycled Nylon Backing: Acrylic	GREENGUARD Gold, Facts Silver	15.28 oz.	13.87" H, 14.5" V	Stain Repellent-PFOA Free	100,000 Double Rubs	200 hours	Cal. 117-2013 NFPA 260/UFAC Class 1	WS, Bleach Cleanable	6
<b>MARMARA</b> <i>Directional</i>	59% Polyester, 35% Acrylic, 6% Viscose Backing: Acrylic	GREENGUARD Gold	20.11 oz.	14.2" H, 8.4" V Non-Matching	Stain Repellent-PFOA Free	150,000 <sup>^</sup> Double Rubs	40 hours	Cal. 117-2013 NFPA 260/UFAC Class 1	WS	4
<b>MINGLE</b> <i>Directional</i>	80% Vinyl Phthalate Free face, 20% Polyester backing	GREENGUARD	30 oz.	None	Soil & Stain Resistant Topcoat with Ink Resistant Technology	250,000 <sup>^</sup> Double Rubs	300 hours	Cal. 117-2013 NFPA 260/UFAC Class 1 FMVSS 302	WS, Bleach Cleanable	4
<b>ODESSA</b> <i>Directional</i>	64% Acrylic, 36% Polyester Backing: Acrylic	GREENGUARD Gold	25.40 oz.	13.8" H, 20.9" V Non-Matching	Stain Repellent-PFOA Free	50,000 Double Rubs	40 hours	Cal. 117-2013 NFPA 260/UFAC Class 1	WS	4
<b>SUNA</b> <i>Directional</i>	80% Solution-Dyed Pre-Consumer Recycled Nylon, 20% Solution-Dyed Nylon Backing: Acrylic	GREENGUARD Gold	17.14 oz.	3.688" H, 7" V	Stain Repellent-PFOA & PFOC Free	150,000 <sup>^</sup> Double Rubs	200 hours	Cal. 117-2013 NFPA 260/UFAC Class 1	WS, Bleach Cleanable	6
<b>VIPASSANA</b> <i>Directional Railroaded</i>	100% Solution-Dyed Pre-Consumer Recycled Nylon Backing: Acrylic	GREENGUARD Gold, Facts Gold	14.85 oz.	8.125" H, 14.625" V	Stain Repellent-PFOA & PFOC Free	156,000 <sup>^</sup> Double Rubs	200 hours	Cal. 117-2013 NFPA 260/UFAC Class 1	WS, Bleach Cleanable	6

### REDUCED ENVIRONMENTAL IMPACT

These products are GREENGUARD Certified or GREENGUARD Gold Certified for low chemical and particle emissions to UL standard UL 2818 and may contribute to LEED certification. For complete information visit [mayerfabrics.com](http://mayerfabrics.com) and [UL.com/gg](http://UL.com/gg).

#### Lotus, Vipassana



The Eco-System icon indicates 100% recycled content.



The Facts icon indicates that a textile has been evaluated based on the requirements of the multi-attribute sustainability standard NSF/ANSI 336 through an independent third-party certification body authorized by the Association for Contract Textiles.

### CARE AND CLEANING INFORMATION

WS: Water/Solvent Cleaner

#### Essence, Lotus, Mingle, Suna, Vipassana

Bleach Cleanable – 1 part bleach, 9 parts water = 10% bleach, 90% water solution. Do not clean/disinfect fabric for longer than 10 minutes using the 10% bleach solution. Always rinse promptly with clean water after applying the bleach solution. Failure to do so will void any and all warranties.

For additional care and cleaning information by pattern, please refer to the Mayer Fabrics website.

### ADDITIONAL INFORMATION

**CAL TB 133:** All patterns may comply with California Technical Bulletin 133 when combined with appropriate components.

**^Abrasion:** Multiple factors affect fabric durability and appearance retention, including end-user application and proper maintenance. Wyzenbeek results above 100,000 double rubs have not been shown to be a reliable indicator of increased fabric lifespan.

**Custom Capabilities:** All patterns can be custom colored. Minimum yardage applies.

**Digital Swatch Card Color Matching:** Due to color variations on different monitors and color printers, actual swatch colors may vary slightly. Please request a memo sample from Mayer Fabrics to ensure proper color representation.

**Specifications:** Specifications are correct at the time of printing. Additional specifications are available on our website.



These fabrics meet or exceed these ACT performance guidelines. \*Certification Marks owned by ACT\*

#### Ankara, Ephesus, Lotus, Marmara, Odessa, Suna, Vipassana



Water and Stain Repellent Finish