

# Indiana FURNITURE

## Specifications

Grade 3

Uf <sub>2</sub> ™   Primera®	Uf <sub>2</sub> ™   Toscana	Uf <sub>2</sub> ™   Strada	Uf <sub>2</sub> ™   Pompeii	Uf <sub>2</sub> ™   Brillante
<b>Composition:</b> 100% Polyurethane Surface 55% Viscose Rayon, 45% Polyester	<b>Composition:</b> 100% Polyurethane Surface 55% Viscose Rayon, 45% Polyester	<b>Composition:</b> 100% Polyurethane Surface 55% Viscose Rayon, 45% Polyester	<b>Composition:</b> 100% Polyurethane Surface 55% Viscose Rayon, 45% Polyester	<b>Composition:</b> 100% Polyurethane Surface 55% Viscose Rayon, 45% Polyester
<b>Weight:</b> Approx. 12.5 oz. Per Square Yard Approx. 424 Grams Per Square Metre	<b>Weight:</b> Approx. 12.6 oz. Per Square Yard Approx. 426 Grams Per Square Metre	<b>Weight:</b> Approx. 13 oz. Per Square Yard Approx. 440.8 Grams Per Square Metre	<b>Weight:</b> Approx. 12 oz. Per Square Yard Approx. 426 Grams Per Square Metre	<b>Weight:</b> Approx. 14.5 oz. Per Square Yard Approx. 491.7 Grams Per Square Metre
<b>Abrasion:</b> ASTM D4157 / 400,000 Double Rubs (Wyzenbeek)* ASTM D3884 / 2,000 Cycles (Taber)* BS 2543 / 200,000 Rubs (Martindale)* *meets or exceeds	<b>Abrasion:</b> ASTM D4157 / 200,000 Double Rubs (Wyzenbeek)* ASTM D3884 / 2,000 Cycles (Taber)* BS 2543 / 150,000 Rubs (Martindale)* *meets or exceeds	<b>Abrasion:</b> ASTM D4157 / 200,000 Double Rubs (Wyzenbeek)* ASTM D3884 / 2,000 Cycles (Taber)* BS 2543 / 150,000 Rubs (Martindale)* *meets or exceeds	<b>Abrasion:</b> ASTM D4157 / 200,000 Double Rubs (Wyzenbeek)* ASTM D3884 / 2,000 Cycles (Taber)* BS 2543 / 150,000 Rubs (Martindale)* *meets or exceeds	<b>Abrasion:</b> ASTM D4157 / 200,000 Double Rubs (Wyzenbeek)* ASTM D3884 / 2,000 Cycles (Taber)* BS 2543 / 150,000 Rubs (Martindale)* *meets or exceeds
<b>GENERAL:</b>		<b>F/R RATING:</b>		
<b>Thickness:</b>	Approx. 1.0 Millimetres	ASTM E84 (Adhered) - Class A		
<b>Width:</b>	54 Inches / 137 Centimetres	CA TB 117-2013 - Pass		
<b>PERFORMANCE:</b>		FMVSS 302 & 95/28 Annex IV - Pass		
<b>Hydrolysis:</b>	7 Weeks ISO 1419 Method C (Accelerated Ageing)	NFPA 260 - Class 1		
<b>Adhesion of Coating:</b>	ASTM D751	UFAC - Class 1		
<b>Tear Strength:</b>	ASTM D2261	<b>Please Note:</b> These fabrics, when treated and/or used with other compatible furniture components, have been shown to perform well under the fire test conditions of:		
<b>Breaking Strength:</b>	ASTM D5034	<ul style="list-style-type: none"> <li>• ASTM E84 (Unadhered)</li> <li>• California Technical Bulletin 133</li> <li>• NFPA 701</li> </ul>		
<b>COLORFASTNESS:</b>				
<b>Crocking:</b>	AATCC 8, Class 4-5 Wet & Dry			
<b>Light:</b>	AATCC 16.3, 200 Hours, Grade 4-5			

### Cleaning Instructions

- Only use:
- Mild soap and water to remove stains.
  - Alcohol-based cleaners like Fantastik® and Formula 409®.
  - 5:1 water/bleach solution to disinfect.
  - Water to rinse off cleaning solution.

### Environmental Information

- Compliant with Prop 65
- Low VOCs (Volatile Organic Compounds)
- No Conflict Minerals
- No Flame Retardants (ex. Halogenated, Brominated)
- No PBDEs (Polybrominated Diphenyl Ethers)
- No Plasticizers, Heavy Metals or Phthalates
- No POPs (Persistent Organic Pollutants)
- No PVC (Polyvinyl Chloride)



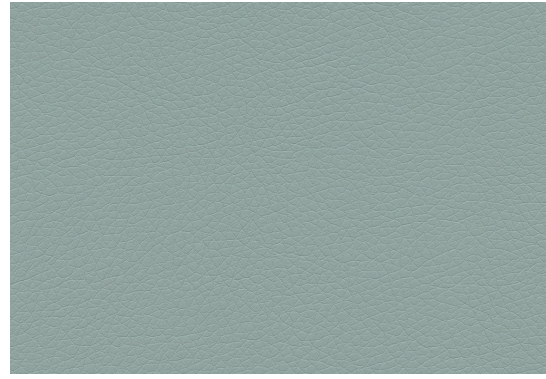
Please make an appointment to visit us at:  
3401 Madison Street  
Skokie, IL 60076  
www.appliedergonomics.com

Call us: (847) 679-5148  
Toll-free: (844) 859-9247  
Fax: (847) 933-0018

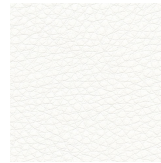
Email the President directly  
jmeltzer@appliedergonomics.com



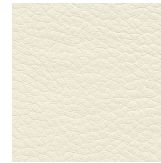
Uf2™ | Primera®



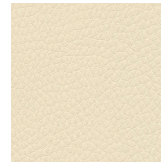
700-25362



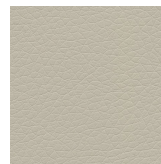
700-00042



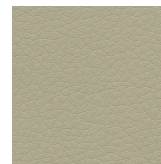
700-34882



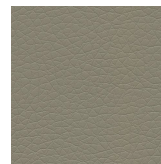
700-34202



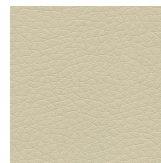
700-56842



700-39542



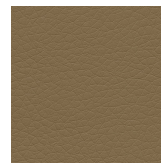
700-34332



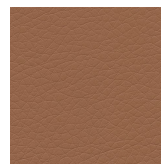
700-34312



700-34322



700-34382



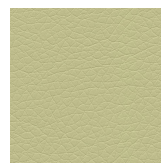
700-82172



700-13092



700-13372



700-44382



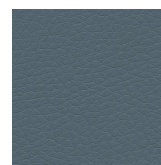
700-44392



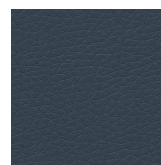
700-56282



700-25362



700-25372



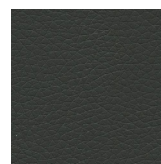
700-25382



700-34392



700-34402

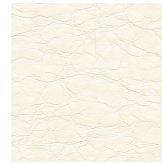


700-56392

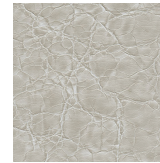
Uf2™ | Pompeii



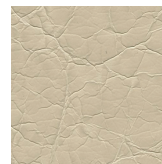
704-34302



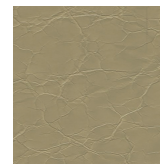
704-00092



704-34212



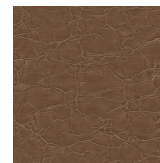
704-33632



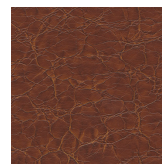
704-33442



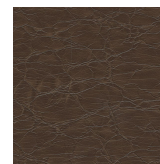
704-34302



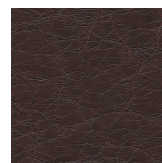
704-34272



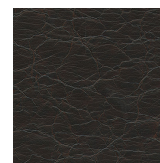
704-33812



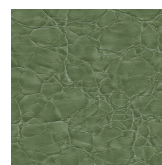
704-35882



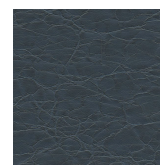
704-13682



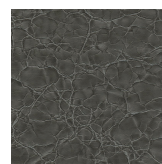
704-36292



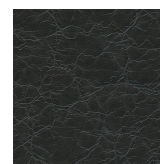
704-43602



704-26362

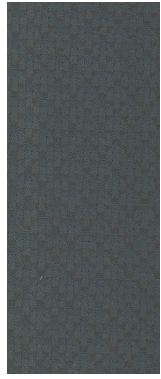


704-59122



704-59132

Uf2™ | Brillante



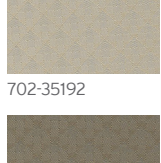
702-59072



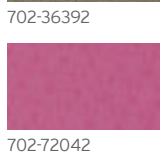
702-00072



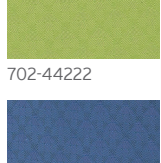
702-58822



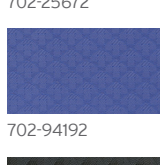
702-35192



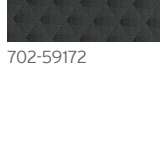
702-36392



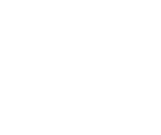
702-72042



702-44222



702-25672

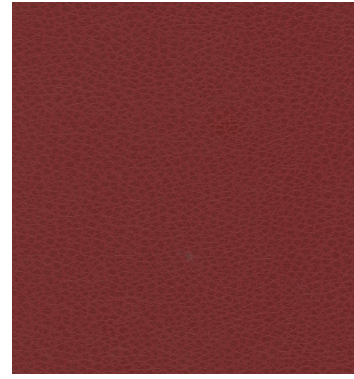


702-94192

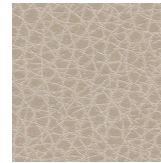


702-59172

Uf2™ | Strada



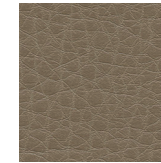
703-13332



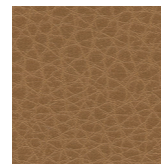
703-33662



703-37072



703-36322



703-33702



703-36502



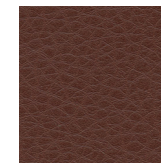
703-37522



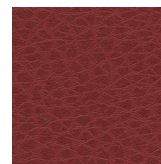
703-34252



703-38922



703-33832



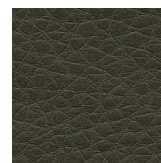
703-13332



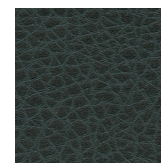
703-93732



703-93762



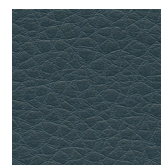
703-43442



703-43592



703-33872



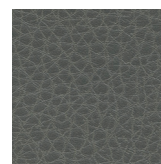
703-73082



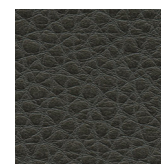
703-50212



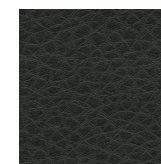
703-26532



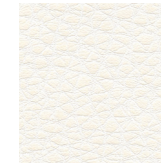
703-58842



703-38772



703-59152

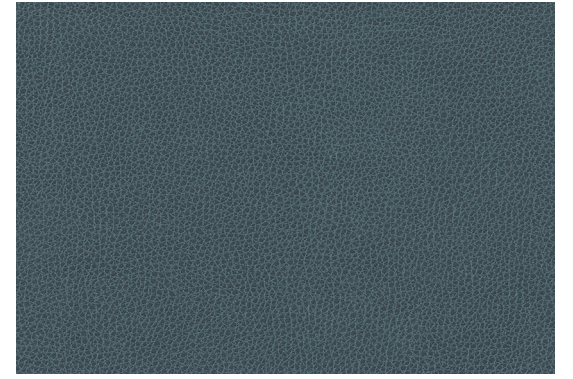


703-00032



703-34292

Uf2™ | Toscana



701-73052



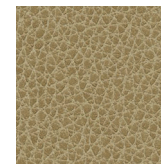
701-35132



701-33232



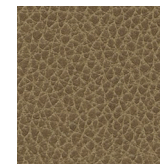
701-31172



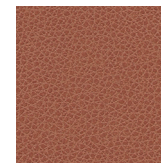
701-33392



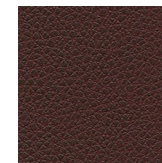
701-36402



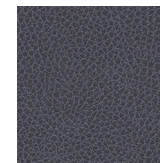
701-33272



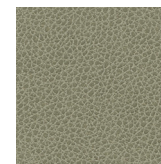
701-82002



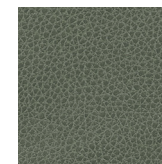
701-13582



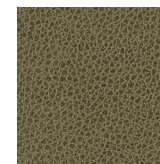
701-94242



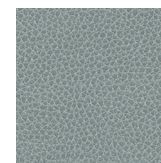
701-43102



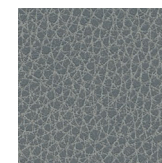
701-43342



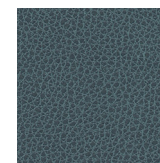
701-44212



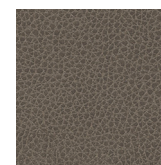
701-72892



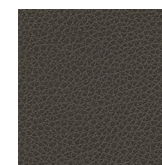
701-58782



701-73052



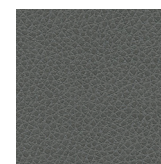
701-36592



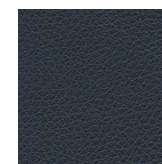
701-35342



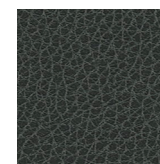
701-35272



701-37222



701-25692



701-59092