



krug





Plasma hutch with piers and pedestals



Media pier



Media pedestal



Media buffet

V2 media cabinets are designed to accommodate the latest in video conferencing and audio/visual technology. Flat screen TV monitors are accommodated in Media Hutches, Plasma Screen Lift Cabinets - or can be wall mounted. There are also Media Buffets, Media Piers, and Media Pedestals. All of the new components in the V2 offering are of the same design as the existing Virtu Conferencing components, so that Virtu Conferencing components can be used with V2 products and are completely compatible.



Die cast molding on top of leg



Cable management cavity



The V2 Leg (available with glides or casters) is a sophisticated cable management solution, with more than 2.5" sq of capacity inside the leg. The cable management cavity is easily accessible through a full length removable cover. The polished die-cast mounting plate at the top of the leg provides an exceptionally strong connection point between the table tops and the legs, making V2 a table system that is built to last.







Visual board closed

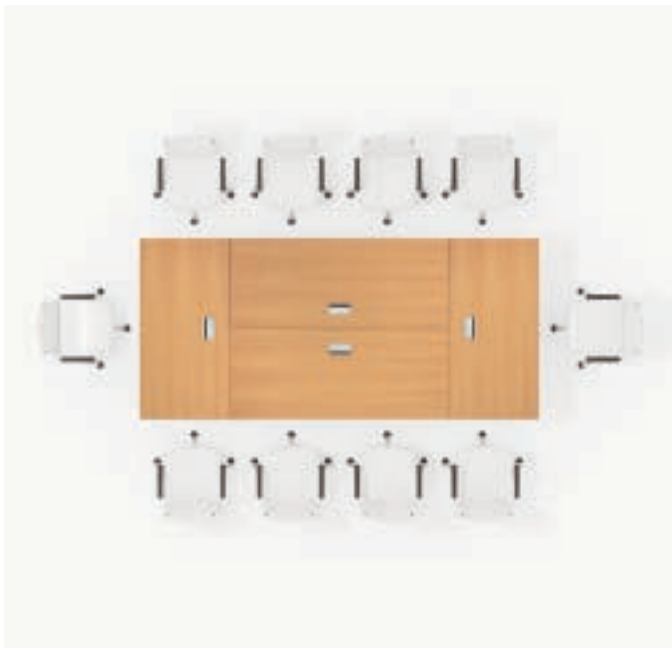


Visual board open

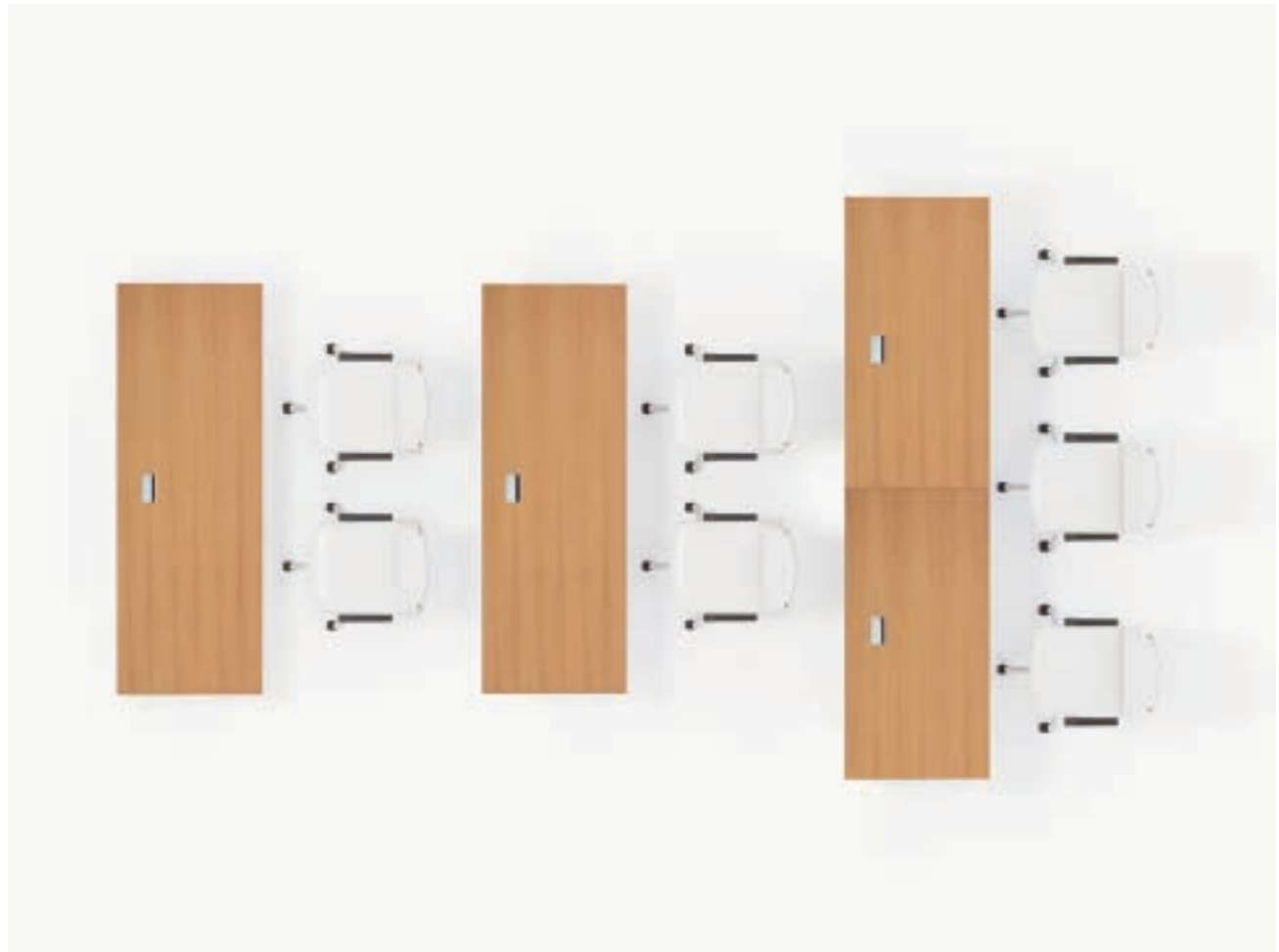
Krug's Palette painted finish offering is available on conferencing casegood and ancillary components, to provide a finish that matches or complements solid color laminates and PVC edges. The V2 Visual Board features sliding doors. Also offered is the V2 White Board, which is a wall-mountable white board that includes a roll-out presentation screen.



Conference configuration 1



Conference configuration 2



Training configuration

The V2 table configurations shown on this page are all made with the same four table modules, demonstrating the versatility of this product. The same space can be quickly reconfigured from a staff conference room, to a training room, to a space for board meetings or receiving outside visitors. V2 allows you to optimize the usage of meeting room space. The optional ganging module allows V2 tables to be hard-connected, and it is self-storing - neatly fastening underneath the table when not in use.







V2 is a conferencing solution that supports environmental sustainability objectives. Non-urea particleboard and glues, FSC®-certified woods, bamboo veneers, and the extensive utilization of recycled and recyclable materials in the product and the packaging - all of these are available on V2, and specifically contribute to LEED credits. V2 has a Greenguard™ certification that, along with the existing certification of all Krug's seating, provides assurance of healthier air quality when specifying Krug.



Plasma lift buffet open



Plasma lift buffet closed



Wood modesty panel



Frosted acrylic modesty panel



Perforated metal modesty panel



Wood table top with wood edge



Laminate table top with wood edge



Laminate table top with PVC edge



Ganging module



Byrne 8-Trac® 42" jumper



Byrne 4-Trac® 42" jumper



Byrne 8-Trac® system



Byrne 4-Trac® system



PowerPort



Surface Module



Grommet



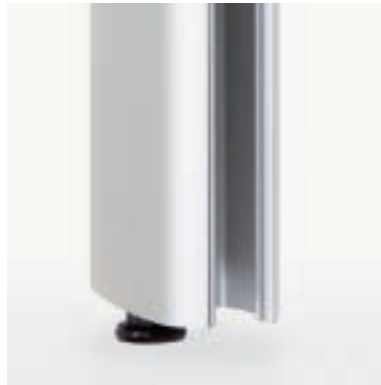
Underside of table with Byrne 8-Trac® system and optional cable management trough



Underside of table with Byrne 4-Trac® system and optional cable management trough



Cable management access cover closed



Cable management access cover open



Leg with optional caster

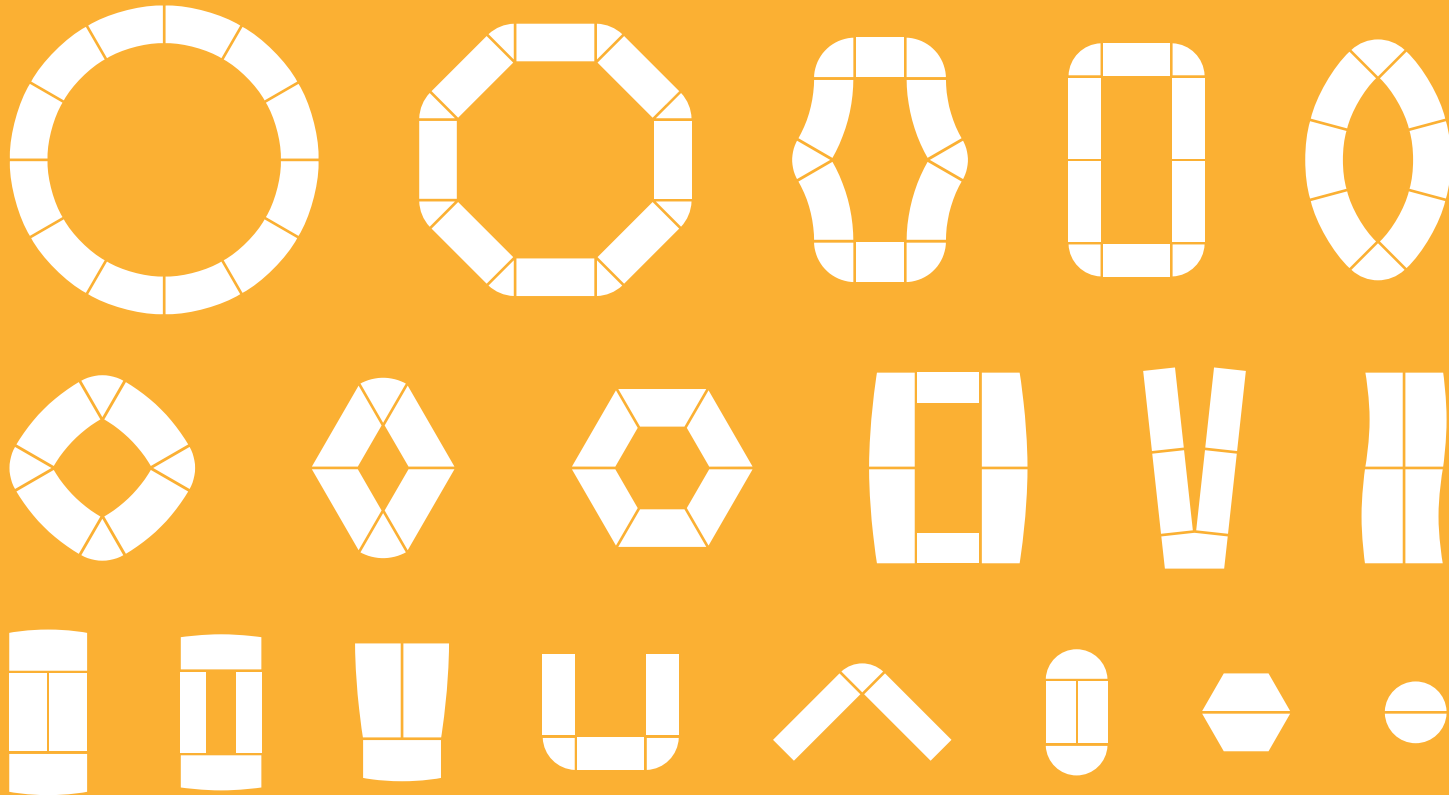


Convenient access to floor monuments



Edge profile

SAMPLE CONFIGURATIONS



Krug offers an extensive range of furnishings for private office and conferencing, and a comprehensive seating collection. A company-wide program is in place to reduce the impact of our products and processes on the environment. For a copy of this program, or more information about products, please contact your local Krug representative, or Krug Customer Service.



All products are FSC® certified



Please make an appointment to visit us at:
 3401 Madison Street
 Skokie, IL 60076
www.appliedergonomics.com

Call us
 Tel: (847) 679-5148
 (844) 859-9247
 Fax: (847) 933-0018

Email the President directly
jmeltzer@appliedergonomics.com