

Aura



Sea Salt / Sel de mer
SM



Galaxy / Galaxie
GX



Carbon / Carbone
CB



Ginger Root / Gingembre
GG



Twilight
TL

Aura



Dalia
DA



Sesame / Sésame
SE

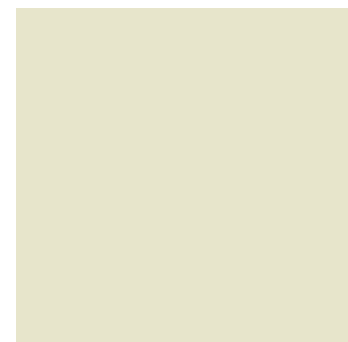
Dolomite



White / Blanc
BW



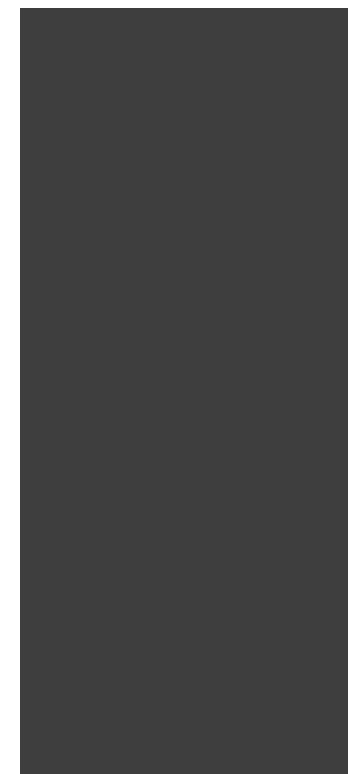
Frost / Grès
A



Antique White / Blanc antique
AW

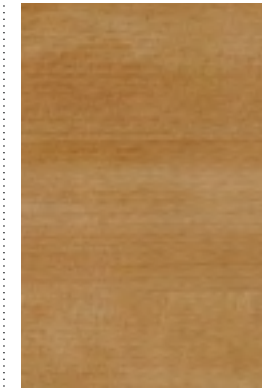


Black / Noir
N

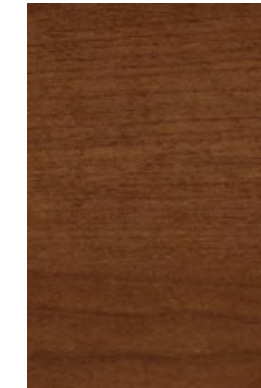


Charcoal / Fusain
F

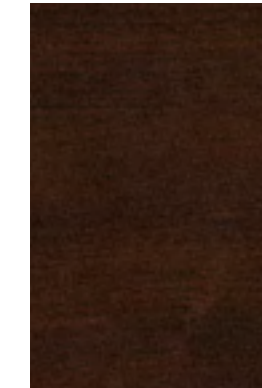
Suede



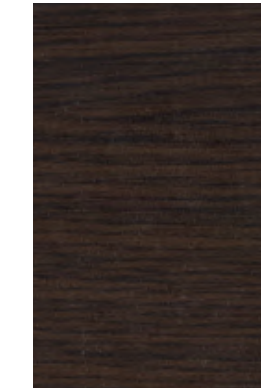
Honey / Miel
HO



Cherry / Cerisier
CH

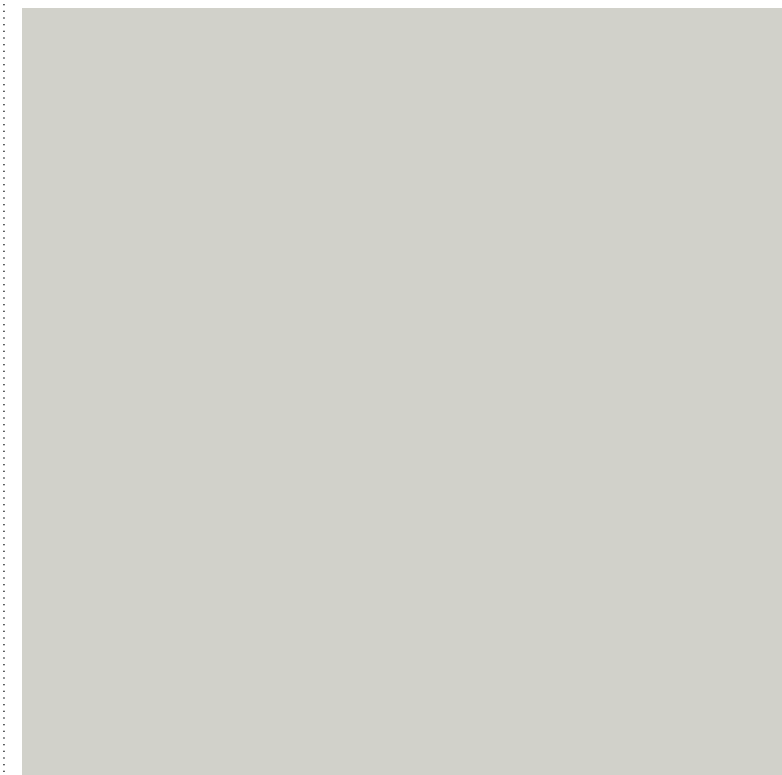


Cayenne Maple / Érable cayenne
CM



Dark Oak / Chêne sombre
DK

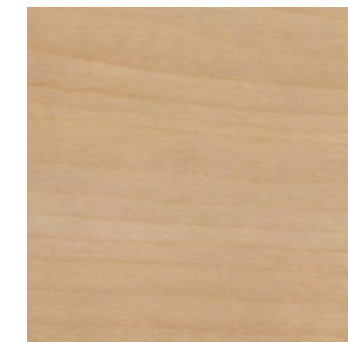
Supermat



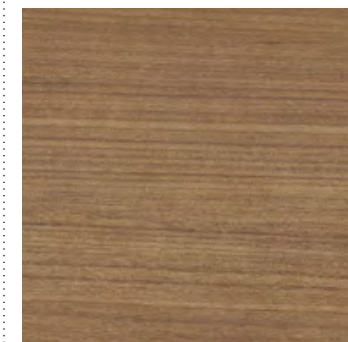
Willow Grey / Gris saule
WG



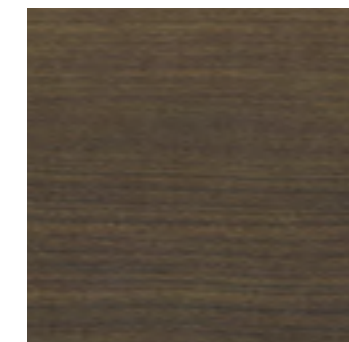
Douglas Pine / Pin douglas
DP



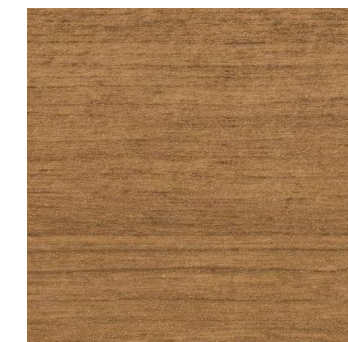
Maritime Maple / Érable maritime
EM



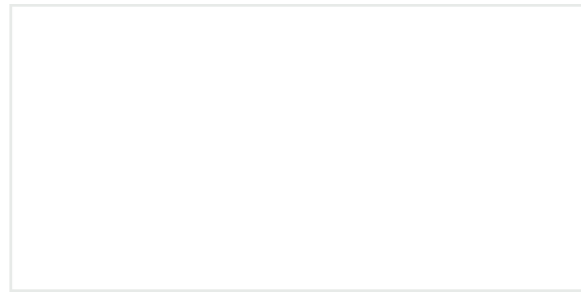
Moka
PM



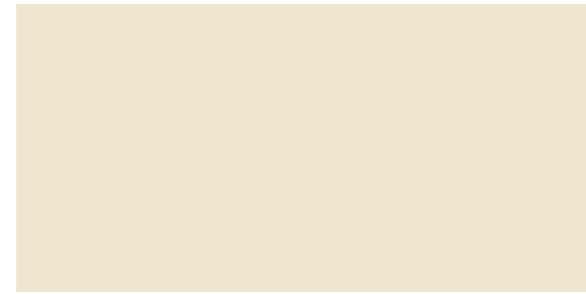
Chestnut / Châtaigne
CG



Tobacco Cherry / Cerisier tabac
TC



Polar White / Blanc polaire
ARTOPEX - 3002



Antique White / Blanc antique
ARTOPEX - 3004



Lemon / Citron
ARTOPEX - 3104



Cactus
ARTOPEX - 3105



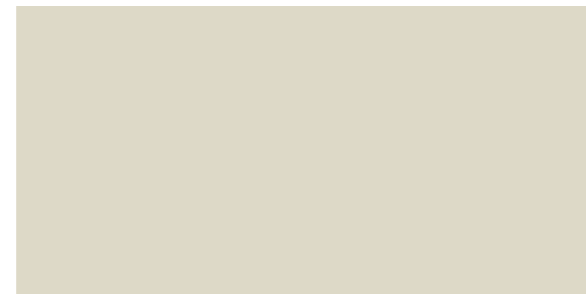
Suede / Suède
ARTOPEX - 3023



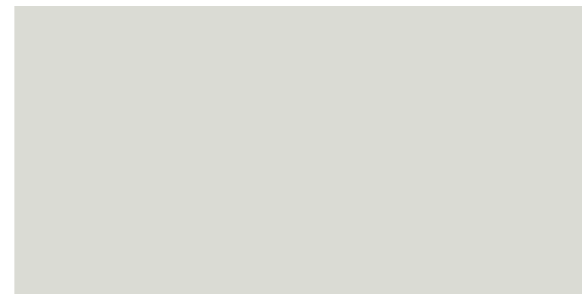
Espresso
ARTOPEX - 3076



Silver / Argent
ARTOPEX - 3090 * Standard prices / Prix standards



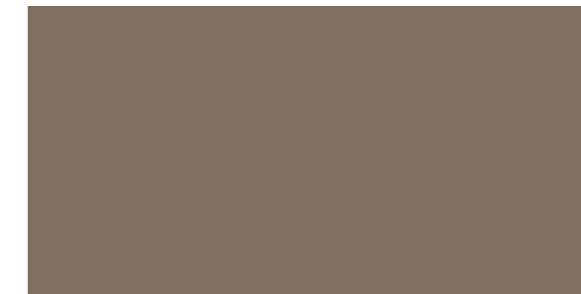
Eggshell / Coquille d'oeuf
ARTOPEX - 3005



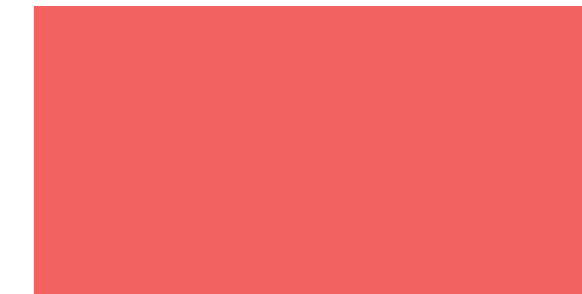
Fossil / Fossile
ARTOPEX - 3102



Abyss / Alysse
ARTOPEX - 3113



Mocha - Moka
ARTOPEX - 3075



Smoothie
ARTOPEX - 3109



Champagne
ARTOPEX - 3311 ** Metallic prices / Prix métalliques



Sand / Sable
ARTOPEX - 3009



Frost / Grès
ARTOPEX - 3065



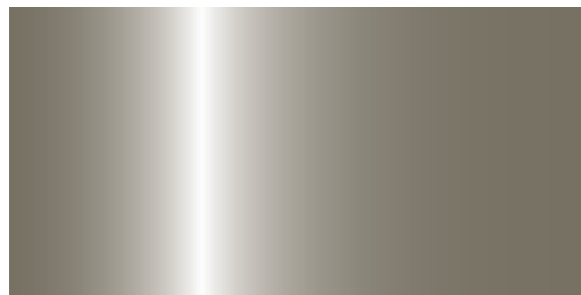
Source
ARTOPEX - 3106



Mimosa
ARTOPEX - 3114



Poppy / Coquelicot
ARTOPEX - 3110



Ashen / Cendré
ARTOPEX - 3370 ** Metallic prices / Prix métalliques



Warm Grey / Gris chaud
ARTOPEX - 3061



Grey / Gris
ARTOPEX - 3063



China Blue / Bleu Chine
ARTOPEX - 3048



Amber / Ambre
ARTOPEX - 3108



Cherry / Cerise
ARTOPEX - 3111



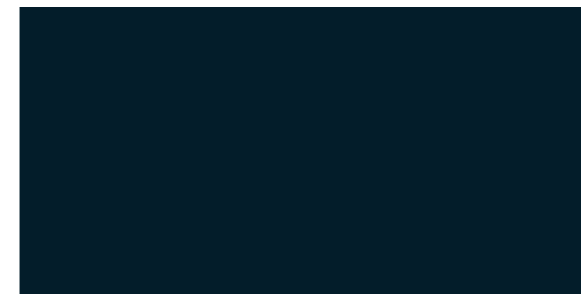
Black / Noir
ARTOPEX - 3067



Shadow / Ombre
ARTOPEX - 3101



Charcoal / Fusain
ARTOPEX - 3064



Navy / Marine
ARTOPEX - 3050



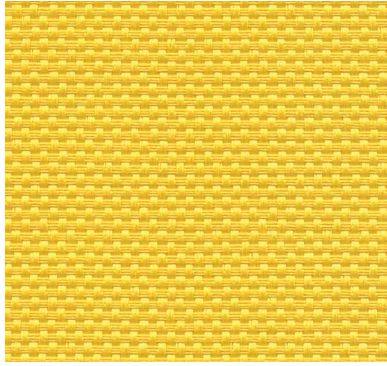
Tangerine
ARTOPEX - 3020



Grenadine
ARTOPEX - 3044

Grade 1

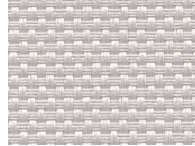
WHISPER II



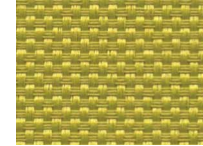
Peep WH91



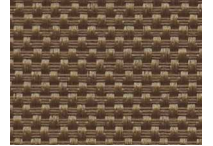
Dim WH76



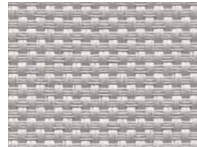
Tranquility WH80



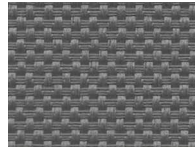
Reserve WH90



Muffle WH87



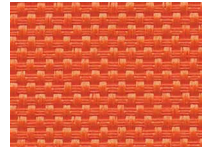
Stillness WH83



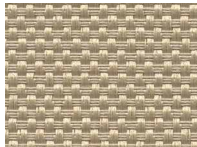
Lull WH89



Placid WH94



Mellow WH93



Hush WH81



Mute WH84



Serenity WH85



Mum WH97

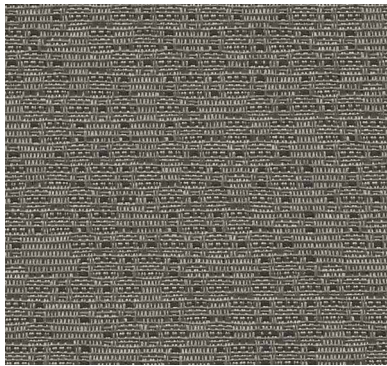


Secret WH96



Chant WH95

NETIQUETTE



Inkjet NT96



Bitmap NT91



Refresh NT99



Gamma NT98



Analog NT94

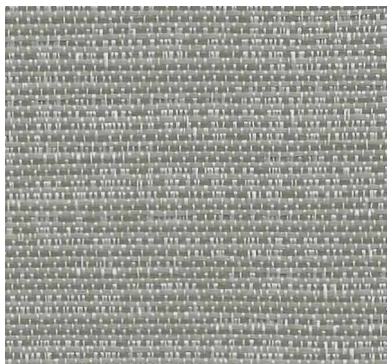


Pixel NT90



Vector NT97

STRATA



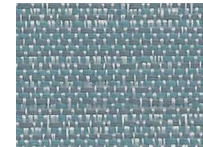
Glacial SR81



Crag SR13



Lichen SR57



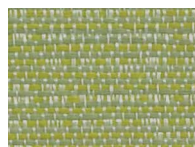
Seacliff SR45



Petra SR85



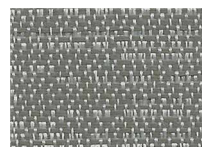
Tor SR11



Seneca SR58



Metamorphic SR52



Levee SR83



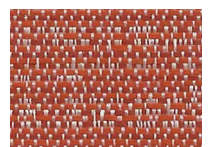
Druid SR12



Gully SR15

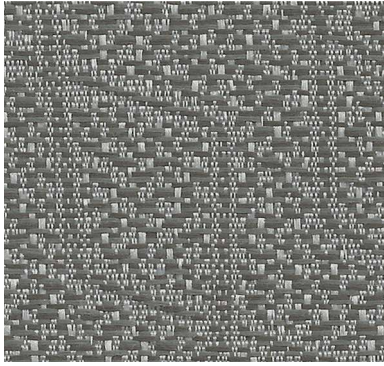


Sediment SR71



Meteora SR78

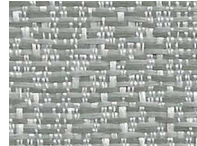
CRYSTALLINE



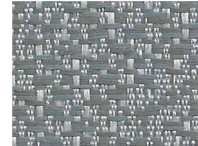
Carbonate YS82



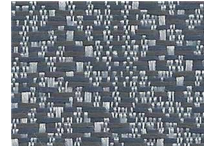
Travertine YS13



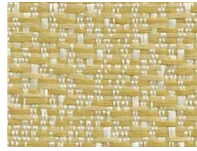
Stalagmite YS83



Pyroxene YS81



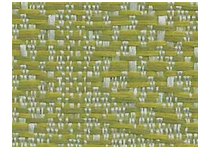
Mineral YS42



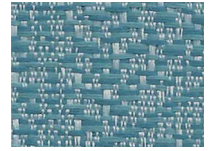
Tectonic YS21



Seismic YS52



Diorite YS51



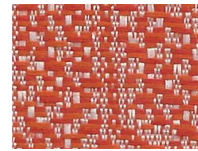
Concentric YS41



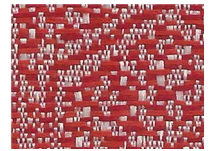
Stalagite YS12



Vesuvian YS72



Mantle YS71



Feldspar YS31

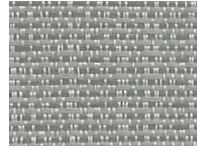
CASCADE



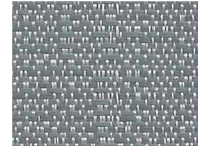
Calcium AS10



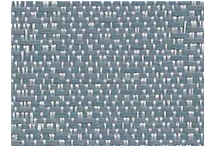
Aero AS19



Gorge AS86



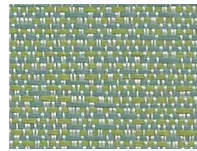
Promontory AS83



Stack AS45



Escarpment AS17



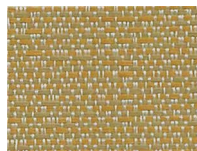
Geologic AS52



Peak AS51



Spur AS85



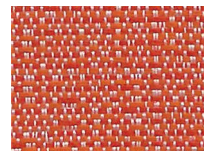
Kimberlite AS21



Granulite AS15



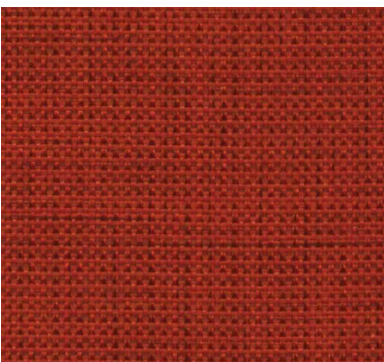
Igneous AS91



Plutonic AS73

Grade 2

OFF THE GRID



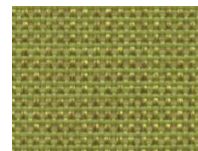
Flame OF10



Thermal OF06



Lava OF05



Flora OF12



Coal OF02



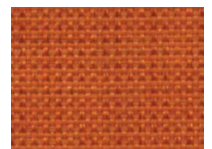
Fossil OF04



Hydro OF03



Tidal OF11



Earthglow OF09

DASHING



Bespoke Tan DH46



Polished Slate DH44



Genteel Beige DH43



Dapper Grey DH47

ESSENCE



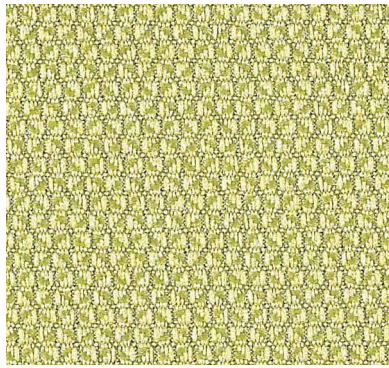
Mayflower ES35



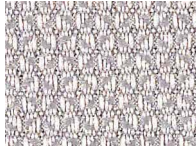
Queen Mary ES37

Grade 3

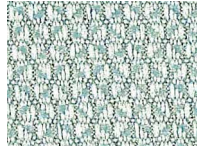
PACT



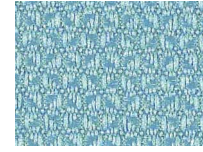
Fern PC88



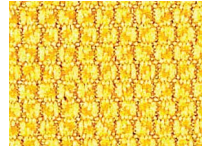
Dove PC55



Coastal PC33



Azure PC11



Eureka PC77



Taupe PC31



Roast PC76

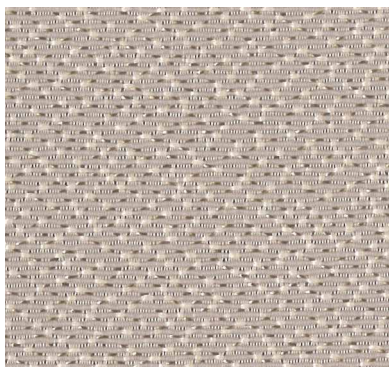


Nectar PC43



Roma PC87

UNIVERSE



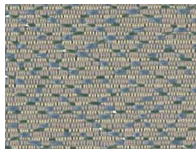
White Cap UN77



Mica UN33



Seneca UN55

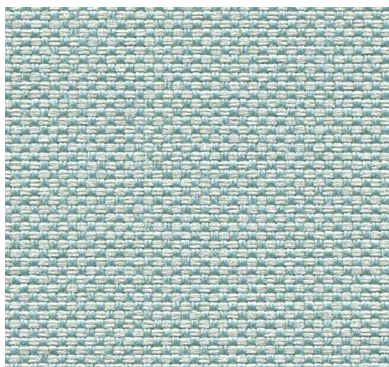


Cosmic UN26



Milkyway UN44

CAPE COD



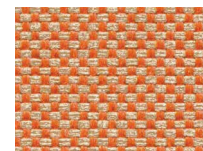
Cloud OD30



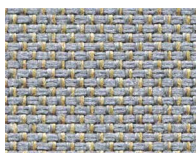
Linen OD31



Dune OD40



Apricot OD10



Surf OD62



Key lime OD50

Moodboard

PROPOSED COLOR SCHEMES / PROPOSITION D'AGENCEMENT DE COULEURS



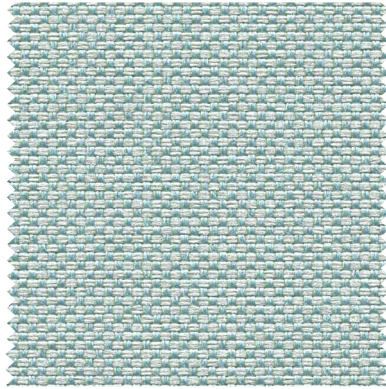
Sea Salt / Sel de mer SM



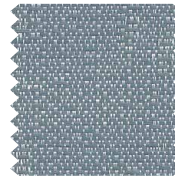
NT94



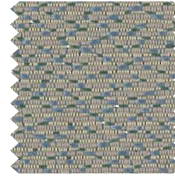
AS86



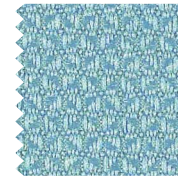
OD30



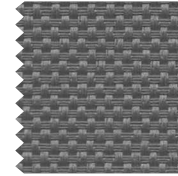
AS45



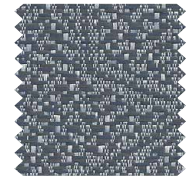
UN26



PC11



WH89



YS42



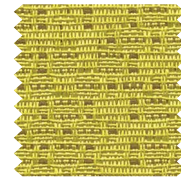
OF11



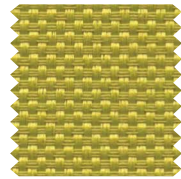
DH43



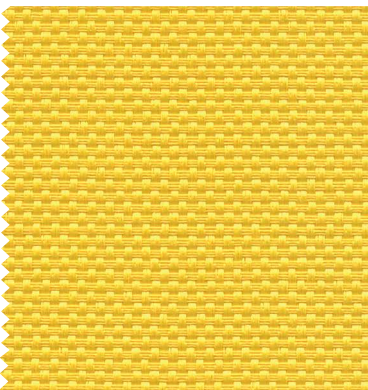
PC88



NT99



WH90



WH91



NT96

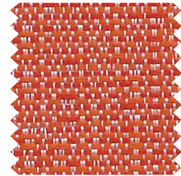


OD62



Galaxy / Galaxie

GX



AS73



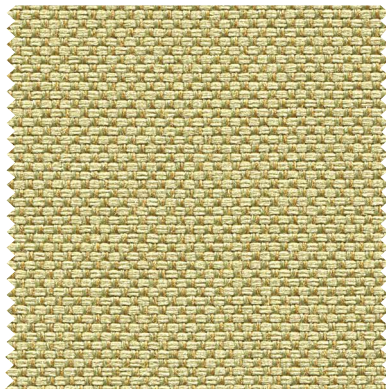
OF02



WH76



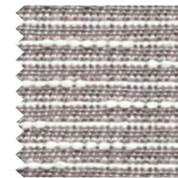
UN55



OD50



Carbon / Carbone CB



DH47



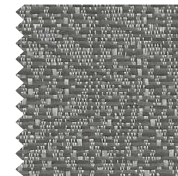
WH85



OD31



AS51



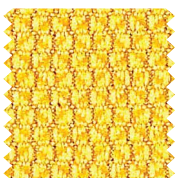
YS82



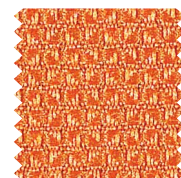
AS91



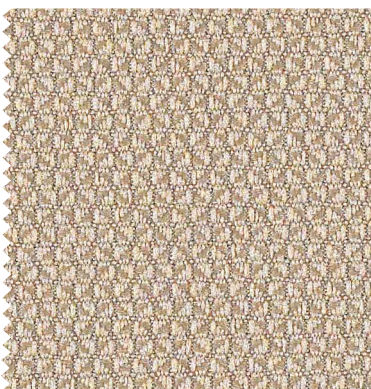
YS21



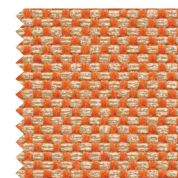
PC77



PC43



PC31



OD10



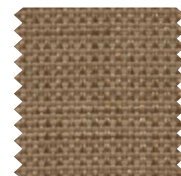
PC76



OD40



UN44



OF04



Twilight

TL

SPECIFICATION / SPÉCIFICATIONS	WHISPER II*	NETIQUETTE	STRATA	CRYSTALLINE	CASCADE
Composition	53% Recyc. - PC 100% Polyester	31% Recyc. - PC 100% Polyester	100% Recyc. - PC 100% Polyester	100% Recyc. - PC 100% Polyester	100% Recyc. - PC 100% Polyester
Weight-linear yard / Poids-verge linéaire	10.9 oz	9.6 oz	10 oz	11 oz	11 oz
Width / Largeur	68"	66"	67"	67"	67"
PERFORMANCE / PROPRIÉTÉS					
Tensile strength / Résistance à la rupture	Warp : 274 lbs Fill : 150 lbs	Warp : 259 lbs Fill : 132 lbs	Warp : 100 lbs Fill : 100 lbs	Warp : 100 lbs Fill : 100 lbs	Warp : 100 lbs Fill : 100 lbs
Color fastness to light / Résistance à la lumière	40hrs. Class/Classe 4.5	40hrs. Class/Classe 4	40hrs. L5	40hrs. L5	40hrs. L5
Color fastness to crocking AATCC 8 / Résistance au dégorgeage AATCC 8	Dry / Sec : Class 5 Wet / Humide : Class 5	Dry / Sec : Class 5 Wet / Humide : Class 5	Dry / Sec : Class 5 Wet / Humide : Class 5	Dry / Sec : Class 5 Wet / Humide : Class 5	Dry / Sec : Class 5 Wet / Humide : Class 5
Abrasion resistance / Résistance à l'abrasion	ASTM D-4157 100 000 D.R. / D.F.	ASTM D-4157 50 000 D.R. / D.F.			
Cleaning code / Nettoyage	WS	WS	WS	WS	WS
Acoustic textiles / Tissus acoustiques	Yes / Oui	Yes / Oui			
FLAMMABILITY / INFLAMMABILITÉ					
ASTM E-84	Class 1 or A	Class 1 or A	Class 1 or A	Class 1 or A	Class 1 or A
California - Tech. bulletin 117 Sec. E (CS-191-53) Californie - Bulletin tech. 117 Sec. E (CS-191-53)	Passes Passe	Passes Passe			
SAMPLING CONTACT / ÉCHANTILLON	victortextiles.com (418) 227-9897	victortextiles.com (418) 227-9897	artopex.com (800) 363-3040	artopex.com (800) 363-3040	artopex.com (800) 363-3040

SPECIFICATION / SPÉCIFICATIONS	OFF THE GRID*	DASHING	ESSENCE	PACT	UNIVERSE	CAPE COD
Composition	87% Recyc. 49% PI, 38% PC 100% Polyester	100% Recyc. 100% Polyester	100% Polyester	100% Recyc. 65% PI, 35% PC 100% Polyester	50% Recyc. - PC 100% Polyester	100% Recyc. 76% PI, 24% PC 100% Polyester
Weight-linear yard / Poids-verge linéaire	10 oz	10.9 oz	11.8 oz	12.9 oz	11.7 oz	12.4 oz
Width / Largeur	67"	66"	66"	66"	66"	66"
PERFORMANCE / PROPRIÉTÉS						
Tensile strength / Résistance à la rupture	Warp : 188 lbs Fill : 169 lbs	Warp : 240 lbs Fill : 191 lbs	Warp : 140 lbs Fill : 105 lbs	Warp : 292 lbs Fill : 307 lbs	Warp : 137 lbs Fill : 190 lbs	Warp : 150 lbs Fill : 150 lbs
Color fastness to light / Résistance à la lumière	40hrs. Class/Classe 4	40hrs. Class/Classe 4	40hrs. L5	40hrs. Class / Classe 4	40hrs. Class / Classe 4	40hrs. Class / Classe 4
Color fastness to crocking AATCC 8 / Résistance au dégorgeage AATCC 8	Dry / Sec : Class 5 Wet / Humide : Class 5	Dry / Sec : Class 4 Wet / Humide : Class 4	Class/Classe 4	Dry / Sec : Class 4.5 Wet / Humide : Class 4.5	Dry / Sec : Class 5 Wet / Humide : Class 5	Dry / Sec : Class 4 Wet / Humide : Class 3
Abrasion resistance / Résistance à l'abrasion	ASTM D-4157 100 000 D.R. / D.F.	ACTM D-4157 Mod. 60 000 D.R. / D.F.	ASTM D-4157 Mod.	50 000 D.R. / D.F.		
Cleaning code / Nettoyage	WS	WS	WS	WS	WS	WS
Acoustic textiles / Tissus acoustiques						Yes / Oui
FLAMMABILITY / INFLAMMABILITÉ						
ASTM E-84	Class 1 or A	Class 1 or A	Class 1 or A	Class 1	Class 1 or A	Class 1 or A
California - Tech. bulletin 117 Sec. E (CS-191-53) Californie - Bulletin tech. 117 Sec. E (CS-191-53)	Passes Passe	Passes Passe	Passes Passe	Passes Passe	Passes Passe	Passes Passe
SAMPLING CONTACT / ÉCHANTILLON	victortextiles.com (418) 227-9897	victortextiles.com (418) 227-9897	victortextiles.com (418) 227-9897	memosamples.com (800) 366-6839	memosamples.com (800) 366-6839	guilfordofmaine.com (800) 544-0200

* OFF THE GRID - lava OF05, thermal OF06 / WHISPER II- dim WH76, peep WH91.
These four colours are not recommended with the TakeOff System.
Ces quatre couleurs ne sont pas recommandées avec le SystèmeTakeOff.

Graded-in and pre-tested fabrics

In order to offer a wide selection of fabrics, a list of fabrics graded-in and pre-tested by Artopex (in various grades) is available at artopex.com. Please refer to the websites of the fabric manufacturers and distributors on this list to view the choices and/or to order samples of complementary fabrics.

Tissus pré-gradés et pré-testés

Dans le but d'offrir une grande variété de tissus, une liste de tissus pré-gradés et pré-testés par Artopex (incluant divers grades) est disponible sur le artopex.com. Veuillez vous référer au site internet des différents manufacturiers et distributeurs de tissus présentés sur cette liste afin de visualiser les choix offerts et/ou commander des échantillons pour ces tissus complémentaires.

Colours may vary from the actual colours due to the printing process used.
Please refer to samples for true colours.
Les couleurs sont aussi fidèles que les techniques d'impression le permettent.
Référez-vous aux échantillons pour les couleurs réelles.



Please make an appointment to visit us
3401 Madison Street Skokie, IL 60076
www.appliedergonomics.com

Call us
Tel: (847) 679-5148
Fax: (847) 933-0018

Email the President directly
jmeltzer@appliedergonomics.com