

Groupe Lacasse Paradigm Thermofused / High-Pressure Laminates



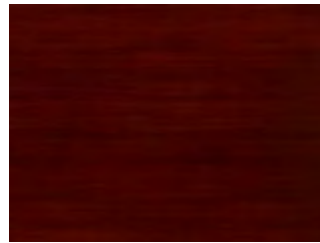
[BUC - Bourbon Cherry](#)



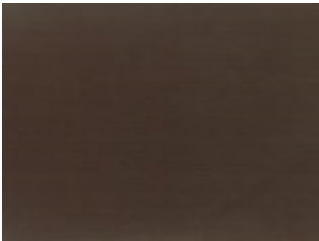
[CAR - Caramello](#)



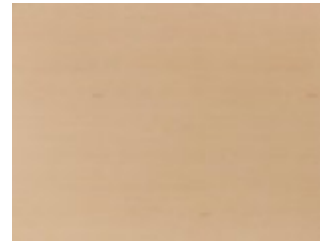
[CCL - Classic Chocolate](#)



[CER - Cherry](#)



[DCH - Dark Chocolate](#)



[ERH - Hard Rock Maple](#)



[FOS - Fossil](#)



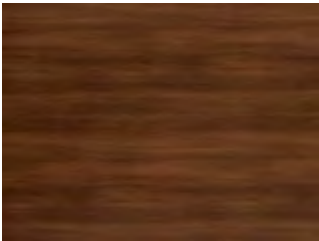
[GAN - Anthracite Grey](#)



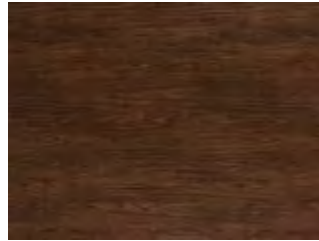
[GGI - Grigio](#)



[GVR - Frost](#)



[HZN - Hazelnut](#)



[KAR - Karoo](#)



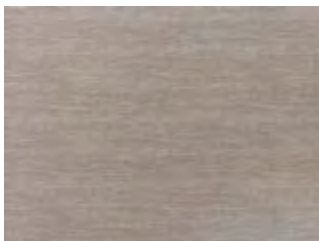
[MJV - Mojave](#)



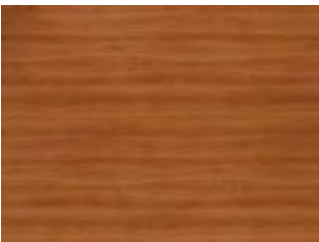
[MTA - Musta](#)



[NCN - Crystal Black](#)



[NGA - Niagara](#)



[NTL - Natural Cherry](#)



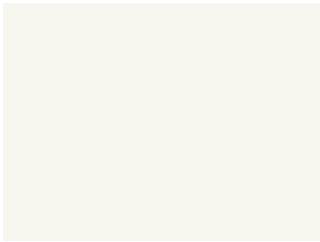
[RAS - Roots](#)



[SAH - Sahara](#)



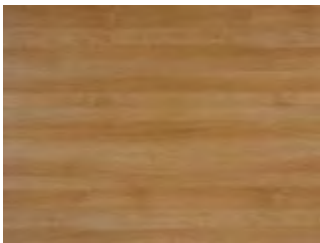
[SLT - Salta](#)



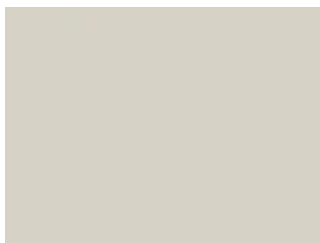
[SNO - Snow](#)



[TOM - Totem](#)



[TWT - Tuscany Walnut](#)



[WGR - Willow Grey](#)

## Groupe Lacasse Paradigm Metal Finishes



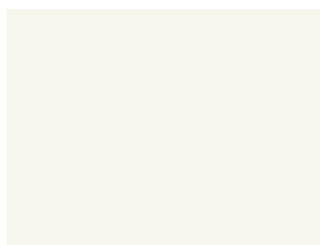
[P04 - Charcoal](#)



[P17 - Beige](#)



[P44 - Metallic Silver](#)



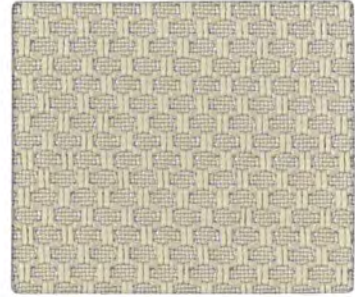
[P53 - Snow](#)

Finishes shown for the images on the website are for illustrative purposes and cannot be considered as a true representation. Please refer to actual samples before ordering.

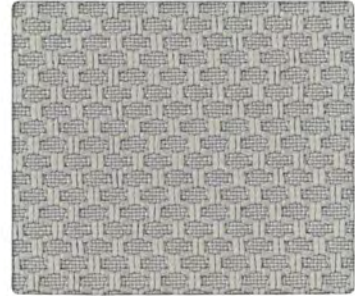
# Kinect



KN01 Veil



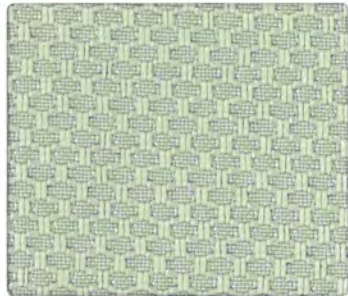
KN02 Dove



KN05 Nickel



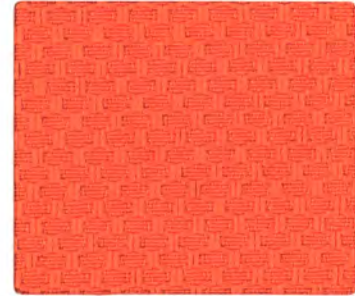
KN07 Ashen



KN06 Dew



KN09 Cove



KN08 Passion



KN10 Mercury



KN03 Mushroom



KN04 Chiffon

# TECHNICAL INFORMATION

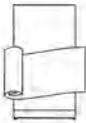
## INFORMATIONS TECHNIQUES

Width - Patron	Fiber Content	Lightfastness	Repeat	Cleaning Code	Grade
66" KINECT 	100% Post Consumer Recycled Polyester	40 Hours Class 4.5		WS	3
Largeur - Patron	Teneur en fibres	Résistance à la lumière	Répétition	Code de nettoyage	Grade
66" KINECT 	100 % Polyester recyclé post consommation	40 Heures Classe 4,5		WS	3

\*ACT® Registered Certification Marks

\*Marques de certification propriétés de l'ACT®

### Roll Application / Sens d'application



### Railroaded Upholstery

*Alignement horizontal du recouvrement*



For memo samples, please contact ...  
Pour des échantillons, s.v.p. contactez ...

**GROUPE  
LACASSE**

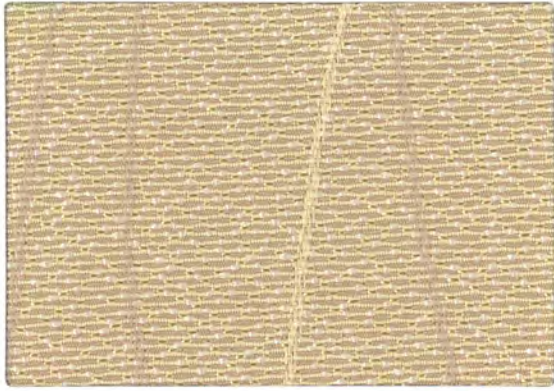
99 Saint-Pierre, Saint-Pie (Québec), Canada J0H 1W0  
888.522.2773 • www.grounelacasse.com  
Printed in the United States. Imprimée aux États-Unis.  
Information contained herein is subject to change without notice.  
Les informations figurant ici peuvent être modifiées sans préavis.

**MOMENTUM  
TEXTILES**  
800-366-6839  
memosamples.com

4257  
GL513-0  
6/19  
3M

# Meander & Universe

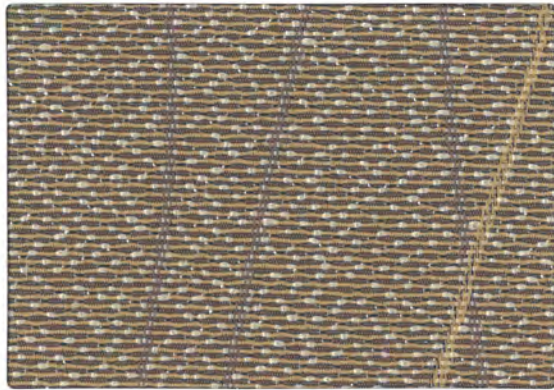
Grade 2



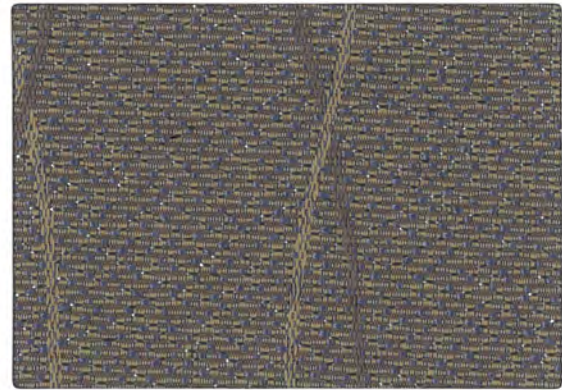
5L4 Meander Sandshell



5L3 Overcast



5L1 Agate Taupe



5L2 Nightshadow



5V2 Universe Crème Brûlée



5V8 Whitecap



5V4 Mica



5V5 Milkyway



5V7 Wheat



5V6 Seneca





5V1 Cosmic





5V3 Depth

# TECHNICAL INFORMATION

## INFORMATIONS TECHNIQUES

Width - Pattern	Fiber Content	Lightfastness	Repeat	Cleaning Code	Grade
66° MEANDER 	50% Post Consumer Recycled Polyester, 50% Polyester	40 Hours Class 4	16 7/8" W x 16 1/8" L	WS	2
66° UNIVERSE 	50% Post Consumer Recycled Polyester, 50% Polyester	40 Hours Class 4	3 1/2" W x 3 1/4" L	WS	2

Largeur - Patron	Teneur en fibres	Résistance à la lumière	Répétition	Code de nettoyage	Grade
66° MEANDER 	50 % Polyester recyclé post consommation, 50 % Polyester	40 Heures Classe 4	16 7/8" L x 16 1/8" H	WS	2
66° UNIVERSE 	50 % Polyester recyclé post consommation, 50 % Polyester	40 Heures Classe 4	3 1/2" L x 3 1/4" H	WS	2

\*ACT® Registered Certification Marks  
 \*Marques de certification propriétés de l'ACT®

### Roll Application / Sens d'application



### Up The Roll Upholstery

*Alignement vertical du recouvrement*



For memo samples, please contact ...  
 Pour des échantillons, s.v.p. contactez ...

**GROUPE**  
**LACASSE**

99 Saint-Pierre, Saint-Pie (Québec), Canada JOH 1W0  
 888.522.2773 • www.grounelacasse.com  
 Printed in the United States. Imprimée aux États-Unis.  
 Information contained herein is subject to change without notice.  
 Les informations figurant ici peuvent être modifiées sans préavis.

**MOMENTUM**  
 T E X T I L E S  
 800-366-6839  
 memosamples.com

4259  
 GL515-0  
 6/19  
 3M

# Proverb



PB01 Linen



PB04 Mist



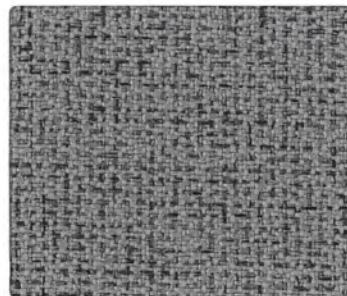
PB05 Armor



PB02 Crystal



PB08 Storm



PB09 Steel



PB07 Cinder



PB03 Rye



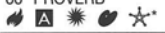

PB06 Oyster



PB10 Anchor

# TECHNICAL INFORMATION

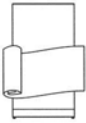
## INFORMATIONS TECHNIQUES

Width - Pattern	Fiber Content	Lightfastness	Repeat	Cleaning Code	Grade
66* PROVERB 	89% Post Consumer Recycled Polyester, 11% Polyester	40 Hours Class 4.5		WS	3
Largeur - Patron	Teneur en fibres	Résistance à la lumière	Répétition	Code de nettoyage	Grade
66* PROVERB 	89 % Polyester recyclé post consommation, 11 % Polyester	40 Heures Classe 4,5		WS	3

\*ACT® Registered Certification Marks

\*Marques de certification propriétés de l'ACT®

### Roll Application / Sens d'application



### Railroaded Upholstery

*Alignement horizontal du recouvrement*



For memo samples, please contact ...  
Pour des échantillons, s.v.p. contactez ...

**GROUPE**  
**LACASSE**

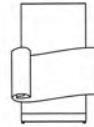
99 Saint-Pierre, Saint-Pie (Québec), Canada JOH 1W0  
888.522.2773 • www.grounelacasse.com  
Printed in the United States. Imprimée aux États-Unis.  
Information contained herein is subject to change without notice.  
Les informations figurant ici peuvent être modifiées sans préavis.

**MOMENTUM**  
T E X T I L E S  
800-366-6839  
memosamples.com

4258  
GL514-0  
6/19  
3M



PU3 Whisper



Railroaded Upholstery  
*Alignement horizontal du recouvrement*



/ Pursuit  
Grade 1

# 1

Panel Systems  
*Systèmes à panneaux*



PU6 Dove



PU7 Cement



PU8 Elephant



PU4 Mist Grey



PU5 Fern



PU2 Lemon Zest



PU1 White Linen

**Technical Information**  
*Renseignements techniques*

**/ Pursuit**  
**Grade 1**



**SPECIFICATIONS**

**Weight / Poids**  
**Width / Largeur**  
**Content / Composition**  
**Roll Application / Sens d'application**

**9.1 oz ± 0.5 oz per linear yard / par verge linéaire**  
**66"**  
**100% Pre-consumer recycled polyester / Polyester pré-consommation recyclé**  
**Railroaded upholstery / Alignement horizontal du recouvrement**

**PERFORMANCES**



**Flammability / Inflammabilité**  
**Cleaning / Nettoyage**

**This upholstery meets or exceeds the following ACT performance standards. / Ce recouvrement rencontre ou dépasse ces normes de performance ACT.**

**ASTM E-84 Class / Classe 1**

**Fabric may be cleaned with mild, water-free solvents or water-based cleaning agents or foam. Vacuuming or light brushing is recommended to prevent dust or soil build-up. / Nettoyer avec des agents dissolvants doux, à base d'eau, de mousse ou à sec. Utiliser un aspirateur ou brosser légèrement afin d'empêcher l'accumulation de poussière.**

**Dye lots may vary slightly from samples shown. / La teinte peut être différente des échantillons présentés.**

99 Saint-Pierre  
 Saint-Pie, Québec  
 Canada J0H 1W0

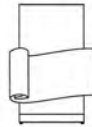
Tel. 450.772.2495 / 1.888.522.2773  
 Fax. 450.772.2632

[www.groupelacasse.com](http://www.groupelacasse.com)





HM2 Coffee



Railroaded Upholstery  
*Alignement horizontal du recouvrement*



/ Shimmer  
Grade 1

# 1

Panel Systems  
*Systèmes à panneaux*



HM1 Sand



HM3 Dust



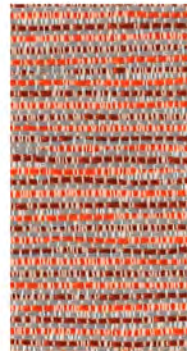
HM4 Charcoal



HM7 Grass



HM6 Sky



HM5 Sunset

**Technical Information**  
*Renseignements techniques*

**/ Shimmer**  
Grade 1



**SPECIFICATIONS**

**Weight / Poids**  
**Width / Largeur**  
**Content / Composition**  
  
**Repeat size / Répétition**  
**Roll Application / Sens d'application**

**10 oz ± 1 oz per linear yard / par verge linéaire**  
**66"**  
**100% Post-consumer recycled polyester / Polyester post-consummation recyclé**  
**7.125" Horizontal x 7.125" Vertical**  
**Railroaded upholstery / Alignement horizontal du recouvrement**

**PERFORMANCES**



**Flammability / Inflammabilité**  
  
**Cleaning / Nettoyage**

**This upholstery meets or exceeds the following ACT performance standards. / Ce recouvrement rencontre ou dépasse ces normes de performance ACT.**

**ASTM E-84 Class / Classe 1**

**Fabric may be cleaned with mild, water-free solvents or water-based cleaning agents or foam. Vacuuming or light brushing is recommended to prevent dust or soil build-up. / Nettoyer avec des agents dissolvants doux, à base d'eau, de mousse ou à sec. Utiliser un aspirateur ou brosser légèrement afin d'empêcher l'accumulation de poussière.**

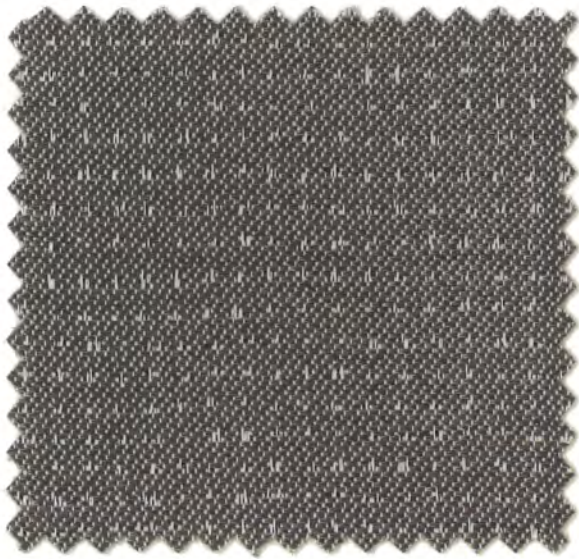
**Dye lots may vary slightly from samples shown. / La teinte peut être différente des échantillons présentés.**

99 Saint-Pierre  
Saint-Pie, Québec  
Canada J0H 1W0

Tel. 450.772.2495 / 1.888.522.2773  
Fax. 450.772.2632

[www.groupe-lacasse.com](http://www.groupe-lacasse.com)

**GROUPE**  
**LACASSE**

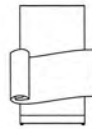


**SN3 Thunder**



**/ Starlight**  
Grade 1

**1**



**Railroaded Upholstery**  
*Alignement horizontal du recouvrement*

**Panel Systems**  
*Systèmes à panneaux*



**SN1 Tender**



**SN6 Putty**



**SN8 Mud**



**SN5 Grasshopper**



**SN2 Clay**



**SN4 Storm**



**SN7 Steel Blue**



**SN9 Fire**

**Technical Information**  
*Renseignements techniques*

**/ Starlight**  
**Grade 1**



**SPECIFICATIONS**

**Weight / Poids**  
**Width / Largeur**  
**Content / Composition**  
**Repeat size / Répétition**  
**Roll Application / Sens d'application**

**11 oz ± 1 oz per linear yard / par verge linéaire**  
**66"**  
**100% Post-consumer recycled polyester / Polyester post-consommation recyclé**  
**3.625" Horizontal x 5.875" Vertical**  
**Railroaded upholstery / Alignement horizontal du recouvrement**

**PERFORMANCES**



**Flammability / Inflammabilité**

**Cleaning / Nettoyage**

**This upholstery meets or exceeds the following ACT performance standards. / Ce recouvrement rencontre ou dépasse ces normes de performance ACT.**

**ASTM E-84 Class / Classe 1**

**Fabric may be cleaned with mild, water-free solvents or water-based cleaning agents or foam. Vacuuming or light brushing is recommended to prevent dust or soil build-up. / Nettoyer avec des agents dissolvants doux, à base d'eau, de mousse ou à sec. Utiliser un aspirateur ou brosser légèrement afin d'empêcher l'accumulation de poussière.**

**Dye lots may vary slightly from samples shown. / La teinte peut être différente des échantillons présentés.**

99 Saint-Pierre  
 Saint-Pie, Québec  
 Canada J0H 1W0

Tel. 450.772.2495 / 1.888.522.2773  
 Fax. 450.772.2632

[www.grounelacasse.com](http://www.grounelacasse.com)





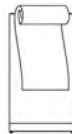
**E61 Tornado**



/ **Stratus**  
Grade 1

**1**

**Panel Systems**  
Systèmes à panneaux



**Up The Roll Upholstery**  
*Alignement vertical du recouvrement*



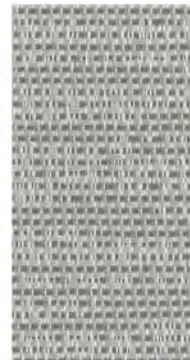
**E62 Daylight**



**E63 Diamond Dusk**



**E64 Fog**



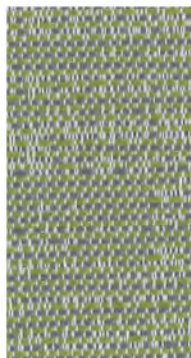
**E65 Mist**



**E66 Blue Halo**



**E67 Rain**



**E68 Hail**



**E69 Night Sky**

**Technical Information**  
*Renseignements techniques*

**/ Stratus**  
Grade 1



**SPECIFICATIONS**

**Weight / Poids**  
**Width / Largeur**  
**Content / Composition**

**Backing / Support**  
**Repeat size / Répétition**

**11 oz ± 1 per linear yard / par verge linéaire**  
**67"**

**100% Post consumer recycled polyester / Polyester post consommateur recyclé**

**Yes / Oui**

**7" Horizontal x 12" Vertical**

**PERFORMANCE**



**Flammability / Inflammabilité**

**Cleaning / Nettoyage**

**This upholstery meets or exceeds the following ACT performance standards.**  
*Ce recouvrement rencontre ou dépasse ces normes de performance ACT.*

**California #117 - Section E**  
**ASTM E-84 Class / Classe 1**

**Fabric may be cleaned with mild, water-free solvents or water-based cleaning agents or foam. Vacuuming or light brushing is recommended to prevent dust and soil build-up.**

*Nettoyer avec des agents dissolvants doux, à base d'eau, de mousse ou à sec. Utiliser un aspirateur ou brosser légèrement afin d'empêcher l'accumulation de poussière.*

**Dye lots may vary slightly from samples shown / La teinte peut être différente des échantillons présentés**

99 St-Pierre  
St-Pie, Québec  
Canada JOH 1W0

Tel. 450.772.2495 / 1.888.522.2773  
Fax. 450.772.2632

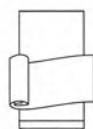
[www.groupelacasse.com](http://www.groupelacasse.com)

**GROUPE**  
**LACASSE**

/ Dune  
Grade 2



**MD1** Ambitious



**Railroaded Upholstery**  
*Alignement horizontal du recouvrement*

**2**

**Panel Systems**  
*Systèmes à panneaux*



**MD2** Zen



**MD3** Hearty



**MD4** Honest



**MD5** Forgiving



**MD6** Dreamer



**MD7** Peaceful



**MD8** Thoughtful



**MD9** Serene

**Technical Information**  
*Renseignements techniques*

**/ Dune**  
Grade 2

**SPECIFICATIONS**

**Weight / Poids**  
**Width / Largeur**  
**Content / Composition**  
**Repeat size / Répétition**  
**Roll Application / Sens d'application**

**11 oz ± 1 oz per linear yard / par verge linéaire**  
**66"**  
**100% Polyester**  
**13.94" Horizontal x 16.44" Vertical**  
**Railroaded upholstery / Alignement horizontal du recouvrement**

**PERFORMANCES**



**Flammability / Inflammabilité**

**Cleaning / Nettoyage**

**This upholstery meets or exceeds the following ACT performance standards. / Ce recouvrement rencontre ou dépasse ces normes de performance ACT.**

**ASTM E-84 Class / Classe 1**

**Fabric may be cleaned with mild, water-free solvents or water-based cleaning agents or foam. Vacuuming or light brushing is recommended to prevent dust or soil build-up. / Nettoyer avec des agents dissolvants doux, à base d'eau, de mousse ou à sec. Utiliser un aspirateur ou brosser légèrement afin d'empêcher l'accumulation de poussière.**

**Dye lots may vary slightly from samples shown. / La teinte peut être différente des échantillons présentés.**

99 Saint-Pierre  
Saint-Pie, Québec  
Canada J0H 1W0

Tel. 450.772.2495 / 1.888.522.2773  
Fax. 450.772.2632

[www.groupelacasse.com](http://www.groupelacasse.com)

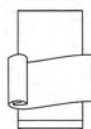
**GROUPE**  
**LACASSE**



FG09 Tidal



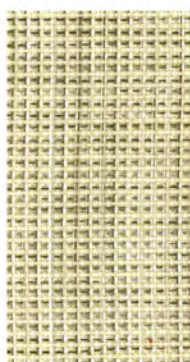
/ Off The Grid  
Grade 2



Railroaded Upholstery  
*Alignement horizontal du recouvrement*

2

Panel Systems  
*Systèmes à panneaux*



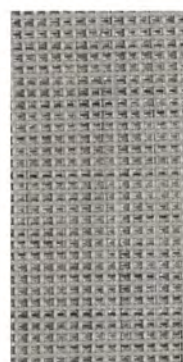
FG01 Steam



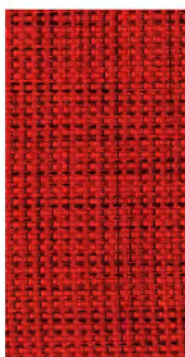
FG03 Fossil



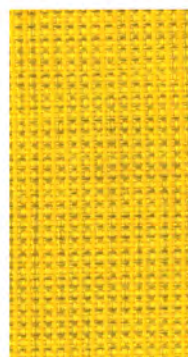
FG02 Thermal



FG04 Lava



FG08 Flame



FG05 Solar



FG06 Coal



FG07 Hydro

# Technical Information

Renseignements techniques

## / Off The Grid

Grade 2



### SPECIFICATIONS

Weight / Poids  
Width / Largeur  
Content / Composition  
Roll Application / Sens d'application

10 oz ± 1 oz per linear yard / par verge linéaire  
66"  
87% Pre-consumer recycled polyester / Polyester pré-conso-  
mmation recyclé, 13% Polyester  
Railroaded upholstery / Alignement horizontal du recouvrement

### PERFORMANCES



Flammability / Inflammabilité  
Cleaning / Nettoyage

This upholstery meets or exceeds the following ACT performance standards. / Ce recouvrement rencontre ou dépasse ces normes de performance ACT.

ASTM E-84 Class / Classe 1

Fabric may be cleaned with mild, water-free solvents or water-based cleaning agents or foam. Vacuuming or light brushing is recommended to prevent dust or soil build-up. / Nettoyer avec des agents dissolvants doux, à base d'eau, de mousse ou à sec. Utiliser un aspirateur ou brosser légèrement afin d'empêcher l'accumulation de poussière.

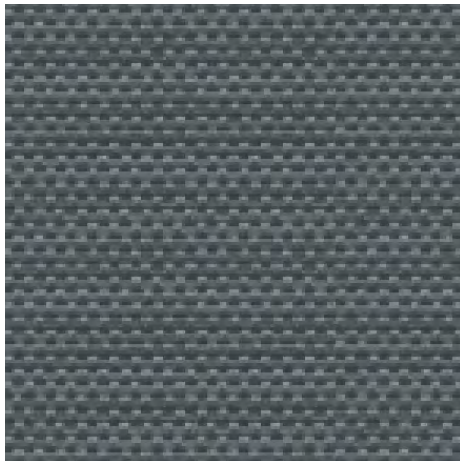
Dye lots may vary slightly from samples shown. / La teinte peut être différente des échantillons présentés.

99 Saint-Pierre  
Saint-Pie, Québec  
Canada J0H 1W0

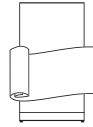
Tel. 450.772.2495 / 1.888.522.2773  
Fax. 450.772.2632

[www.groupelacasse.com](http://www.groupelacasse.com)

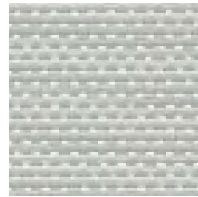
**GROUPE**  
**LACASSE**



**WP9**  
Lull



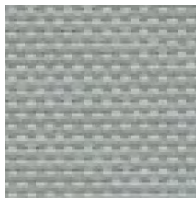
**Railroaded Upholstery**  
*Alignement horizontal du recouvrement*



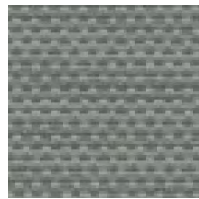
**WP1**  
Tranquility

2

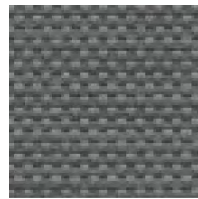
**Panel Systems**  
*Systèmes à panneaux*



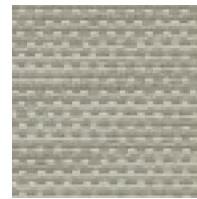
**WP4**  
Stillness



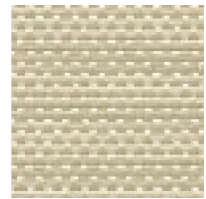
**WP7**  
Quiet



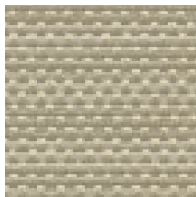
**WP6**  
Serenity



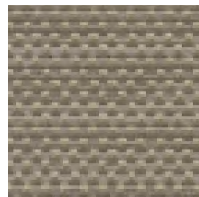
**WP3**  
Zen



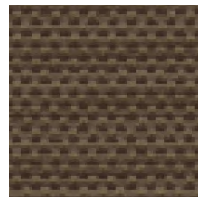
**WP2**  
Ambience



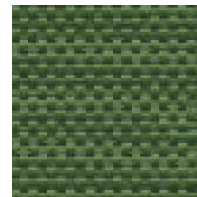
**WP5**  
Hush



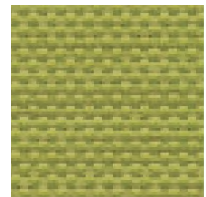
**WP8**  
Mute



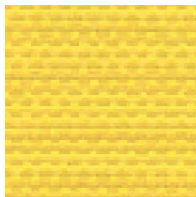
**WP13**  
Muffle



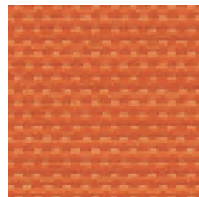
**WP14**  
Baffle



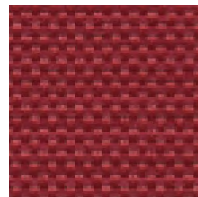
**WP11**  
Reserve



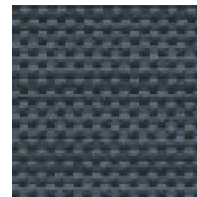
**WP10**  
Peep



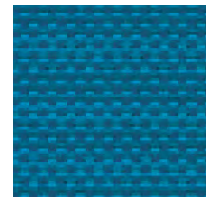
**WP12**  
Mellow



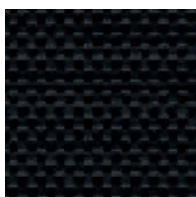
**WP15**  
Chant



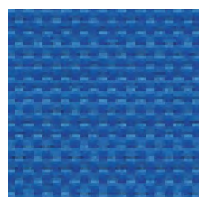
**WP16**  
Cloud



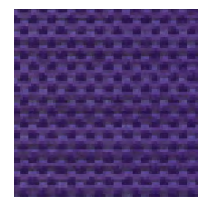
**WP18**  
Placid



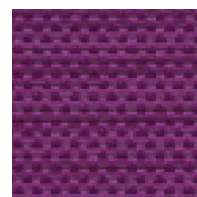
**WP21**  
Shadow



**WP20**  
Secret



**WP19**  
Mystery



**WP17**  
Mum

# Technical Information

Renseignements techniques

/ Wisdom  
Grade 2



## SPECIFICATIONS

Weight / Poids  
Width / Largeur  
Content / Composition  
Roll Application / Sens d'application

10.9 oz ± 1 oz per linear yard / par verge linéaire  
66"  
53% Post-consumer recycled polyester / Polyester post-consummation recyclé, 47% Polyester  
Railroaded upholstery / Alignement horizontal du recouvrement

## PERFORMANCES



Flammability / Inflammabilité  
Cleaning / Nettoyage

This upholstery meets or exceeds the following ACT performance standards. / Ce recouvrement rencontre ou dépasse ces normes de performance ACT.

ASTM E-84 Class / Classe 1

Fabric may be cleaned with mild, water-free solvents or water-based cleaning agents or foam. Vacuuming or light brushing is recommended to prevent dust or soil build-up. / Nettoyer avec des agents dissolvants doux, à base d'eau, de mousse ou à sec. Utiliser un aspirateur ou broser légèrement afin d'empêcher l'accumulation de poussière.

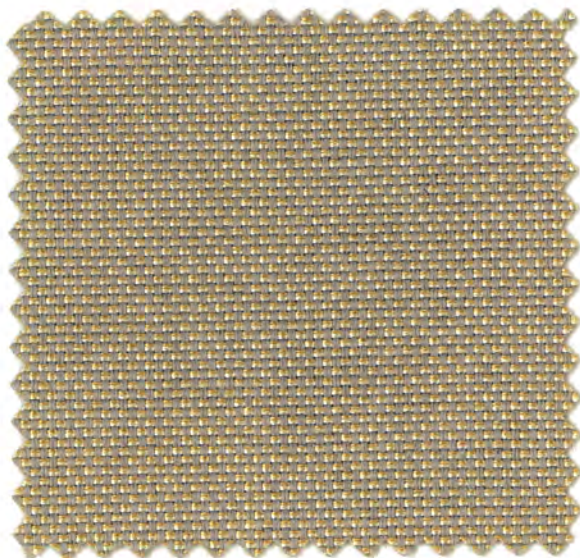
Dye lots may vary slightly from samples shown. / La teinte peut être différente des échantillons présentés.

99 Saint-Pierre  
Saint-Pie, Québec  
Canada J0H 1W0

Tel. 450.772.2495 / 1.888.522.2773  
Fax. 450.772.2632

[www.grounelacasse.com](http://www.grounelacasse.com)

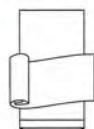
**GROUPE**  
**LACASSE**



CD5 Seagull



/ Cape Cod  
Grade 3



**Railroaded Upholstery**  
*Alignement horizontal du recouvrement*

# 3

**Panel Systems**  
*Systèmes à panneaux*



CD1 Linen



CD4 Shale



CD7 Buff



CD8 Dune



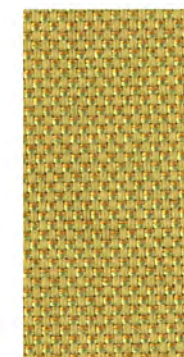
CD2 Cloud



CD9 Surf



CD6 Apricot



CD3 Key Lime

**Technical Information**  
*Renseignements techniques*

**/ Cape Cod**  
 Grade 3



**SPECIFICATIONS**

**Weight / Poids**  
**Width / Largeur**  
**Content / Composition**

**Roll Application / Sens d'application**

**12.4 oz ± 1 oz per linear yard / par verge linéaire**  
**66"**  
**76% Pre-consumer recycled polyester / Polyester pré-consommation recyclé, 24% Post-consumer recycled polyester / Polyester post-consommation recyclé**  
**Railroaded upholstery / Alignement horizontal du recouvrement**

**PERFORMANCES**



**Flammability / Inflammabilité**

**Cleaning / Nettoyage**

**This upholstery meets or exceeds the following ACT performance standards. / Ce recouvrement rencontre ou dépasse ces normes de performance ACT.**

**ASTM E-84 Class / Classe 1**

**Fabric may be cleaned with mild, water-free solvents or water-based cleaning agents or foam. Vacuuming or light brushing is recommended to prevent dust or soil build-up. / Nettoyer avec des agents dissolvants doux, à base d'eau, de mousse ou à sec. Utiliser un aspirateur ou brosser légèrement afin d'empêcher l'accumulation de poussière.**

**Dye lots may vary slightly from samples shown. / La teinte peut être différente des échantillons présentés.**

99 Saint-Pierre  
 Saint-Pie, Québec  
 Canada J0H 1W0

Tel. 450.772.2495 / 1.888.522.2773  
 Fax. 450.772.2632

[www.grounelacasse.com](http://www.grounelacasse.com)





Please make an appointment to visit us

3401 Madison Street  
Skokie, IL 60076  
[www.appliedergonomics.com](http://www.appliedergonomics.com)

Call us  
Tel: (847) 679-5148  
Fax: (847) 933-0018

Email the President directly  
[jmeltzer@appliedergonomics.com](mailto:jmeltzer@appliedergonomics.com)