

# Dynamic Solutions for the Open Workplace





## **Welcome to HAT Contract.**

We are committed to making the design and logistics of the open workplace efficient, affordable and supremely functional.

HAT Contract offers a wide product selection including electric height adjustable bases, HAT Power and Data Beams, HAT height adjustable benching, Mobile Pedestals, Monitor Arms, Privacy Dividers and more. HAT has all the elements that make an environment productive, comfortable and healthy. Our sales, management and support teams bring value and experience to each dealer. We know thoughtful and accurate quotations, competitive pricing, timely deliveries and dependable service come from proactive people who know the contract design industry.

Companies big and small have benefitted from adopting an open office plan. We proudly offer our clients solutions and tools for great spaces: products, coordination, education and consultation — they're all under one HAT.

**Alternating between sitting and standing positions, and maintaining moderate movement throughout the day contribute to good health for employees. HAT helps businesses of all sizes bring the positive investment of height adjustability into the open workplace environment. Meet our entire HAT team and learn more at [hatcontract.com](http://hatcontract.com).**



Shown with additional Dividers



Shown with additional Work Surfaces and Dividers



Mid HAT



Hi HAT



L Unit



Conference Table



Rectangle



120



Mobile Slim Pedestal



Mobile Pedestal



Surface mounted



Beam mounted



Bench mounted



Envoy



Evo®



Ella



7000



Staxx™

# Affordable solutions for the open office, all under one HAT

HAT Power and Data Beam: Easily brings power and data into open spaces. Available in four widths. Connector posts allow use as straight (L, T and X), or 120 degree (two and three way). Dividers available.

Stocked in:  
Silver  
Black  
White

## HAT Power and Data Beams

4

HAT Benching: Design incorporates a built-in power and data beam so power is carried into open areas. Height adjusts from 27.25" to 46.75". Available in three widths. Dividers available.

Stocked in:  
Silver  
White

## HAT Benching

6

HAT electric height adjustable bases: Stocked in three styles Mid HAT, Hi HAT and the three-legged L Unit. Reliably stocked in three colors. Three day lead time. Dividers available.

Stocked in:  
Silver  
Black  
White

## Height Adjustable Bases

8

HAT Work Surfaces for Bases and Benching: Available in four laminates. Standard Work Surface shapes for Bases and Benching available as rectangles and 120s.

Stocked in:  
Designer White

Made to order:  
Manitoba Maple  
Fawn Cypress  
Pinnacle Walnut

## Work Surfaces and Laminates

10

HAT Mobile Pedestals: Available in two widths. The slim version is designed to fit within the dead space between the legs of adjacent bases. Optional seat cushion available.

Stocked in:  
Silver  
Black  
White

## Mobile Pedestals

14

HAT Dividers and Accessories: Available as fabric fold. Or as acrylic, available in nine colors. Or as white board. Modesty Panels available. Dividers can be mounted to Work Surfaces, HAT Benching, and Power and Data Beams.

Made to order\*:  
Surface mounted  
Beam mounted  
Bench mounted  
Fabric  
Acrylic  
White board  
PET EchoScape

## Dividers and Accessories

16

HAT Monitor Arms: Monitor Arms available that can support one, two or three or more monitors.

Most arms available in:  
Silver  
Black  
White

## Monitor Arms

18

\* In stock divider options available, see page 17.



Shown with optional Cable Management Tray



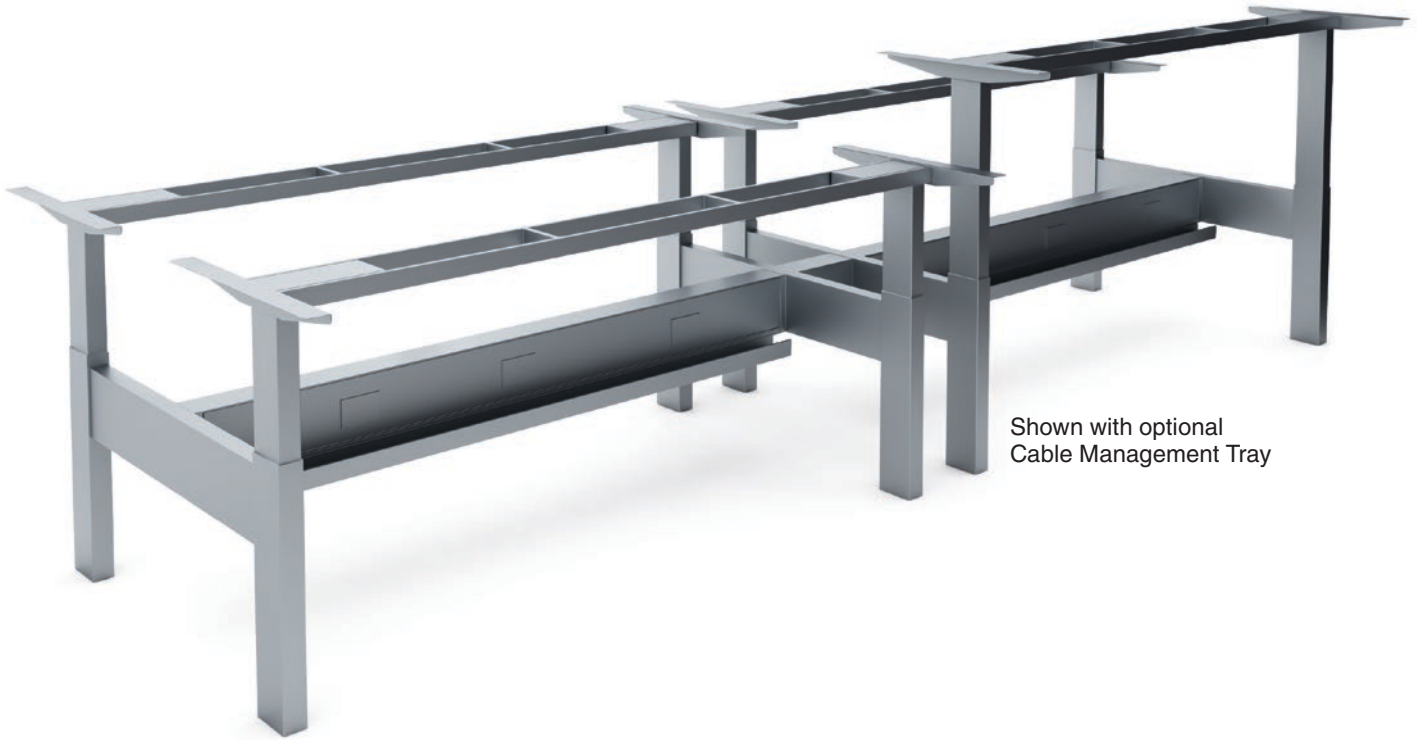
# HAT Power and Data Beams

HAT gets power and data distributed in a cost effective, simple, and clean way. The HAT Power and Data Beam offers the ultimate in design flexibility since it's not locked into a grid. Workstations can run perpendicular or parallel to the beam. Available in straight line (L, T and X), or 120 degree (two and three way). Also available: beam mounted Privacy Dividers in different dimensions.

## Power and Data Beam

- Frame height: 23"
- Available widths: 36", 48", 60" and 72"
- Optional Title 24 Compliant
- Stocked in silver, black and white
- Straight and 120 degree connector posts
- Each raceway cover includes: 2 receptacles and 1 voice data cutout
- Dividers available in PET, fabric, acrylic, and white board
- Electric system: 4-circuit, 8-wire Byrne™ 8 trac system
- Quick mounting clips for the PowerTrac come pre-installed
- 4 Duplex Receptacles per trac
- Voice and data cover plates provided





Shown with optional Cable Management Tray

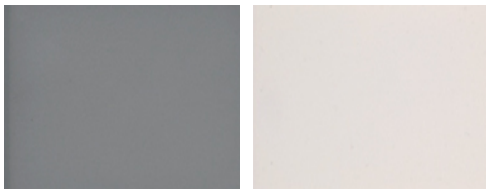




# HAT Benching

A new sleek height adjustable benching unit, at the same affordable HAT pricing and with our same quick shipping. A perfect solution for clients who want to maximize floor space but are weighing the cost of replacing their traditional office workstations.

## Benching Finishes



SI  
Silver

WH  
White

## Benching

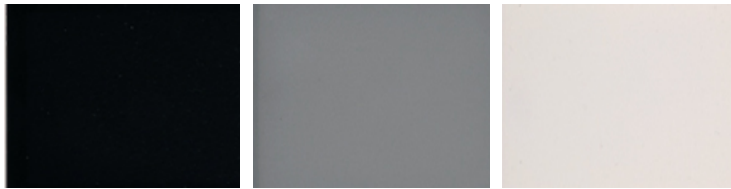
- Stocked in silver and white
- Width options are 48", 60" and 72"
- Includes 2 MID Bases with expandable frames (adjusts 27.25"–46.75" high)
- Includes 2 horizontal connector bars to connect base legs
- Includes Power Beam
- Includes Power Trac with jumper connector
- Additional elements are ordered separately: Duplex Receptacles, Base/Ceiling Power Feed, Work Surfaces, Dividers that are beam or surface-mounted, optional Cable Management Tray
- Dual sync motors/300 lb. lift capacity (including top)





# Height Adjustable Bases

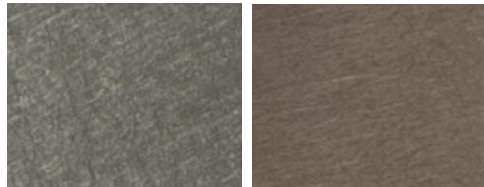
## Base Finishes



BK  
Black

SI  
Silver

WH  
White



HC  
Industrial Steel Matte  
*\*Special order only*

DM  
Industrial Steel Antique  
*\*Special order only*

Our bases are designed in 3 models and 5 versions. Bases are reliably stocked in 3 colors. HAT's two-legged bases feature the Folding HAT design, which minimizes assembly time. They're expandable with no fixed-width cross bar with which to contend. Featuring a synced and quiet motor system, and a 7-year warranty on electric and mechanical parts. Lifetime warranty on the frame.



### Mid HAT

2 stage leg unit

- Features the quick assembly "Folding HAT frame design." Easy and fast.
- Electric height adjustable table base (2 legs)
- Expandable width frame (S-24"-41", L-42"-74")
- 2 stage legs adjust from 27.25"-46.75" (frame height)
- Can accommodate work Surfaces from 26"-94" width
- LED 4 position programmable handset
- Dual sync motors/300 lb. lift capacity (including top)
- Cable manager included
- Anti-collision safety function
- Certified: UL 962, CE, GREENGUARD GOLD. Adds to LEED.
- Custom color match available – standard lead times apply
- Stocked in silver, black, and white finish (also available in industrial steel antique and industrial steel matte)



### Hi HAT

3 stage leg unit

- Features the quick assembly "Folding HAT frame design." Easy and fast
- Electric height adjustable table base (2 legs)
- Expandable width frame (S-24"-41", L-42"-74")
- 3 stage legs adjust from 23.75"-49" (frame height)
- Can accommodate work surfaces from 26"-94" width
- LED 4 position programmable handset
- Dual sync motors/300 lb. lift capacity (including top)
- Cable manager included
- Anti-collision safety function
- Certified: UL 962, CE, GREENGUARD Gold Adds to LEED.
- Custom color match available – standard lead times apply
- Stocked in silver, black and white finish (also available in industrial steel antique and industrial steel matte)



### L Unit

3 stage leg unit

- Electric height adjustable table base (3 legs)
- Expandable width frame (L-42"-74")
- "L" Unit can accommodate an "L" shaped work surface up to 84" x 84" width
- 3 stage legs adjust from 23.75"-49" (frame height)
- LED 4 position programmable handset
- Three synced motors/350 lb. lift capacity (including top)
- Cable manager included
- Anti-collision safety function
- Certified: UL 962, CE, GREENGUARD GOLD. Adds to LEED.
- Custom color match available – standard lead times apply
- Stocked in silver, black, and white finish



### Conference Table

2 stage leg unit

- Electric height adjustable table base (2 legs)
- Expandable width frame (72"-120")
- 2 stage legs adjust from 27.25"-46.75" (frame height)
- LED 4 position programmable handset
- Quad synced motors/350 lb. lift capacity (including top)
- Anti-collision safety function
- Certified: UL 962, CE, GREENGUARD GOLD. Adds to LEED.
- Stocked in black only



Designer White laminate shown with Hi Hat base in Industrial Steel Matte finish



# Work Surfaces and Laminates

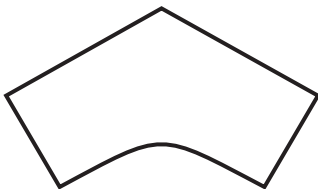
HAT Work Surfaces are available in four standard Laminates, two standard shapes, and in a variety of dimensions.

## Work Surfaces

Work Surfaces are available in two standard shapes.



Rectangular



120 Degree Corner

## Laminates

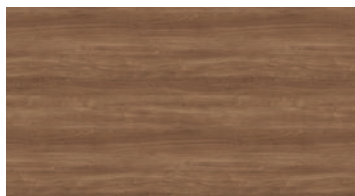
Our Work Surface laminates are available in four finish options.



Manitoba Maple



Fawn Cypress



Pinnacle Walnut



Designer White

## In Stock Program

Available in:

- 30" x 48" or 30" x 60"
- 1 laminate (Designer White)

## Standard Ship Program

Available in:

- 23 size options  
(see [hatcontract.com](http://hatcontract.com) for more information)
- 4 laminates (Manitoba Maple, Fawn Cypress, Pinnacle Walnut, Designer White)
- See Hat Pricer for more information





The HAT product line comes together to make beautiful and functional open office environments: height adjustable bases, HAT Benching, HAT Power and Data Beams, Dividers, Mobile Pedestals, Monitor Arms and more.

Mobile Pedestal

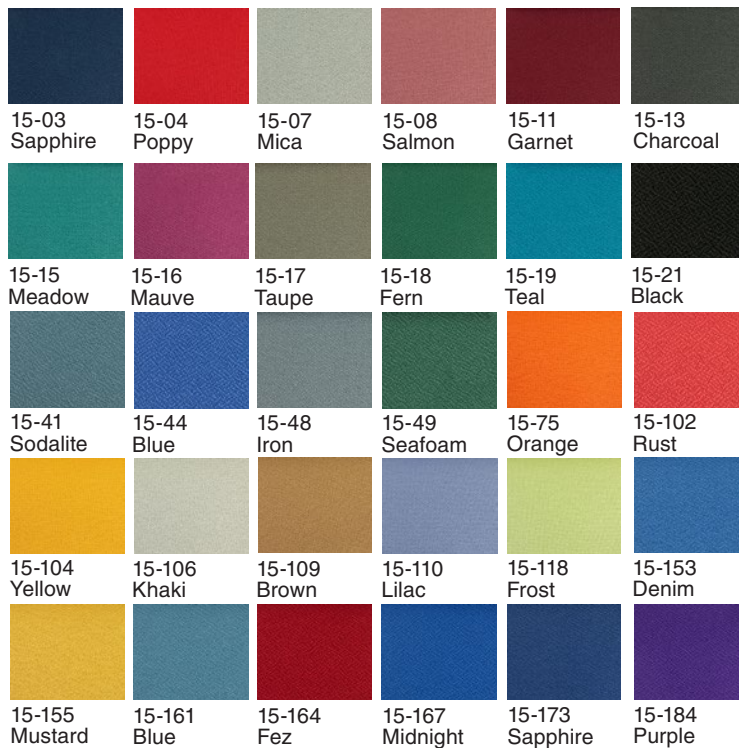


Mobile Slim Pedestal





## Pedestal Cushion Fabrics



## Mobile Pedestals

HAT's pedestals are mobile and designed to help maximize usable space at every workstation. Both the Mobile Pedestal and the Mobile Slim Pedestal slide over the feet of the HAT base. At a 10.6" width, the Mobile Slim Pedestal can also squeeze in between the "dead space" found between the legs of two adjacent table bases.



**Mobile Pedestal**  
MPEDBF-15

- Cost excludes cushion. Shown above **with** cushion.
- Dimensions:  
15" W x 22" D x 21" H
- Files letter or legal sizes
- Includes lock (key alike available)
- Locking casters
- Full front drawer pull
- Full extension drawer slides
- Heavy duty steel construction
- Pencil tray included
- Pull handle for easy moving
- Stocked in silver, black or white
- Anti-tipping counterweight included



**Mobile Slim Pedestal**  
MPEDBF-10

- Cost excludes cushion. Shown above **without** cushion.
- Dimensions:  
10.6" W x 22" D x 21" H
- Files letter or legal sizes
- Includes lock (key alike available)
- Locking casters
- Full front drawer pull
- Full extension drawer slides
- Heavy duty steel construction
- Pencil tray included
- Pull handle for easy moving
- Stocked in silver, black or white
- Anti-tipping counterweight included



**Optional Seat Cushions**

MPEDCUS-15 or  
MPEDCUS-10

- As seen here on the Mobile Pedestal
- Dimensions for Mobile Pedestal:  
15" W x 22" D x 1.5" H
- Dimensions for Mobile Slim Pedestal:  
10.6" W x 22" D x 1.5" H
- Stocked in charcoal fabric
- Easy Velcro attachment
- Other colors available:  
minimum order of 50 units with an 8-12 week lead time



Acrylic Dividers



Fabric Fold Dividers



White Board Dividers



PET EchoScape Dividers



# Fabric Dividers, White Boards and Accessories

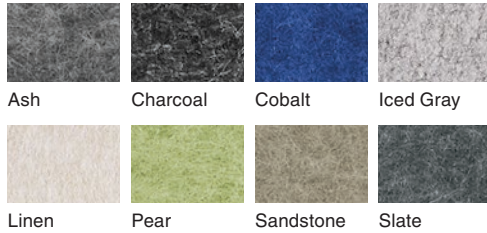
## In Stock Divider Options\*



\* Sizes limited, visit HatContract.com for more information.

## Made to Order Divider Options

### PET EchoScape



### Elements Line (Grade 1)



### Fusion Line (Grade 2)



## Dividers

- Dividers available in PET, fabric, frosted acrylic and white board
- Dividers available in a variety of dimensions for width and height
- Dividers can attach to Work Surfaces, HAT Power and Data Beams and HAT Benching
- COM is available; please review with your HAT sales representative
- Modesty Panels also available

Use HAT Dividers to create privacy and help noise absorption. Dividers can be mounted to table surfaces, HAT Power and Data Beams or HAT Benching. Choose from our standard colors or talk to us about other options that fit your project. Dividers can also be ordered that fit along the depth of the work surface to establish more separation between individual stations.

## Accessories

### Adjustable Keyboard Platform



### Power/Data Module



### Casters





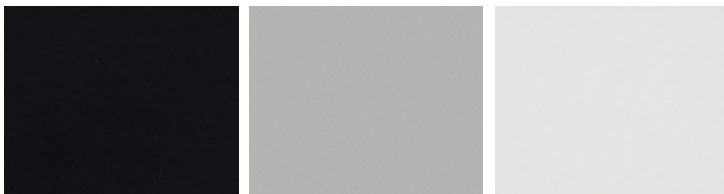
Ella



# Monitor Arms

Monitor Arms offer improved ergonomics, flexibility, and space savings for the professional user. Position your monitors exactly where you need them. Our arms feature multiple mounting options and integrated cable management to keep your desk organized and free of cable clutter.

## Monitor Arm Finishes



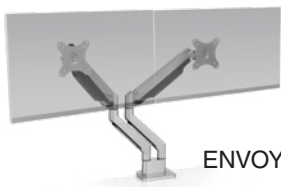
104  
Black

124  
Silver

248  
White



ENVOY-1



ENVOY-2

### Envoy

- Single or dual articulating arms
- Vertical range: 12.4"
- Horizontal range: 19.8"
- Monitor weight range: 2.2 - 19.9 lbs
- Max monitor size: 32"
- Mount clamps to desk edge or bolts thru desk
- Includes quick-release VESA adapter(s), 75mm & 100mm
- Available in silver



5900



5902

### Evo®

- Single or dual articulating arms
- Vertical range: 10.4"
- Horizontal range: 18.0"
- Monitor weight range: 1 - 15 lbs
- Max monitor size: 27"
- Features above desk mount installation for easy setup
- EVO® 5900 clamps to desk edge or grommet, bolt thru mount is sold separately
- EVO® 5902 clamps to desk edge
- Includes quick-release VESA adapter(s), 75mm & 100mm
- Available in silver, black or white



reddot award 2017  
winner



ELLA-1-CM



ELLA-2-CM

### Ella

- Single or dual articulating arms
- Vertical range: 11.4"
- Horizontal range: 18.0"
- Monitor weight range: 4 - 30 lbs
- Max monitor size: 43"
- Features above desk mount installation for easy setup
- Clamps to desk edge
- Optional customization options available to complement any workspace, contact your rep for details
- Available in silver, black or white



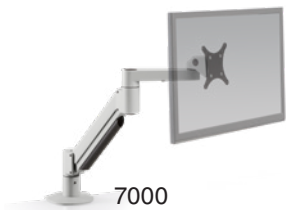
Design Award Winner

7000





Staxx™ is easy to install and reconfigure, more monitors can be added by simply adding more of the same parts.



7000



7000-8408

## 7000

- Single or dual articulating arms
- Vertical range: 16"
- Horizontal range: 24"
- Monitor weight ranges:  
2 - 13 lbs (7000-500)  
7.5 - 25 lbs (7000-800)  
12 - 31 lbs (7000-1000)
- Max monitor size: 32"
- Mount clamps to desk edge, grommet or bolts thru desk
- Includes VESA adapter(s), 75mm & 100mm
- Available in silver, black or white



STX-01S



STX-02S



STX-03S



STX-11S




STX-22S



STX-33S

## Staxx™

- Modular mounting system, supports one to six monitors
- Single tier pole length: 14"
- Monitor height can be placed anywhere along pole in 1" increments
- Mount clamps to desk edge, grommet or bolts thru desk
- Includes VESA adapter(s), 75mm & 100mm
- Optional sliders available to increase the flexibility of monitor positioning
- Available in silver, black or white



**Speed:** HAT products are ready to ship when ordered. Stocked products are shipped within 3 days.


**Efficiency:** Our “Folding HAT” design makes installation of bases quick and easy. See the HAT website.

**Reliability:** HAT’s inventory of height adjustable bases is unmatched. Whatever the project scale, HAT fills orders quickly and easily.

**Value:** HAT products are high quality yet cost-effective. HAT offers some of the best pricing in the industry.

**Stability:** HAT beams have excellent stability, unlike many other beam systems on the market.





**Meetings:** HAT now offers a height adjustable conference table base.

**Details:** HAT offers dividers, keyboard pads, monitor arms, and desktop power units.

**Flexibility:** HAT pieces are modular and easily reconfigured when floor layouts change.

**Solutions:** HAT stocks all essentials for the open office: benching, bases, beams, mobile peds and more.

# Why HAT Contract for the open office?



**Dealer-focused team:** Our management and service teams have worked at dealerships. We know the business: the deadlines, the need to make specifying and ordering easy, and all the steps that create a great project.



**Proven performance:** In under five years, HAT has become one of the largest suppliers of table bases and open office products. Our products are installed in major global corporations, including Google, LinkedIn, Verizon, REI, PayPal, Disney, Charles Schwab, SpaceX, Kaiser Permanente and many more.



**Competitive pricing:** Because HAT stocks the largest inventory of bases, we're able to offer some of the best pricing in the industry. We bring great value, enabling businesses of all sizes to improve the workplace via height-adjustability and easy access to power and data.



**Dependable inventory and stocking:** Our inventory of height adjustable bases is unmatched. Whatever the project scale, we fill orders quickly and easily.



**Timely deliveries:** HAT-stocked bases and products are ready to ship when ordered. No more long waits for bases to arrive from the factory. We offer quick shipping in three days or less on all stocked products.



**Warranty:** HAT Contract offers some of the best warranties in the business for our product sector. For bases, HAT offers a seven-year warranty on mechanical and electric elements. HAT also warrants approved labor.



**Responsive service:** HAT is known for its speed in answering and solving unforeseen dealer challenges. Our project management and customer service teams work quickly. We know issues can get worse with age, so we believe in solving early.



**Resources:** HAT can help with fast quotations and drawings. HAT is on 2020 Cap and Giza, and My Resource Library. Our website provides pricing, tutorials, user manuals, assembly instructions and more.

Meet our team and get more  
HAT Contract information at  
[hatcontract.com](http://hatcontract.com)



**HAT Contract**  
376 Martin Avenue  
Santa Clara, CA 95050  
www.hatcontract.com

408.437.8770  
888.226.7685 toll free  
408.437.8773 fax

