

Run II

ergonomic comfort you'll run away with



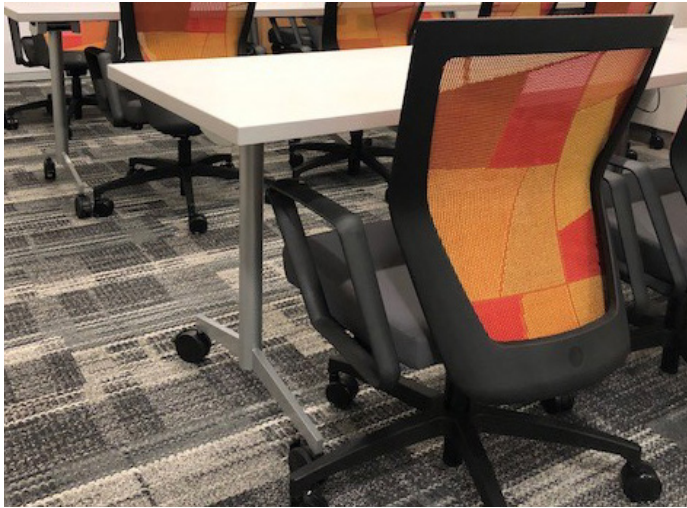

SEATING

great things happen in a chair

The ergonomic chair delivering
total body support & comfort.



Discover Run II. The smooth curve in the distinct mesh back provides integrated lumbar support. For a total office solution, pair it with its side/guest chair.





features

- Available with medium & large seats on the high & mid back models.
- Armless standard on all models.
- Optional tall & extra-tall task stools.
- Optional seat depth adjustment.
- 12 year warranty (5 years for mesh).



Design by
Studio V

Studio V creates modern, sophisticated and original seating solutions that are ergonomic, beautiful and sustainable. This team of engineers and designers

are based at the Via Seating Factory in Reno NV, where they develop products using a prototyping lab, the latest in 3D modeling software and a materials testing center.

options

arms



Basic height adjustable arm, black finish.



Basic height adjustable arm, grey finish.



Roll back arm.



8-way adjustable arm, black finish.



8-way adjustable arm, grey finish.



8-way adjustable arm, polished finish.



Fixed conference loop arm.

bases



Black nylon 5-star base.



Magnet grey nylon 5-star base.



Polished aluminum 5-star base.



Brushed aluminum 5-star.



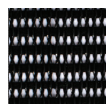
↔ Each base can pair with a stool kit/foot ring.

lumbar option

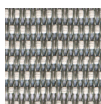


Easy adjustable lumbar support (optional) in black or white. Available on mesh & groove backs.

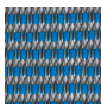
mesh colors



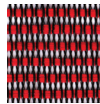
Black.



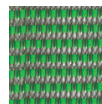
Grey.



Blue.



Red.



Green.



Blue patchwork.



Orange patchwork.

frame finishes



Black.



Magnet grey.



Please visit our website to find your local representative and browse additional options for this series.

VIASEATING.COM | 800.433.6614

© Via Seating 2020.

via
SEATING