

---

# Volo<sup>®</sup>

Frameless Wall



## FRESH OUTLOOK

---

New Frameless Glass Walls add the elegance of pure space-defining glass to Volo's versatile lineup. The sleek storefront option affords clear views and a clean, sophisticated look at a highly competitive price and industry-leading lead time.

The new panels join a full Volo array of options that let you create a workspace to meet your needs, vision, schedule — and budget.



Aluminum Framed Double Sliding Door with 72" Ladder Pull



Frameless Glass Sliding Door with 18" Post Pull



Aluminum Framed Sliding Door with 36" Post Pull



Aluminum Framed Swing Door with Lever Lock Set

## INTEGRATED SOLUTIONS

- Frameless Glass fully integrates with Volo's already expansive range of aesthetic and functional design options.
- Volo blends beautifully with Trendway's entire product offering for tailored solutions to meet your design, performance and budget needs.

## DESIGN ELEGANCE

- Imparts an upscale ambience
- Complements any architectural setting.
- Improved aesthetic with low-profile elements



Ceiling Runner

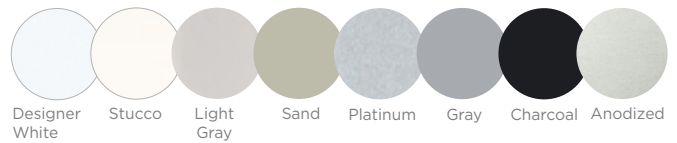


Floor Runner

## FUNCTIONAL SIMPLICITY

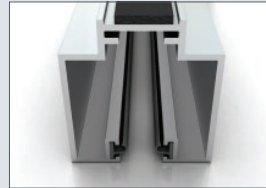
- Simple kit of parts
- Highly competitive on price and lead times
- Available in all standard finishes

### TRIM



### Volo FramelessWall's simple set of elements includes:

- Ceiling Runner
- Low-profile Floor Runner (2-part)
- Vertical Adapter
- Glass Inserts
  - Available in 1/2" (up to 10') or 3/8" (up to 9')
  - Clear, Frost, Low Iron and Clear Laminated glazing options



Ceiling Runner



Floor Runner



Vertical Adapter to connect to any Volo condition.



Vertical Adapter with foam tape (when attaching to drywall).



Wood Sliding Full Lite Door with 18" Post Pull



Wood Full Lite Swing Door with Lever Passage Set



Flush Wood Swing Door with Lever Lock Set



Please make an appointment to visit us at:  
3401 Madison Street  
Skokie, IL 60076  
[www.appliedergonomics.com](http://www.appliedergonomics.com)

Call us: (847) 679-5148  
Toll-free: (844) 859-9247  
Fax: (847) 933-0018

Email the President directly  
[jmeltzer@appliedergonomics.com](mailto:jmeltzer@appliedergonomics.com)

**Fellowes**  
Brands.



Most Trendway products conform to the ANSI/BIFMA e3-2014e level® Furniture Sustainability Standard. Visit our website to view current certifications for specific products.  
Trendway Products are tested for conformance to SCS Indoor Advantage™ or Indoor Advantage Gold™ requirements. Visit our website to view current certifications for specific products.