

Upholstery

BEEHAVE



BLACK



SLATE



CLEMENTINE



JAVA



AZURE

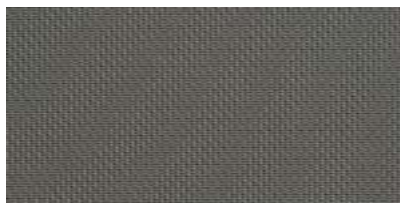


CARNELIAN

CROSS CHECK



SLATE BLACK



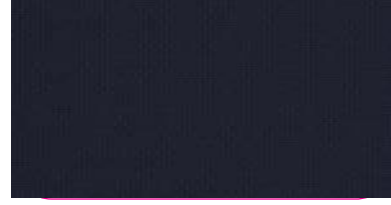
PLATINUM



VERMILLION



OTTER

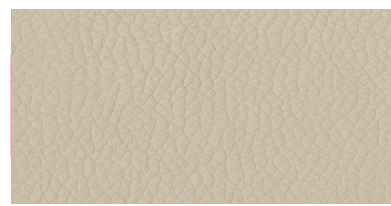


IMPERIAL

DILLON



BLACK



STRATUS



SAGE



JAVA



OCEAN



LIPSTICK



ANGORA



FOSSIL



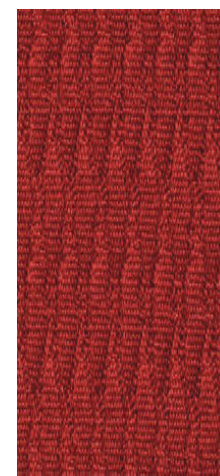
GOOSE



CORDOVAN



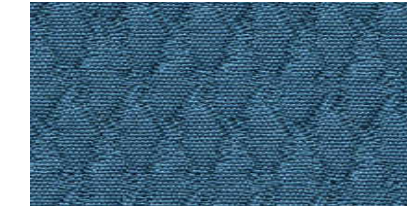
BAY BLUE



FLARE



VERDANT



WATERFALL

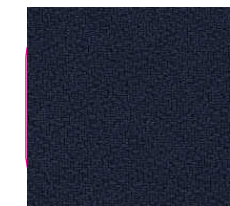
FOUNDATION



MERCURY



EBONY



NAVY

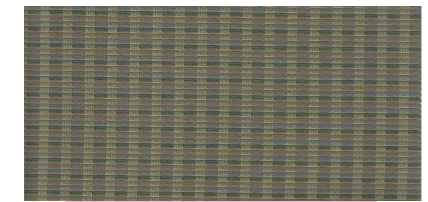


COFFEE BEAN

MAINFRAME

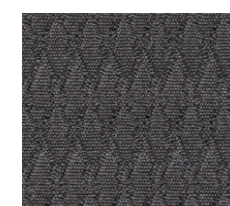


TRUFFLE

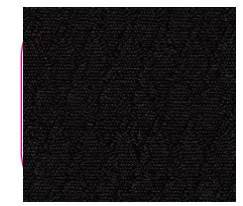


PEBBLE

MOGULS



GRAPHITE



ONYX



NAVY



JAVA

TECHNICAL INFORMATION

Pattern 54"	Content & Backing	Weight/ Linear Yd	Pattern Repeat	Finish	Abrasion Wyzenbeek	Light Fastness	Flammability
BEEHAVE* Directional Supplier: Guilford of Maine	65% Pre-Con. Rec. Polyester 35% Post-Con. Rec. Polyester No Backing	12.1 oz.	.75" H 1.1" V	BLOCKaide®	75,000 Double Rubs	40 Hours	Cal. 117-E NFPA 260 (Equiv. to UFAC)
CROSS CHECK Supplier: Mayer Fabrics	100% Polyester Acrylic Backing	10.94 oz.	Non-Matching	None	258,000 Double Rubs	60 Hours	Cal. 117-E NFPA 260 (Equiv. to UFAC)
DILLON Directional Supplier: Culp	100% Polyurethane Backing 70% Polyester, 30% Cotton	20.32 oz.	None	Antimicrobial Silver based ion technology	200,000 Double Rubs	100 Hours	Cal. 117-E NFPA 260 (Equiv. to UFAC)
FOUNDATION* Directional Supplier: Guilford of Maine	65% Pre-Con. Rec. Polyester 35% Post-Con. Rec. Polyester No Backing	13.1 oz.	None	None	250,000 Double Rubs	40 Hours	Cal. 117-E NFPA 260 (Equiv. to UFAC)
MAINFRAME Directional Supplier: Tahoe, LLC	52% Polyolefin 48% Polyester Acrylic Backing	12 oz.	.75" H .5" V	Teflon®	100,000 Double Rubs	40 Hours	Cal. 117-E NFPA 260 (Equiv. to UFAC)
MOGULS* Directional Supplier: Guilford of Maine	65% Pre-Con. Rec. Polyester 35% Post-Con. Rec. Polyester No Backing	13.4 oz.	.26" H .8" V	None	100,000 Double Rubs	40 Hours	Cal. 117-E NFPA 260 (Equiv. to UFAC)

CLEANING INFORMATION

The cleaning code for all products on this card is WS. Prompt cleaning is always recommended.

WS: Water/Solvent Cleaner – Spot clean with a mild solvent, an upholstery shampoo, or the foam from a mild detergent. When using a solvent or dry cleaning product, follow instructions carefully and clean only in a well-ventilated room. Avoid any product that contains carbon tetrachloride or other toxic materials. With either method, pretest a small area before proceeding.

For detailed specifications, care and cleaning information for each pattern, please contact our supplier.

ADDITIONAL INFORMATION

Memo Samples: Individual memo samples can be ordered.

Color Matching: RFM always attempts to ship a satisfactory commercial match. Because of industry standard dye lot variation, colors may not match exactly.

Specifications: Specifications are correct at the time of printing. Current specifications are available on our website.

For information or assistance with products or services, call us at 800.447.5542 or refer to our web site, www.rfmseating.com.

SUPPLIER CONTACT INFORMATION

Culp Upholstery Fabrics:
1823 Eastchester Drive
High Point, NC 27265
Tel: 336.889.5161
www.culp.com

Guilford of Maine:
5001 Kendrick St. SE,
Suite B
Grand Rapids, MI 49512
Tel: 800.544.0200
Fax: 616.554.2255
www.guilfordofmaine.com

Mayer Fabrics:
321 S. Alabama St., Indianapolis, IN 46204
PO Box 1812, Indianapolis, IN 46206
Tel: 317.267.2626 or 800.428.4415
Fax: 317.267.2629 or 877.7SAMPLE
www.mayerfabrics.com

Tahoe, LLC:
PO Box 15, Grover, NC 28073
404 Elm Road, Blacksburg, SC 29702
Tel: 704.476.0120 or 877.884.8246
Fax: 864.936.3228
www.tahoellc.com

* Terratex is a registered trademark of Duvaltex and designates fabrics that are made from 100% recycled or compostable material using increasingly sustainable manufacturing practices to produce a high quality product that is recyclable at the end of its useful life.



Please refer to the RFM pricing guide for product information, specifications, warranties and options.