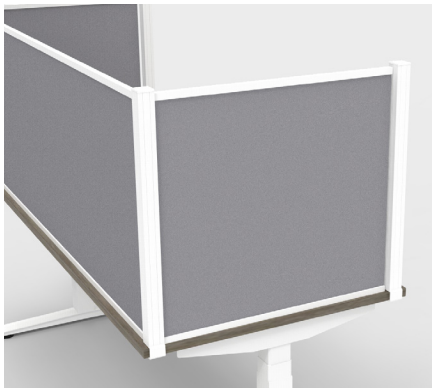


# SCENE SHIELD FRAMED DESK DIVIDER

---



---

## MODERN DESIGN

A modern take on divisional solutions using Tayco's signature Scene posts, and can be retrofitted to any current setup. Adaptable for fixed desks, adjustable height desks, and benching. Non-marring clamp-on or bolted posts with fully framed dividers.

## FASTENERS

The screens are simply attached with a clamp, avoiding any damage to the surface, or can be permanently fastened with screws.

## LAMINATES

22 laminate options

## FRAME FINISHES

Silver, white, or black.

## IDEAL DIVISION

Available as a single screen, "U" shape, and individual parts, users can create a customized set-up for existing benching configurations. The Scene Shield also comes in full length or with a 2" gap between the surface and screen to allow for the easy pass-through of items between neighbors.

## EXTENDED SCREENS

For extra protection, the Scene Shield also offers screens that extend past the worksurface.

## SIZES

24" -72" W x 24"H